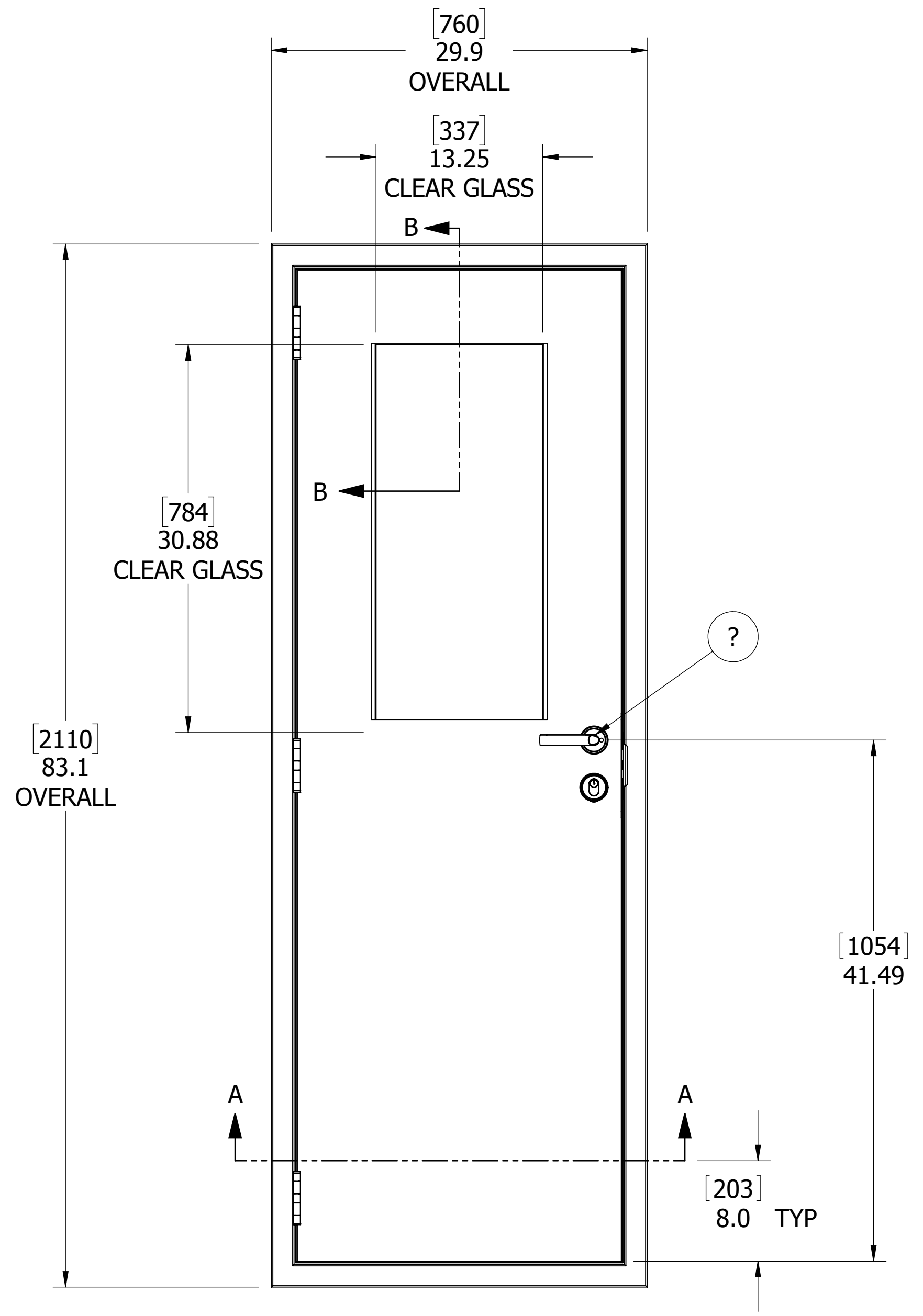


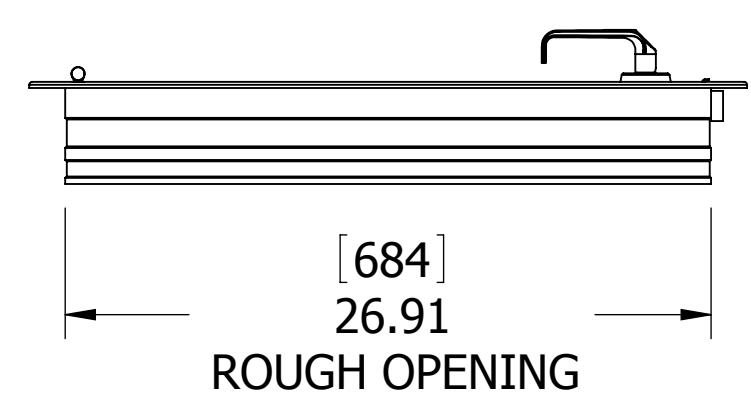
D

C

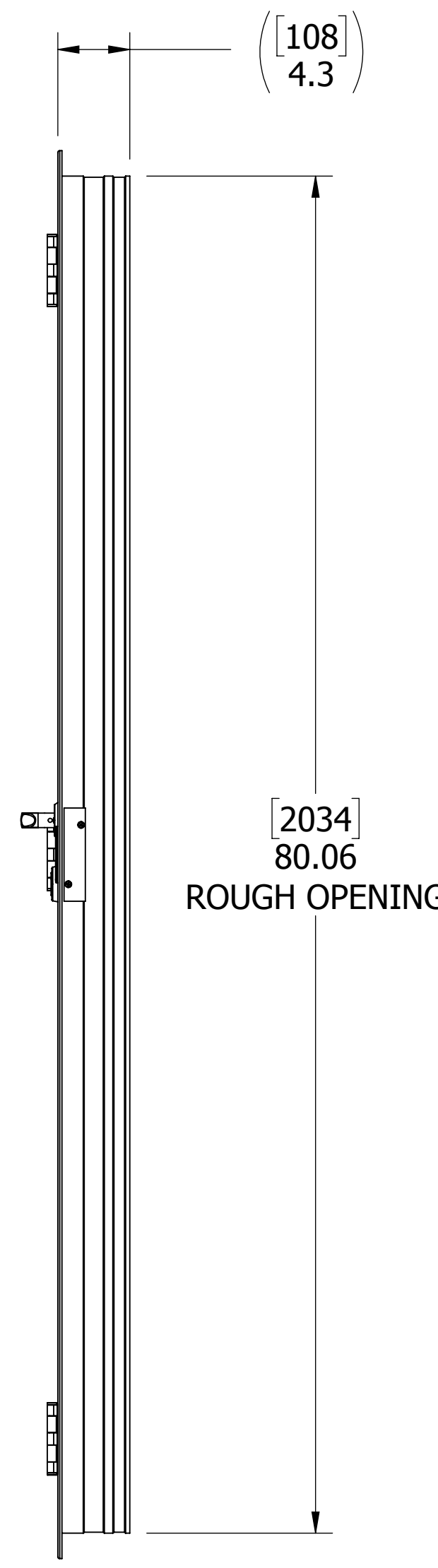
B



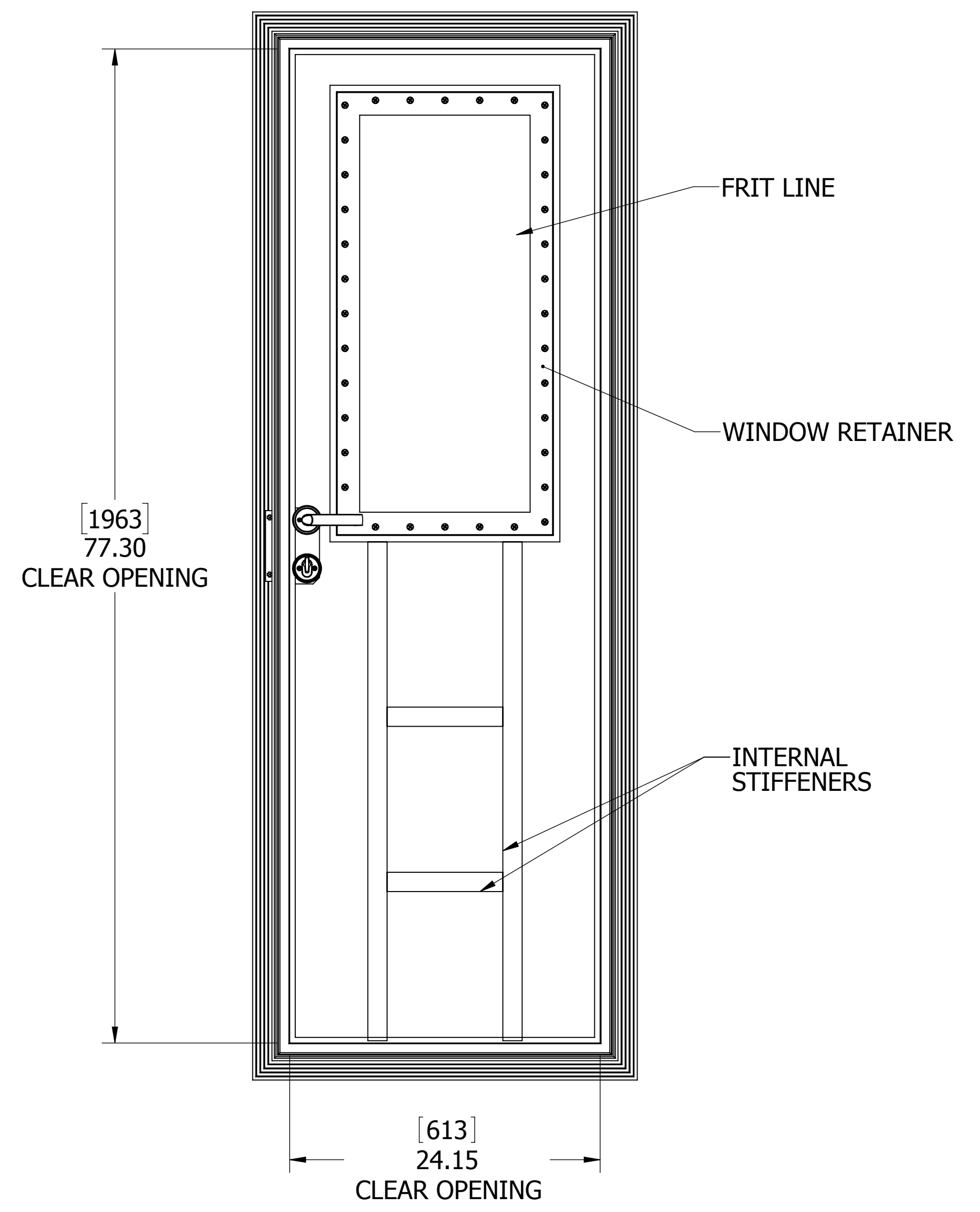
EXTERIOR VIEW



ROUGH OPENING



**KEY PLAN
OUTWARD OPENING
LEFT HAND**



**INTERIOR VIEW
INTERIOR SKIN REMOVED
TO SHOW STIFFENERS**

- 7. THIS DRAWING PROVIDES THE GENERAL CONFIGURATION OF A DOOR FOR MORE DETAILED INFORMATION, CONTACT FREEMAN MARINE SALES.
- 6. RADIUS CORNER PANEL.
- 5. WEATHERTIGHT CONSTRUCTION.
- 4. PANEL SKIN THICKNESS AS DESCRIBED IN CONFIGURATION DETAIL.
- 3. DOOR SIZE/STYLE AS REQUIRED.
- 2. OUTWARD OPENING, LEFT HAND, PER FREEMAN STANDARD.
- 1. FINISH, PANEL - AS SPECIFIED PER SALES ORDER SPECIFICATION SHEET.
FINISH, COAMING - AS SPECIFIED PER SALES ORDER SPECIFICATION SHEET.

NOTES: UNLESS OTHERWISE SPECIFIED.

A

<p>CUSTOMER APPROVAL</p> <p>Signature: _____</p> <p>Date: _____</p> <p><small>IMPORTANT! THIS DRAWING SUPERSEDES ALL OTHER DOCUMENTS. By signing this approval you accept and agree that the dimensions and details shown are correct and properly fit your application, regardless of any differences between this drawing and any contract specifications. Should you see any errors in the drawing, or have any questions, please contact your Freeman Marine sales engineer for clarification.</small></p>		<p>SPECIFICATIONS SUBJECT TO CHANGE WITHOUT NOTICE.</p> <p>PROJECTION </p> <p>UNLESS OTHERWISE SPECIFIED DIMENSIONS ARE IN INCHES, TOLERANCES FOR ROUGH AND CLEAR OPENING ± .125 INCH. ALL OTHERS ARE:</p> <table style="margin: auto;"> <tr> <td>.X</td> <td>.XX</td> <td>.XXX</td> <td>ANGLES</td> </tr> <tr> <td>±.1</td> <td>±.03</td> <td>±.010</td> <td>±2°</td> </tr> </table> <p>DO NOT SCALE DRAWING</p>	.X	.XX	.XXX	ANGLES	±.1	±.03	±.010	±2°	<p>FREEMAN MARINE EQUIPMENT, INC.</p> <p>28336 HUNTER CREEK ROAD GOLD BEACH, OR 97444 U.S.A. PHONE: 541-247-7078 FAX: 541-247-2114 www.freemanmarine.com</p>
.X	.XX	.XXX	ANGLES								
±.1	±.03	±.010	±2°								
<p>CLIENT: FREEMAN MARINE</p> <p>TITLE: MODEL 1122-0-1002-1004-08-1 OUTWARD OPENING LEFT HAND</p>		<p>SIZE: D CAGE CODE: 64747 DRAWING NUMBER: 1122-0-1002-1004-08-1-LH REV. -</p> <p>SCALE: 1:8 CALC. WT. ACT. WT. SHEET 1 OF 2</p>									
<p>DRAWN: R. REESE DATE: 05SEP12</p> <p>CHECKED: DATE: _____</p> <p>ENGR: DATE: _____</p> <p>DESIGN ACTIVITY: DATE: _____</p> <p>CONTRACT NO.:</p>		<p>CONFIDENTIAL PROPERTY OF FREEMAN MARINE EQUIPMENT, INC. UNAUTHORIZED USE, REPRODUCTION OR DISTRIBUTION IS STRICTLY PROHIBITED. ALL RIGHTS RESERVED 2012, FREEMAN MARINE EQUIPMENT, INC.</p>									

8 7 6 5 4 3 2 1

CONTINUOUS ADHESIVE BOND PANEL FRAME AND WINDOW FRAME TO INTERIOR PANEL PLATE USING PLEXIS MA830 (Grey Methacrylate Adhesive)

CONTINUOUS ADHESIVE BOND INTERNAL STIFFENERS TO INTERIOR PANEL PLATE USING PLEXIS MA830 (Grey Methacrylate Adhesive)

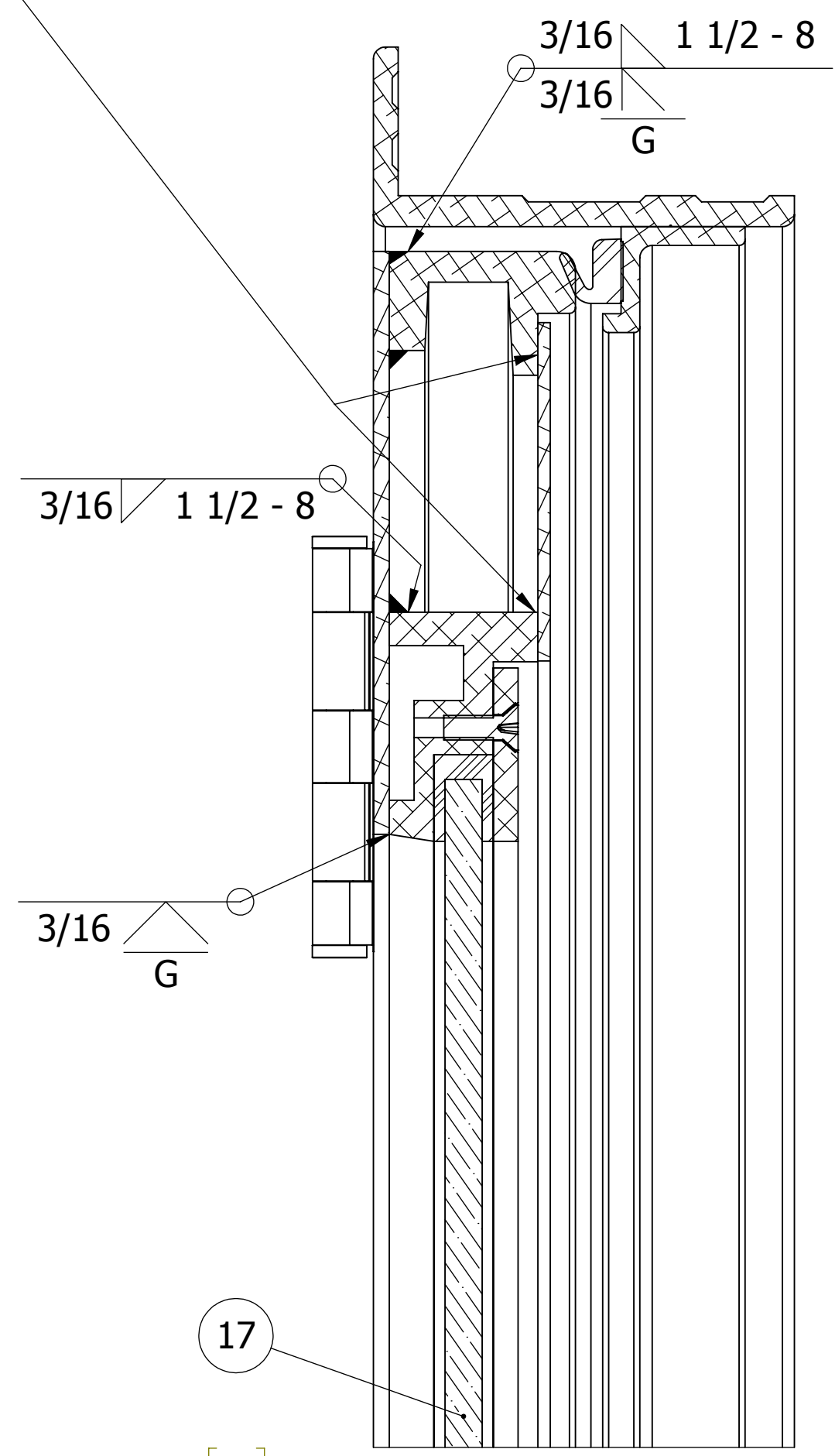
MOUNTING OPTIONS (BLOCK/PIPE)

D

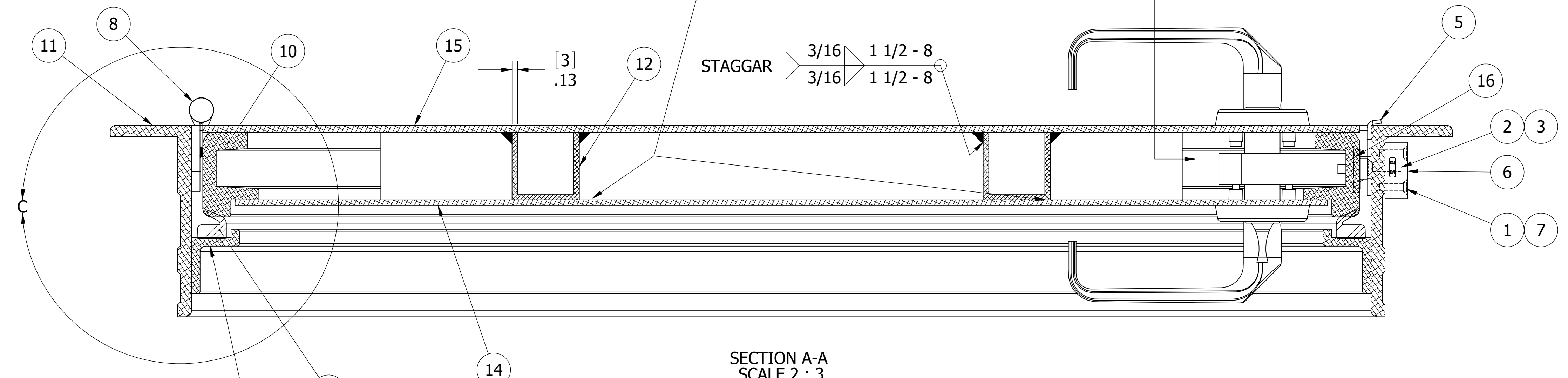
C

B

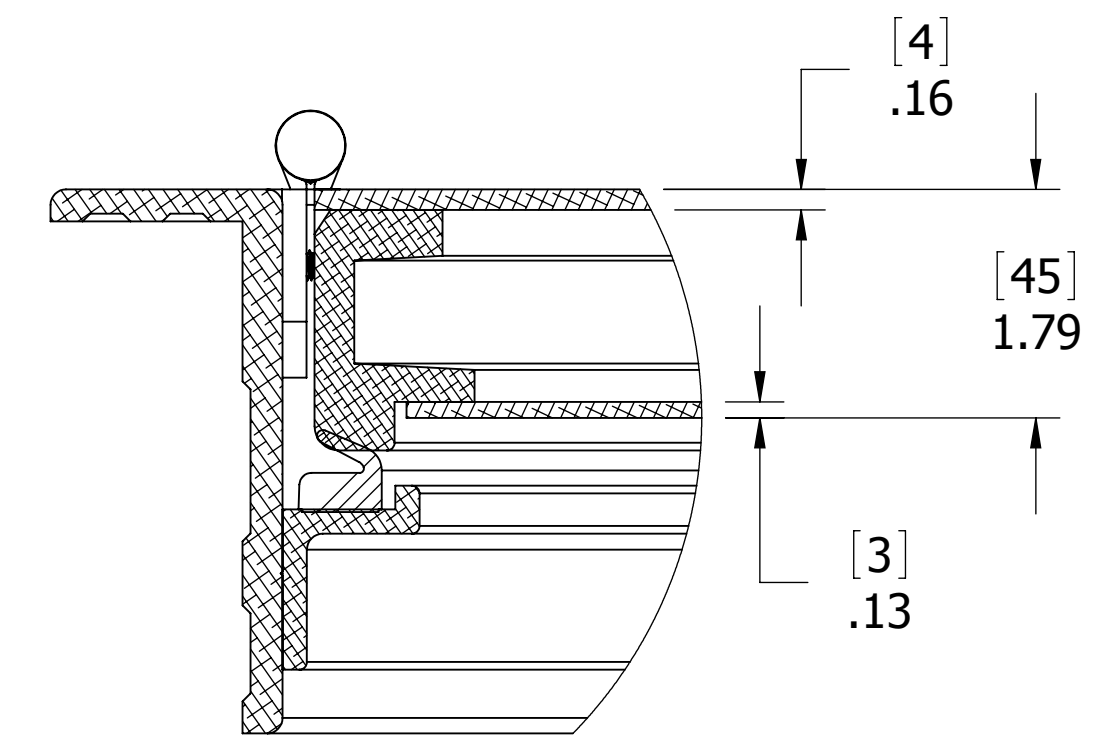
A



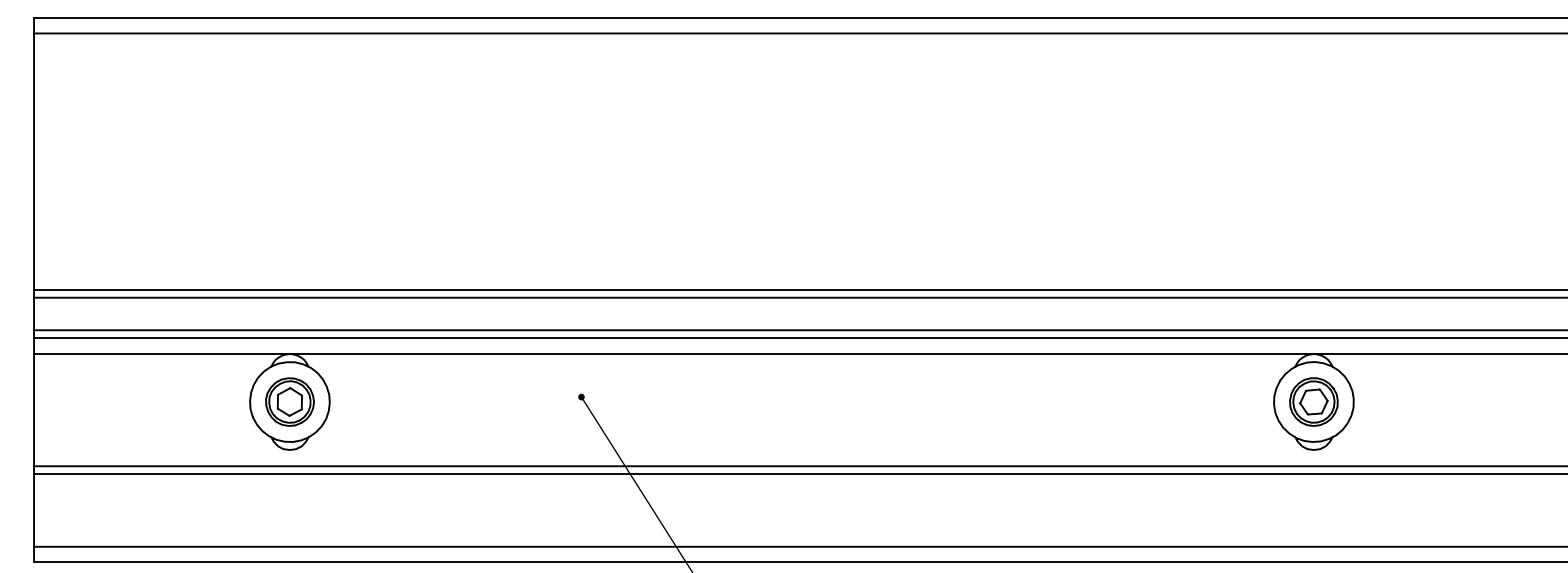
SECTION B-B SCALE 2 : 3



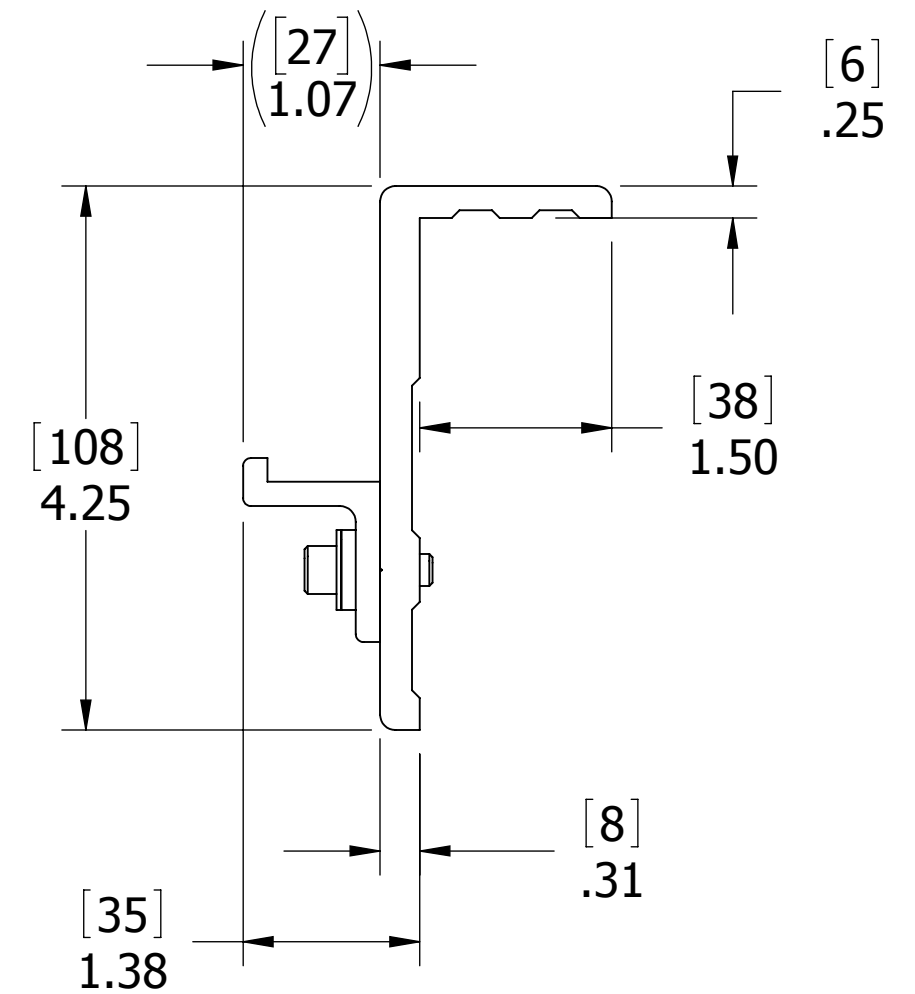
SECTION A-A SCALE 2 : 3



DETAIL C SCALE 2 : 3



ADJUSTABLE STOP



ITEM NO.	QTY.	PART NUMBER	DESCRIPTION	MATERIAL
17	1	5190-1004-08-1	WINDOW 30.88" X 13.25", 3/8" GRAY TEMPERED	REF. S/A - B.O.M.
16	1	0722-2034	BOOT, ACETRON, FOR LOCKCASE, TRIOVING	ACETRON GP
15	1	0711-2098	PLATE, PANEL - OUTSIDE	ALUMINUM, 5052-H32
14	1	0711-2095	PLATE, PANEL - INSIDE	ALUMINUM, 5052-H32
13	1	0631-9905	GASKET	NEOPRENE
12	1	0611-9508	STIFFENER, CHANNEL	ALUMINUM, 6063-T52
11	1	0611-9082	COAMING	ALUMINUM, 6061-T4/T451
10	1	0611-9080	FRAME, PANEL	ALUMINUM, 6061-T4/T451
9	1	0611-9034	STOP, ADJUSTABLE	ALUMINUM, 6061-T4/T451
8	3	0461-2199	HINGE, BUTT SLOT 3.5 X 4.0	STAINLESS STEEL
7	2	0441-2137	ISOLATOR, 8-32 FLH SCREW	ACETRON GP
6	1	0435-2109	COVER, STRIKER, ADJUSTABLE	ALUMINUM, 6061-T4
5	1	0422-2322	STRIKER PLATE, DOOR LEFT,	316 S/S, 1.690
4	1	0422-1012	LOCKSET, TRIOVING LHR	REF. SA. - B.O.M.
3	2	0411-2967	10-24 REGULAR HEX NUT	316L STAINLESS STEEL
2	2	0411-2216	SCREW, PHILLIPS FHM, 10-24 X 3/4	316L STAINLESS STEEL
1	2	0411-2215	SCREW FHM P 8-32 X .625IN SS	SS 316/316L

NOTES: UNLESS OTHERWISE SPECIFIED.

CUSTOMER APPROVAL

Signature: _____
Date: _____
IMPORTANT! THIS DRAWING SUPERSEDES ALL OTHER DOCUMENTS. By signing this approval you accept and agree that the dimensions and details shown are correct and properly fit your application, regardless of any differences between this drawing and any contract specifications. Should you see any errors in the drawing, or have any questions, please contact your Freeman Marine sales engineer for clarification.

REV.	DESCRIPTION	DATE	DRAWN
-	INITIAL RELEASE	05SEP12	RR

SPECIFICATIONS SUBJECT TO CHANGE WITHOUT NOTICE.
PROJECTION
UNLESS OTHERWISE SPECIFIED DIMENSIONS ARE IN INCHES, TOLERANCES FOR ROUGH AND CLEAR OPENING ± .125 INCH. ALL OTHERS ARE:
.X .XX .XXX ANGLES
±.1 ±.03 ±.010 ±2°
DO NOT SCALE DRAWING

FREEMAN MARINE EQUIPMENT, INC.
28336 HUNTER CREEK ROAD
GOLD BEACH, OR 97444 U.S.A.
PHONE: 541-247-7078 FAX: 541-247-2114
www.freemanmarine.com

CLIENT: FREEMAN MARINE
TITLE: MODEL 1122-0-1002-1004-08-1
OUTWARD OPENING LEFT HAND

SIZE: D CAGE CODE: 64747 DRAWING NUMBER: 1122-0-1002-1004-08-1-LH REV. -
SCALE: 1:8 CALC. WT. ACT. WT. SHEET 2 OF 2