

REVISIONS

| REV. | DESCRIPTION | BY | DATE |
|------|--------------------|-----|---------|
| A | PRODUCTION RELEASE | ZJC | 21SEP16 |
| | | | |
| | | | |

GENERAL NOTES

1. REMOVE ALL BURRS AND BREAK SHARP EDGES AND CORNERS 1.0mm [.04"] MAX.
2. WELD IN INSTALLATION
3. WATERTIGHT CONSTRUCTION TO MEET SEALING STD II
4. APPROX WEIGHT: 270.53kg
5. finish: B - COMMERCIAL QUALITY

WO#

CUSTOMER APPROVAL

IMPORTANT! THIS DRAWING SUPERSEDES ALL OTHER DOCUMENTS. By signing this approval you accept and agree that the dimensions and details shown are correct and properly fit your application, regardless of any differences between this drawing and any prior contract specifications. Should you have any questions or see any errors, DO NOT SIGN THIS APPROVAL until the drawing is corrected.

SIGN _____ DATE _____

UNLESS OTHERWISE SPECIFIED, DIMENSIONS ARE IN MILLIMETERS. TOLERANCES FOR ROUGH AND CLEAR OPENINGS ARE ±3mm (.125"). ALL OTHERS ARE:

| METRIC | X | .X | .XX | ANGLES |
|----------|------|------|-------|--------|
| | ±2.5 | ±.8 | ±.25 | ±2° |
| IMPERIAL | .X | .XX | .XXX | ANGLES |
| | ±.1 | ±.03 | ±.010 | ±2° |

| | |
|----------|-----------|
| BAR CODE | CAGE CODE |
| | 64747 |



COPYRIGHT 20142015 ADVANTEC GLOBAL INNOVATIONS. ALL RIGHTS RESERVED. CONFIDENTIAL PROPERTY OF ADVANTEC GLOBAL INNOVATIONS. UNAUTHORIZED USE, REPRODUCTION OR DISTRIBUTION IS STRICTLY PROHIBITED. COPIES REMAIN THE PROPERTY OF ADVANTEC GLOBAL INNOVATIONS AND MUST BE RETURNED UPON REQUEST.

CLIENT **FME**

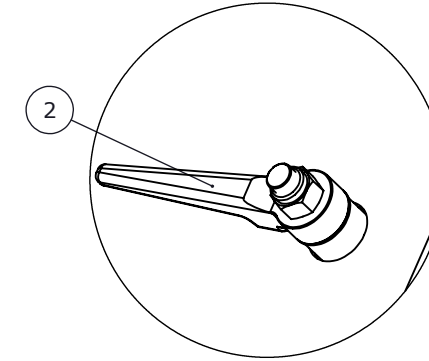
PROJECT TITLE

DWG TITLE **WATERTIGHT BULKHEAD DOOR** QTY

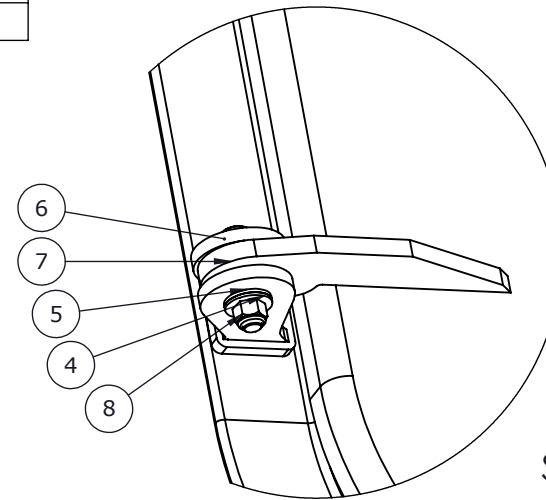
| SCALE | DRAWN | DATE | CHECKED | DATE | SIZE |
|-------|-------|-----------|---------|-----------|------|
| 1:10 | ZJC | 21-Sep-16 | DJM | 21-Sep-16 | B |

| S.O. NO | DWG NO | SHEET | REV |
|---------|------------|--------|-----|
| | 1212-2860L | 1 of 3 | A |

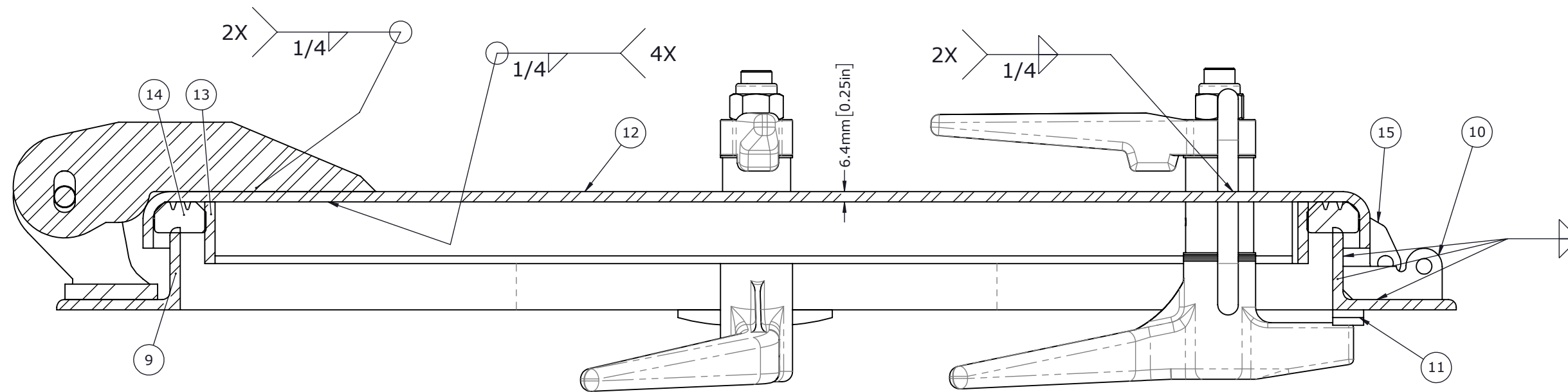
| ITEM | QTY | PART No. | DESCRIPTION | MATERIAL |
|------|-----|------------------|---|--|
| 1 | 1 | 0223-1002 | DOG ASSY, INDIVIDUAL, CENTEX, STEEL,RH | STEEL |
| 2 | 3 | 0223-1003 | DOG ASSY, INDIVIDUAL, CENTEX, STEEL, LH | STEEL |
| 3 | 3 | 0411-2029 | SCREW, HH .5-13X2.5IN | STAINLESS STEEL, 316 |
| 4 | 6 | 0411-2693 | WASHER, FLAT | 316/316L STAINLESS STEEL |
| 5 | 12 | 0413-2111 | WASHER | Nylon 6/10 |
| 6 | 3 | 0462-2637 | HINGE BASE | STAINLESS STEEL |
| 7 | 3 | 0462-2574 | BLADE, HINGE | PLATE, STL .50IN A36 (0715-2028) |
| 8 | 3 | 0411-2027 | NUT .50IN-13 SS 316 NYLOCK | SS 316/316L |
| 9 | 1 | 1212-2860L-101 | MAIN FRAME | ANGLE, STL A36 HR 3X2X.313IN (0615-9534) |
| 10 | 1 | P0004801-001-102 | PADLOCK HASP | PLATE, STL .188IN A36 (0715-2033) |
| 11 | 4 | 1212-2860L-103 | QUICK ACTING DOG WEDGE | BAR, STL A36 HR .375X1IN (0615-9581) |
| 12 | 1 | 1212-2860L-201 | SKIN, EXTERIOR | .25IN THK A36 GRY STL (0715-2027) |
| 13 | 1 | 1212-2860L-202 | GASKET RETAINER/STIFFENER | .25X1.5IN., A36 (0615-9598) |
| 14 | 1 | 1212-2860L-203 | GASKET | 25 DURO NEOPRENE (0631-9854) |
| 15 | 1 | 1212-2860L-207 | PADLOCK HASP | PLATE, STL .188IN A36 (0715-2033) |
| 16 | 3 | 1212-2860L-208 | STIFFENER | .25X1.0IN., A36 (0715-9598) |
| 17 | 2 | 1212-2860L-204 | PULL HANDLE | BAR, STL A36 .5IN DIA ROUND (0615-9600) |



DETAIL I
SCALE 1 : 5



DETAIL J
SCALE 1 : 5



SECTION B-B
SCALE 1 : 3

REVISIONS

SEE SHEET 1

GENERAL NOTES

SEE SHEET 1

WO#

CUSTOMER APPROVAL

IMPORTANT! THIS DRAWING SUPERSEDES ALL OTHER DOCUMENTS. By signing this approval you accept and agree that the dimensions and details shown are correct and properly fit your application, regardless of any differences between this drawing and any prior contract specifications. Should you have any questions or see any errors, DO NOT SIGN THIS APPROVAL until the drawing is corrected.

SIGN _____ DATE _____

UNLESS OTHERWISE SPECIFIED, DIMENSIONS ARE IN MILLIMETERS. TOLERANCES FOR ROUGH AND CLEAR OPENINGS ARE ±3mm (.125"). ALL OTHERS ARE:

| METRIC | X | .X | .XX | ANGLES |
|----------|------|------|-------|--------|
| | ±2.5 | ±.8 | ±.25 | ±2° |
| IMPERIAL | .X | .XX | .XXX | ANGLES |
| | ±.1 | ±.03 | ±.010 | ±2° |

| | |
|----------|-----------|
| BAR CODE | CAGE CODE |
| | 64747 |



COPYRIGHT 2014/2015 ADVANTEC GLOBAL INNOVATIONS. ALL RIGHTS RESERVED. CONFIDENTIAL PROPERTY OF ADVANTEC GLOBAL INNOVATIONS. UNAUTHORIZED USE, REPRODUCTION OR DISTRIBUTION IS STRICTLY PROHIBITED. COPIES REMAIN THE PROPERTY OF ADVANTEC GLOBAL INNOVATIONS AND MUST BE RETURNED UPON REQUEST.

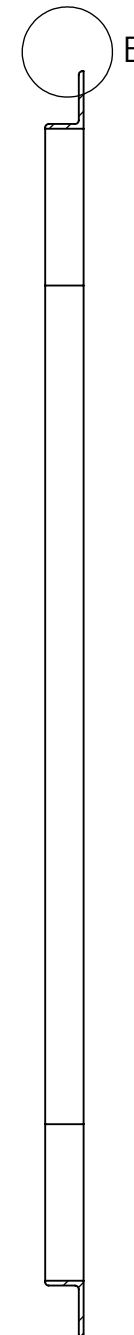
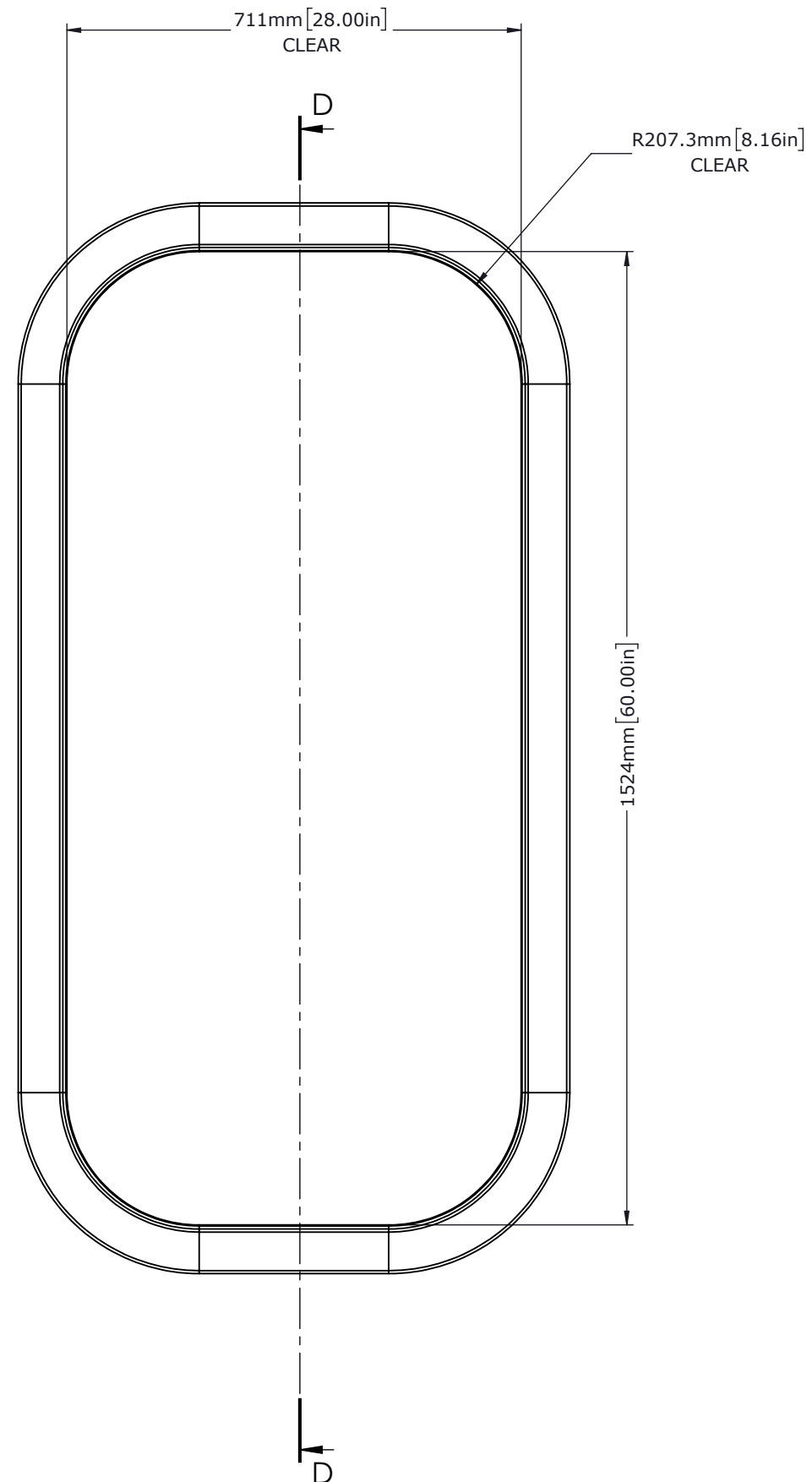
CLIENT: FME

PROJECT TITLE:

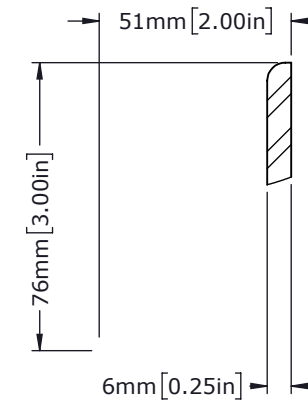
DWG TITLE: WATERTIGHT BULKHEAD DOOR QTY: B

| SCALE | DRAWN | DATE | CHECKED | DATE | SIZE |
|-------|-------|-----------|---------|-----------|------|
| 1:10 | ZJC | 21-Sep-16 | DJM | 21-Sep-16 | B |

| S.O. NO | DWG NO | SHEET | REV |
|---------|------------|--------|-----|
| | 1212-2860L | 2 of 3 | A |



SECTION D-D



DETAIL E
SCALE 1 : 2

REVISIONS

GENERAL NOTES

1. REMOVE ALL BURRS AND BREAK SHARP EDGES AND CORNERS 1.0mm [.04"] MAX.
2. finish: B - COMMERCIAL QUALITY
3. MATERIAL: 2X3X.312 A36 MS

WO#

CUSTOMER APPROVAL

IMPORTANT! THIS DRAWING SUPERSEDES ALL OTHER DOCUMENTS. By signing this approval you accept and agree that the dimensions and details shown are correct and properly fit your application, regardless of any differences between this drawing and any prior contract specifications. Should you have any questions or see any errors, DO NOT SIGN THIS APPROVAL until the drawing is corrected.

SIGN

DATE

UNLESS OTHERWISE SPECIFIED, DIMENSIONS ARE IN MILLIMETERS. TOLERANCES FOR ROUGH AND CLEAR OPENINGS ARE $\pm 3\text{mm}$ (.125"). ALL OTHERS ARE:

| | | | | |
|----------|-----------|-----------|------------|---------------|
| METRIC | X | .X | .XX | ANGLES |
| | ± 2.5 | $\pm .8$ | $\pm .25$ | $\pm 2^\circ$ |
| IMPERIAL | .X | .XX | .XXX | ANGLES |
| | $\pm .1$ | $\pm .03$ | $\pm .010$ | $\pm 2^\circ$ |

BAR CODE

CAGE CODE

64747



COPYRIGHT 2014/2015 ADVANTEC GLOBAL INNOVATIONS. ALL RIGHTS RESERVED. CONFIDENTIAL PROPERTY OF ADVANTEC GLOBAL INNOVATIONS. UNAUTHORIZED USE, REPRODUCTION OR DISTRIBUTION IS STRICTLY PROHIBITED. COPIES REMAIN THE PROPERTY OF ADVANTEC GLOBAL INNOVATIONS AND MUST BE RETURNED UPON REQUEST.

CLIENT

FME

PROJECT TITLE

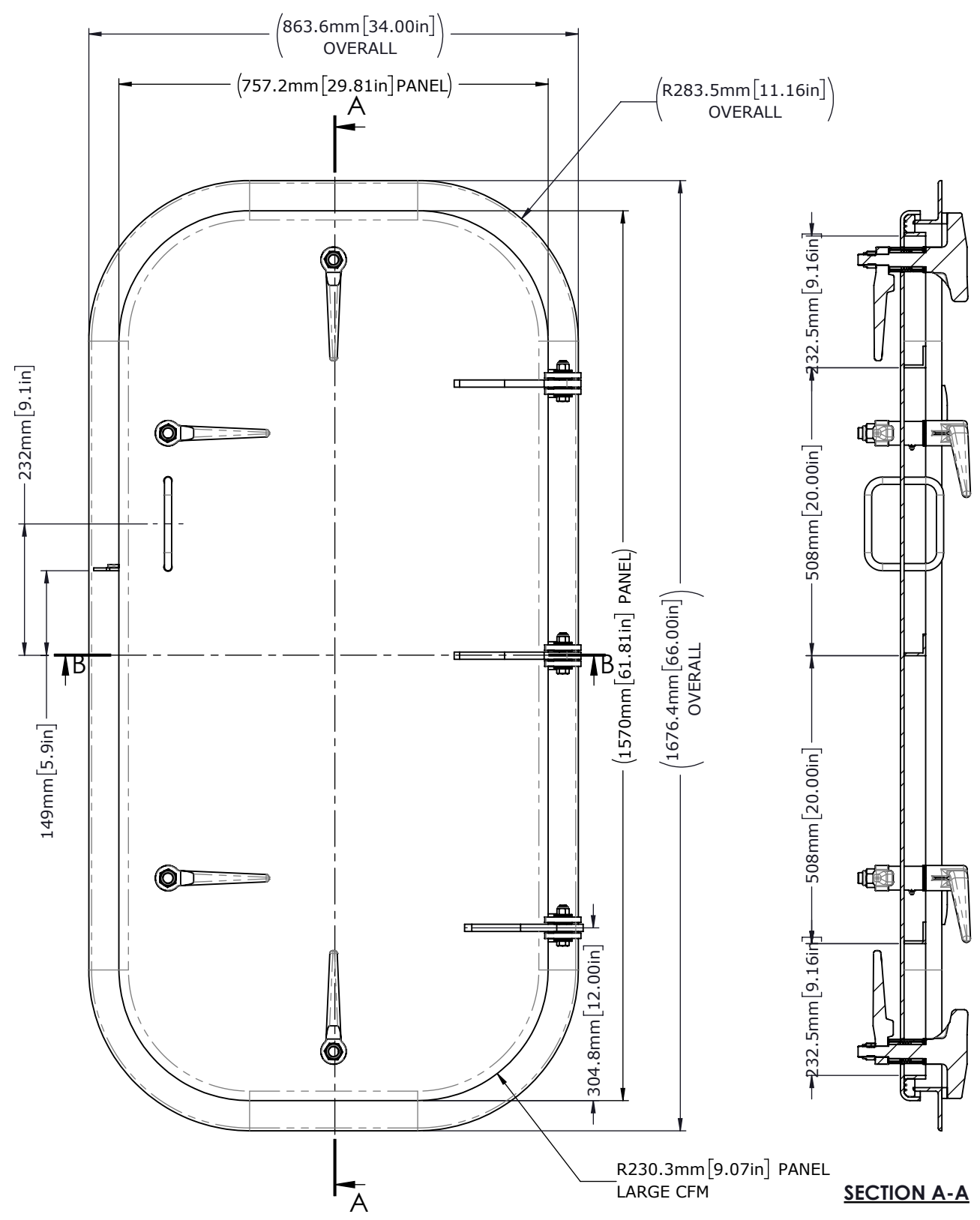
DWG TITLE

MAIN FRAME

QTY

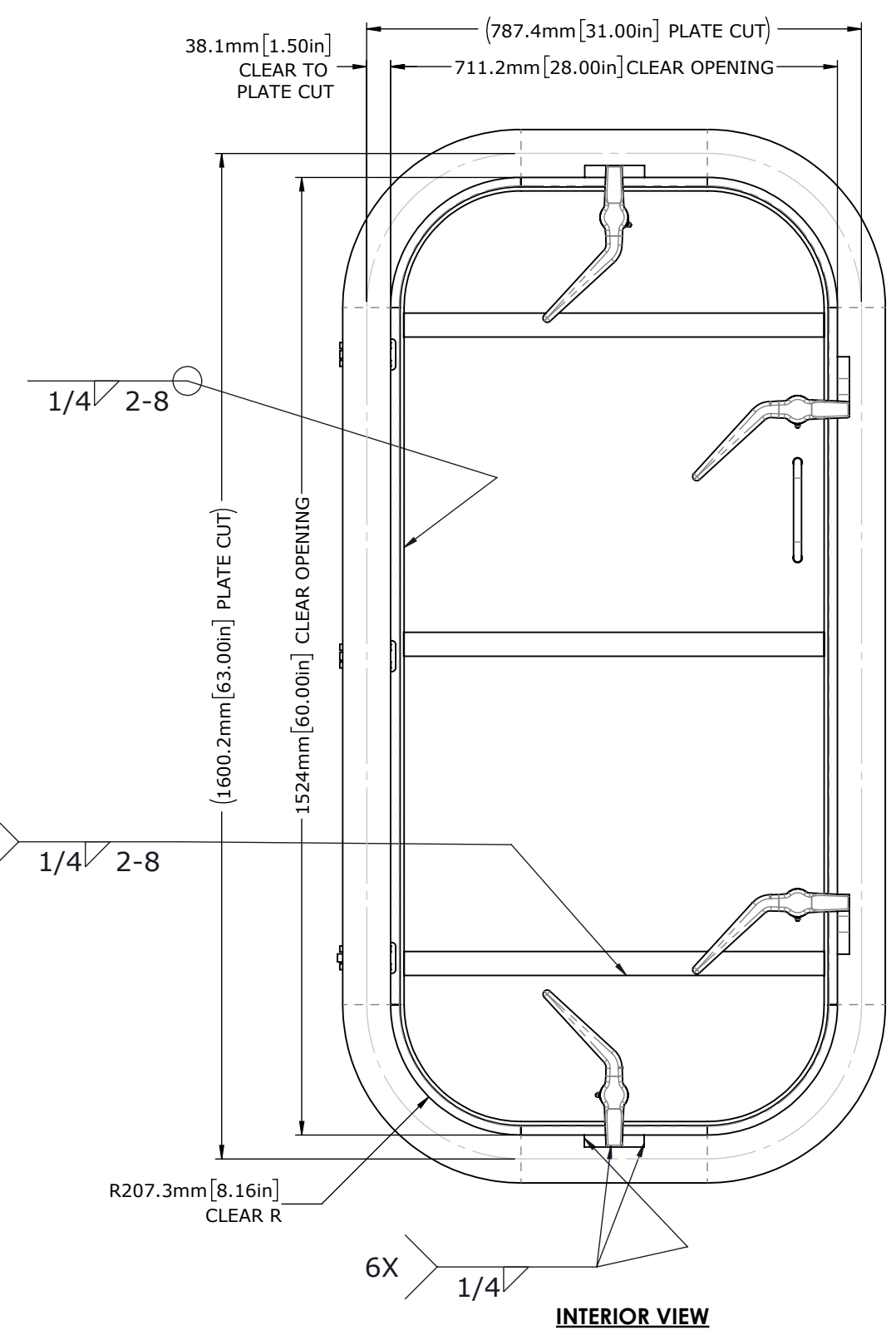
| | | | | | |
|-------|-------|-----------|---------|-----------|------|
| SCALE | DRAWN | DATE | CHECKED | DATE | SIZE |
| 1:10 | ZJC | 21-Sep-16 | DJM | 21-Sep-16 | B |

| | | | |
|---------|----------------|--------|-----|
| S.O. NO | DWG NO | SHEET | REV |
| | 1212-2860L-101 | 3 of 3 | A |



EXTERIOR VIEW

SECTION A-A



INTERIOR VIEW

REVISIONS

| REV. | DESCRIPTION | BY | DATE |
|------|--------------------|-----|---------|
| A | PRODUCTION RELEASE | ZJC | 22SEP16 |
| | | | |
| | | | |

GENERAL NOTES

1. REMOVE ALL BURRS AND BREAK SHARP EDGES AND CORNERS 1.0mm [.04"] MAX.
2. WELD IN INSTALLATION
3. WATERTIGHT CONSTRUCTION TO MEET SEALING STD II
4. APPROX WEIGHT: 270.62kg
5. finish: B - COMMERCIAL QUALITY

WO#

CUSTOMER APPROVAL

IMPORTANT! THIS DRAWING SUPERSEDES ALL OTHER DOCUMENTS. By signing this approval you accept and agree that the dimensions and details shown are correct and properly fit your application, regardless of any differences between this drawing and any prior contract specifications. Should you have any questions or see any errors, DO NOT SIGN THIS APPROVAL until the drawing is corrected.

SIGN _____ DATE _____

UNLESS OTHERWISE SPECIFIED, DIMENSIONS ARE IN MILLIMETERS. TOLERANCES FOR ROUGH AND CLEAR OPENINGS ARE ±3mm (.125"). ALL OTHERS ARE:

| METRIC | X | .X | .XX | ANGLES |
|----------|------|------|-------|--------|
| | ±2.5 | ±.8 | ±.25 | ±2° |
| IMPERIAL | .X | .XX | .XXX | ANGLES |
| | ±.1 | ±.03 | ±.010 | ±2° |

BAR CODE _____ CAGE CODE 64747



COPYRIGHT 20142015 ADVANTEC GLOBAL INNOVATIONS. ALL RIGHTS RESERVED. CONFIDENTIAL PROPERTY OF ADVANTEC GLOBAL INNOVATIONS. UNAUTHORIZED USE, REPRODUCTION OR DISTRIBUTION IS STRICTLY PROHIBITED. COPIES REMAIN THE PROPERTY OF ADVANTEC GLOBAL INNOVATIONS AND MUST BE RETURNED UPON REQUEST.

CLIENT **FME**

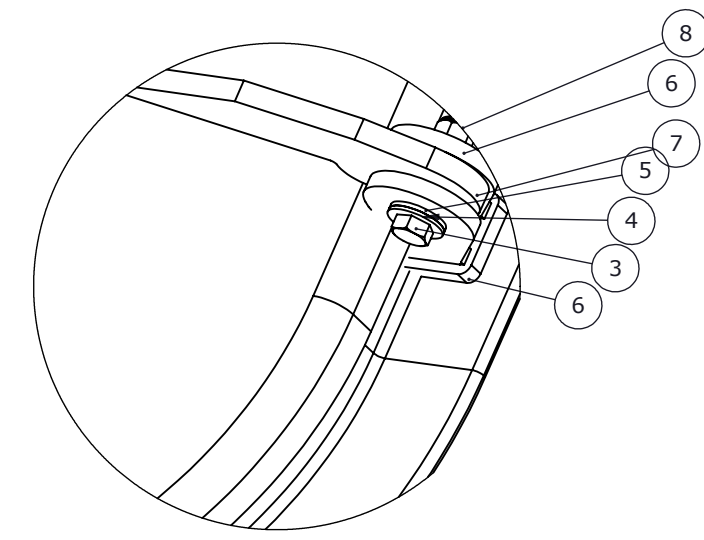
PROJECT TITLE _____

DWG TITLE **WATERTIGHT BULKHEAD DOOR** QTY _____

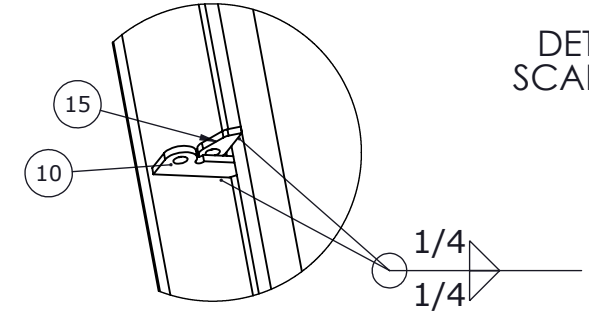
| SCALE | DRAWN | DATE | CHECKED | DATE | SIZE |
|-------|-------|-----------|---------|-----------|------|
| 1:10 | ZJC | 22-Sep-16 | DJM | 22-Sep-16 | B |

| S.O. NO | DWG NO | SHEET | REV |
|---------|------------|--------|-----|
| | 1212-2860R | 1 of 3 | A |

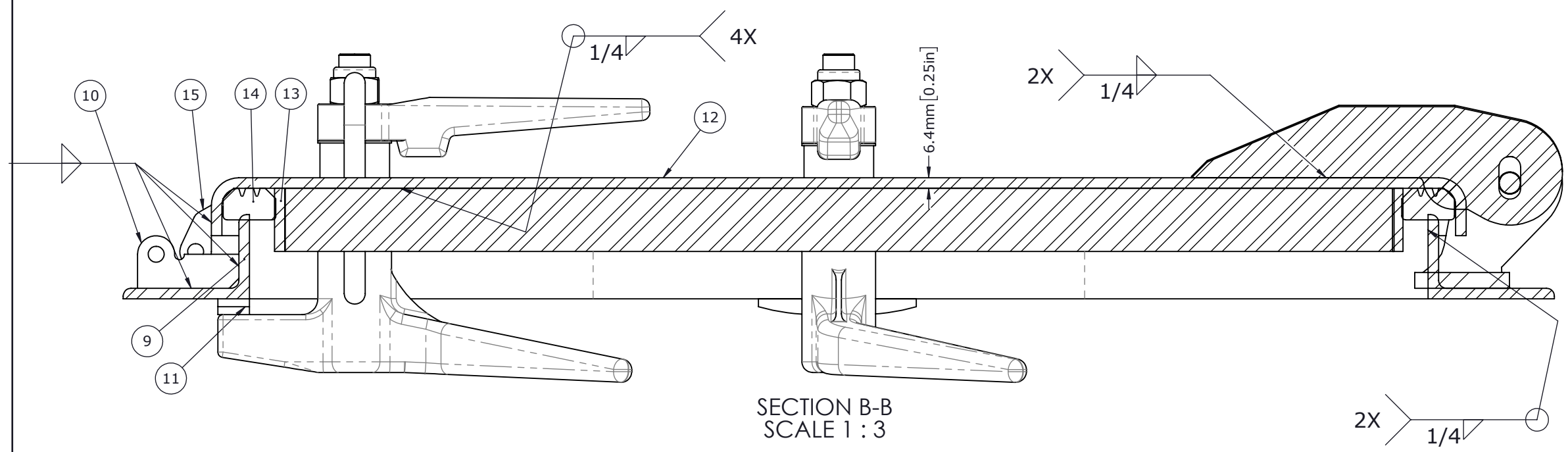
| ITEM | QTY | PART No. | DESCRIPTION | MATERIAL |
|------|-----|------------------|---|--|
| 1 | 3 | 0223-1002 | DOG ASSY, INDIVIDUAL, CENTEX, STEEL,RH | STEEL |
| 2 | 1 | 0223-1003 | DOG ASSY, INDIVIDUAL, CENTEX, STEEL, LH | STEEL |
| 3 | 3 | 0411-2029 | SCREW, HH .5-13X2.5IN | STAINLESS STEEL, 316 |
| 4 | 6 | 0411-2693 | WASHER, FLAT | 316/316L STAINLESS STEEL |
| 5 | 12 | 0413-2111 | WASHER | Nylon 6/10 |
| 6 | 3 | 0462-2637 | HINGE BASE | STAINLESS STEEL |
| 7 | 3 | 0462-2574 | BLADE, HINGE | PLATE, STL .50IN A36 (0715-2028) |
| 8 | 3 | 0411-2027 | NUT .50IN-13 SS 316 NYLOCK | SS 316/316L |
| 9 | 1 | 1212-2860R-101 | MAIN FRAME | ANGLE, STL A36 HR 3X2X.313IN (0615-9534) |
| 10 | 1 | P0004801-001-102 | PADLOCK HASP | PLATE, STL .188IN A36 (0715-2033) |
| 11 | 4 | 1212-2860R-103 | QUICK ACTING DOG WEDGE | BAR, STL A36 HR .375X1IN (0615-9581) |
| 12 | 1 | 1212-2860R-201 | SKIN, EXTERIOR | .25IN THK A36 GRY STL (0715-2027) |
| 13 | 1 | 1212-2860R-202 | GASKET RETAINER/STIFFENER | .25X1.5IN., A36 (0615-9598) |
| 14 | 1 | 1212-2860R-203 | GASKET | 25 DURO NEOPRENE (0631-9854) |
| 15 | 1 | 1212-2860R-207 | PADLOCK HASP | PLATE, STL .188IN A36 (0715-2033) |
| 16 | 3 | 1212-2860R-208 | STIFFENER | .25X1.0IN., A36 (0715-9598) |
| 17 | 2 | 1212-2860R-204 | PULL HANDLE | BAR, STL A36 .5IN DIA ROUND (0615-9600) |



DETAIL F
SCALE 1 : 4



DETAIL G
SCALE 1 : 5



SECTION B-B
SCALE 1 : 3

REVISIONS

SEE SHEET 1

GENERAL NOTES

SEE SHEET 1

WO#

CUSTOMER APPROVAL

IMPORTANT! THIS DRAWING SUPERSEDES ALL OTHER DOCUMENTS. By signing this approval you accept and agree that the dimensions and details shown are correct and properly fit your application, regardless of any differences between this drawing and any prior contract specifications. Should you have any questions or see any errors, DO NOT SIGN THIS APPROVAL until the drawing is corrected.

SIGN _____ DATE _____

UNLESS OTHERWISE SPECIFIED, DIMENSIONS ARE IN MILLIMETERS. TOLERANCES FOR ROUGH AND CLEAR OPENINGS ARE ±3mm (.125"). ALL OTHERS ARE:

| | | | | |
|----------|-----------|-------------|---------------|---------------|
| METRIC | X ±2.5 | .X ±.8 | .XX ±.25 | ANGLES ±2° |
| IMPERIAL | .X ±.1 | .XX ±.03 | .XXX ±.010 | ANGLES ±2° |

BAR CODE _____ CAGE CODE 64747



COPYRIGHT 2014/2015 ADVANTEC GLOBAL INNOVATIONS. ALL RIGHTS RESERVED. CONFIDENTIAL PROPERTY OF ADVANTEC GLOBAL INNOVATIONS. UNAUTHORIZED USE, REPRODUCTION OR DISTRIBUTION IS STRICTLY PROHIBITED. COPIES REMAIN THE PROPERTY OF ADVANTEC GLOBAL INNOVATIONS AND MUST BE RETURNED UPON REQUEST.

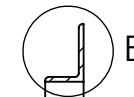
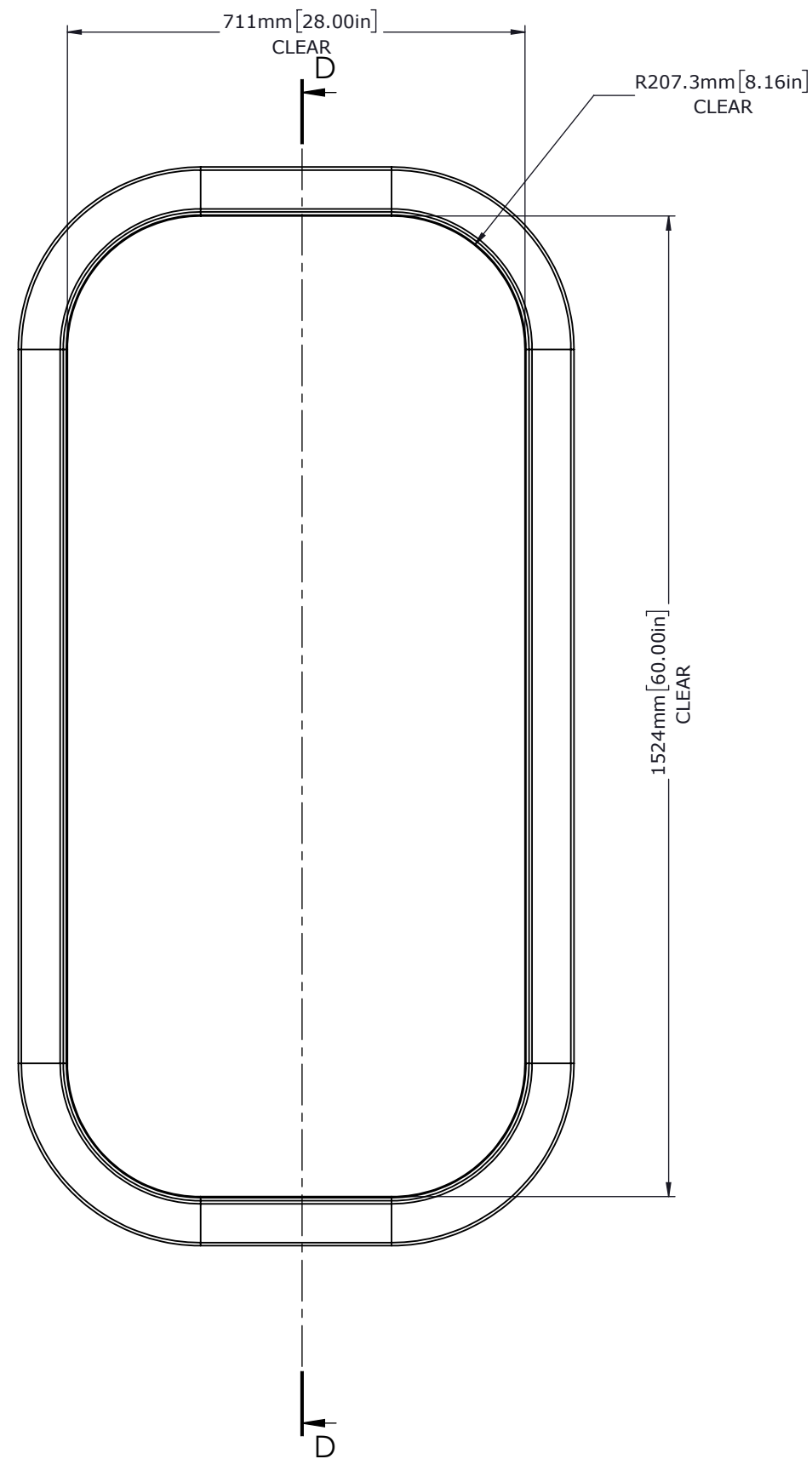
CLIENT FME

PROJECT TITLE _____

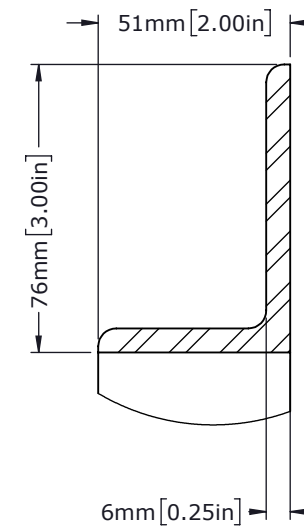
DWG TITLE WATERTIGHT BULKHEAD DOOR QTY _____

| | | | | | |
|------------|-----------|----------------|-------------|----------------|--------|
| SCALE 1:10 | DRAWN ZJC | DATE 22-Sep-16 | CHECKED DJM | DATE 22-Sep-16 | SIZE B |
|------------|-----------|----------------|-------------|----------------|--------|

| | | | |
|----------|--------------------|--------------|-------|
| S.O. NO. | DWG NO. 1212-2860R | SHEET 2 of 3 | REV A |
|----------|--------------------|--------------|-------|



SECTION D-D



DETAIL E
SCALE 1 : 2

REVISIONS

GENERAL NOTES

1. REMOVE ALL BURRS AND BREAK SHARP EDGES AND CORNERS 1.0mm [.04"] MAX.
2. finish: B - COMMERCIAL QUALITY
3. MATERIAL: 2X3X.312 A36 MS

WO#

CUSTOMER APPROVAL

IMPORTANT! THIS DRAWING SUPERSEDES ALL OTHER DOCUMENTS. By signing this approval you accept and agree that the dimensions and details shown are correct and properly fit your application, regardless of any differences between this drawing and any prior contract specifications. Should you have any questions or see any errors, DO NOT SIGN THIS APPROVAL until the drawing is corrected.

SIGN

DATE

UNLESS OTHERWISE SPECIFIED, DIMENSIONS ARE IN MILLIMETERS. TOLERANCES FOR ROUGH AND CLEAR OPENINGS ARE $\pm 3\text{mm}$ (.125"). ALL OTHERS ARE:

| | | | | |
|----------|----------------|------------------|--------------------|-------------------------|
| METRIC | X ± 2.5 | .X $\pm .8$ | .XX $\pm .25$ | ANGLES $\pm 2^\circ$ |
| IMPERIAL | .X $\pm .1$ | .XX $\pm .03$ | .XXX $\pm .010$ | ANGLES $\pm 2^\circ$ |

BAR CODE

CAGE CODE

64747



COPYRIGHT 2014/2015 ADVANTEC GLOBAL INNOVATIONS. ALL RIGHTS RESERVED. CONFIDENTIAL PROPERTY OF ADVANTEC GLOBAL INNOVATIONS. UNAUTHORIZED USE, REPRODUCTION OR DISTRIBUTION IS STRICTLY PROHIBITED. COPIES REMAIN THE PROPERTY OF ADVANTEC GLOBAL INNOVATIONS AND MUST BE RETURNED UPON REQUEST.

CLIENT

FME

PROJECT TITLE

DWG TITLE

MAIN FRAME

QTY

| | | | | | |
|-------|-------|-----------|---------|-----------|------|
| SCALE | DRAWN | DATE | CHECKED | DATE | SIZE |
| 1:10 | ZJC | 22-Sep-16 | DJM | 22-Sep-16 | B |

| | | | |
|---------|----------------|--------|-----|
| S.O. NO | DWG NO | SHEET | REV |
| | 1212-2860R-101 | 3 of 3 | A |