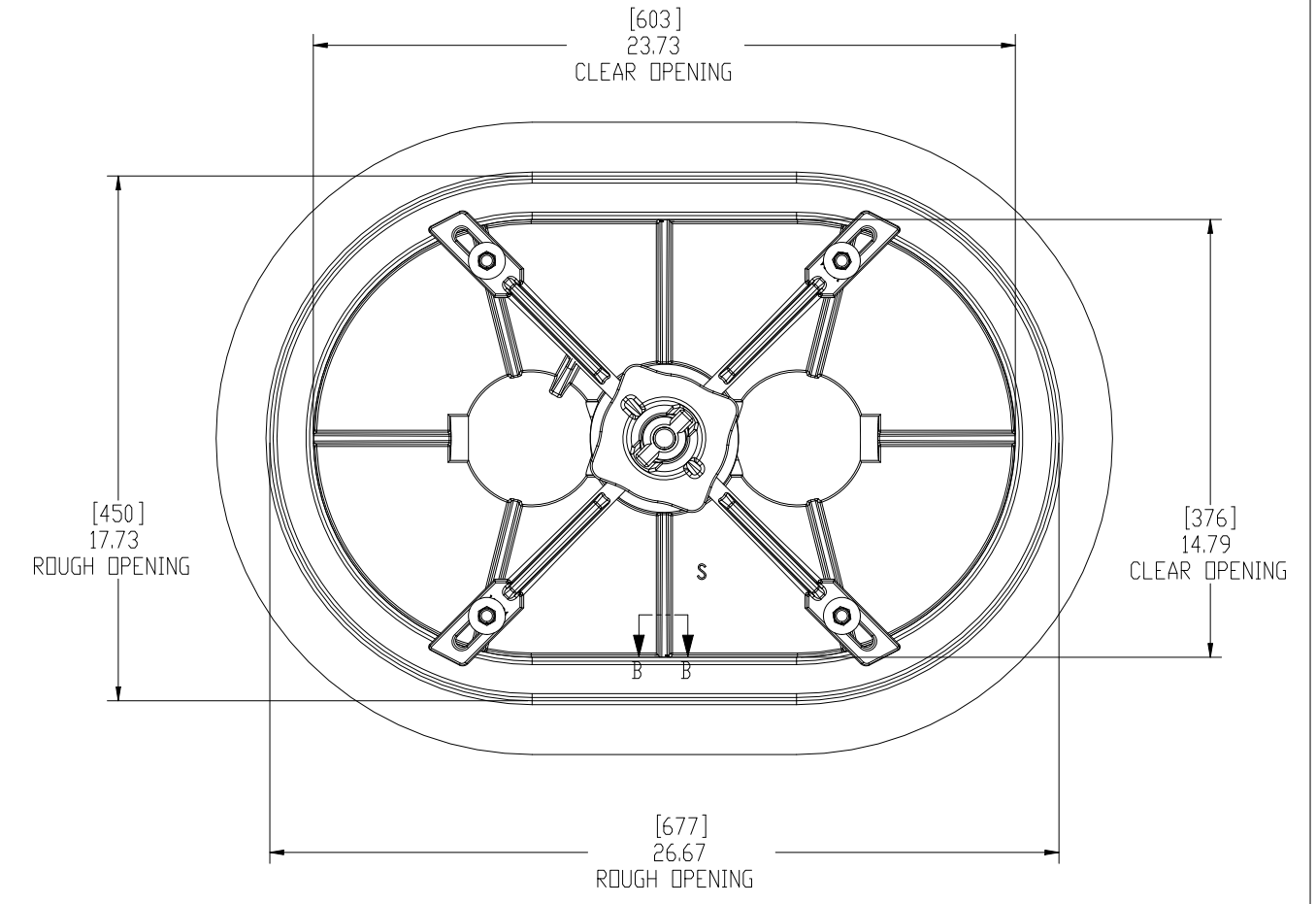
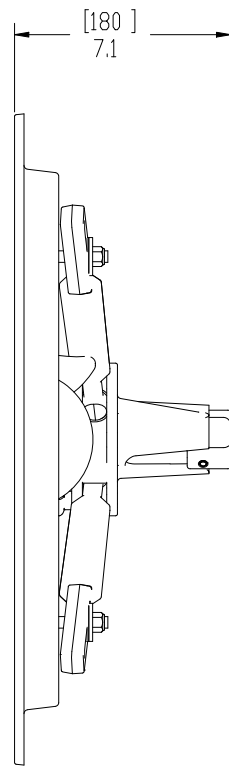
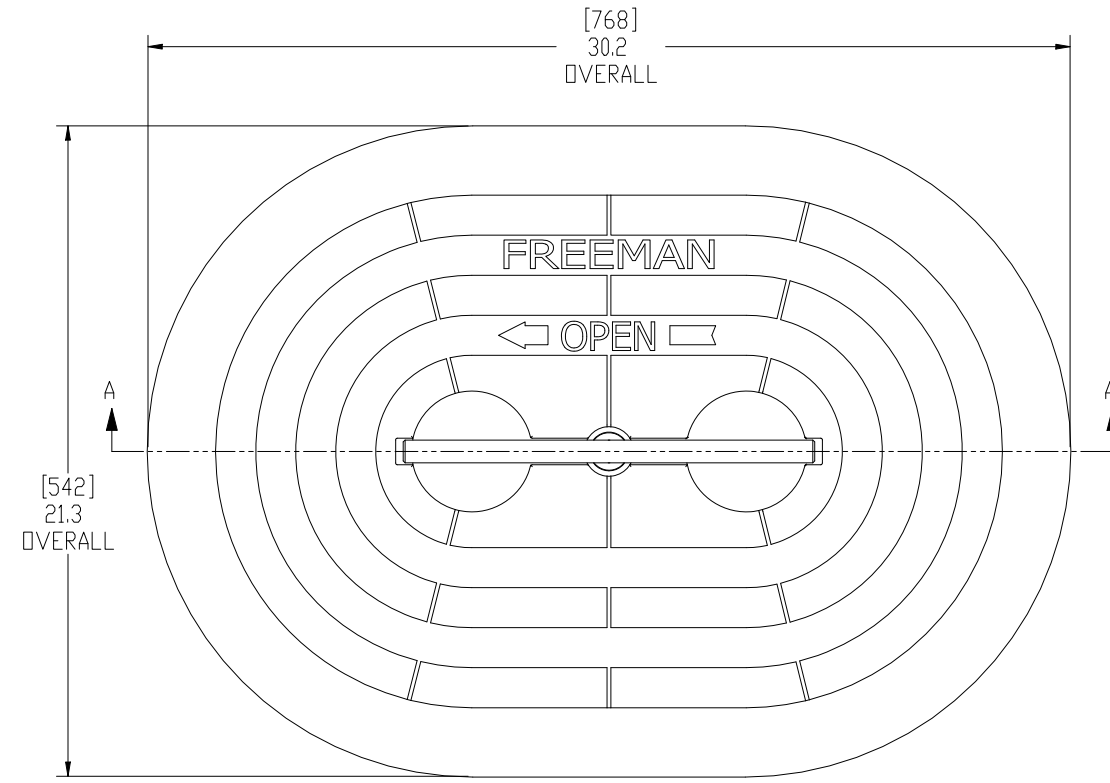


8 7 6 5 4 3 2 1

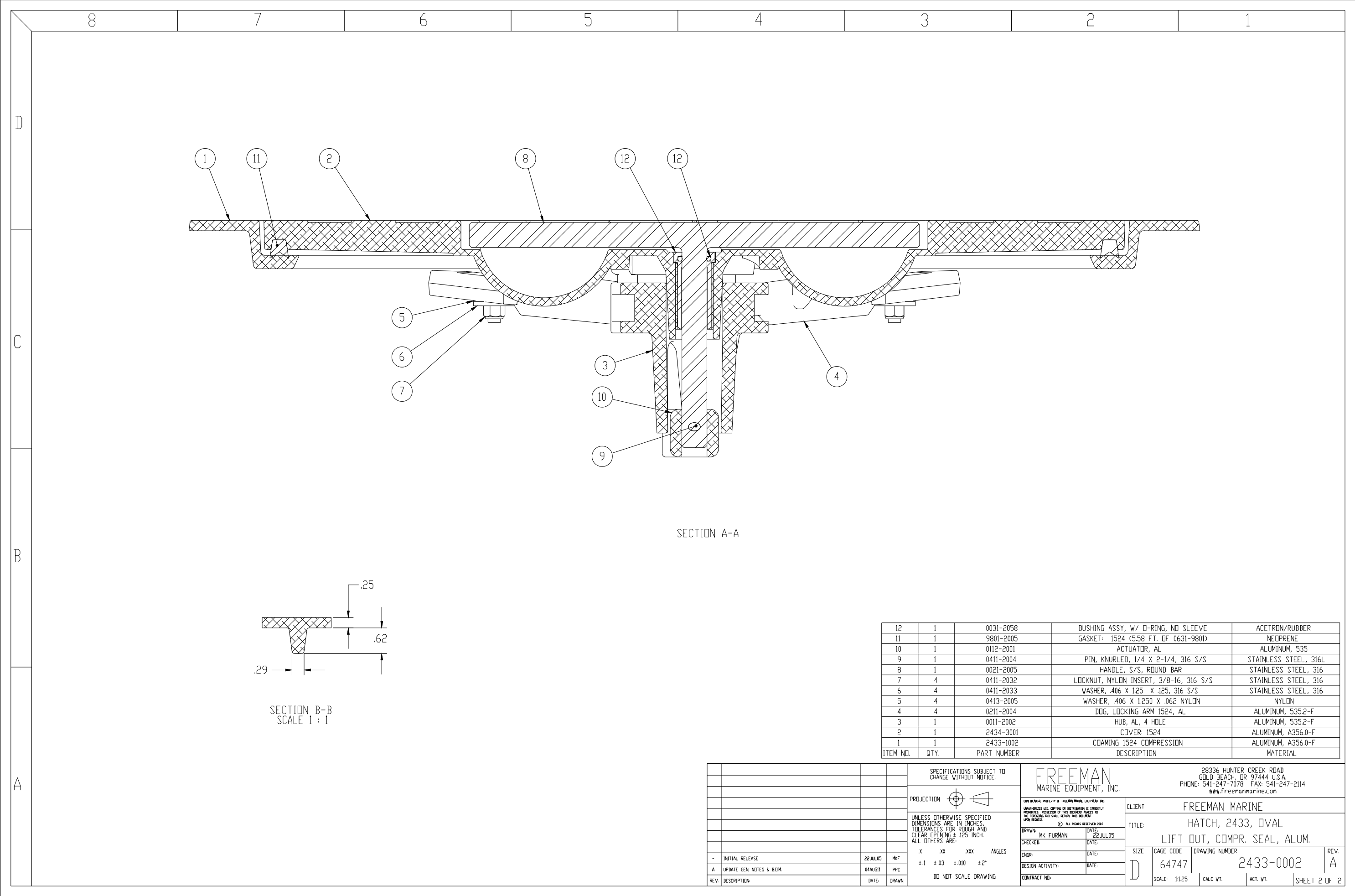
D
C
B
A



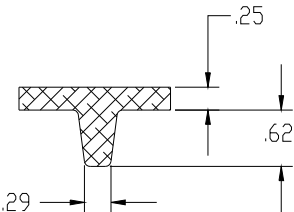
10. FOR SPECIFIC INFORMATION CONTACT SALES.
9. COMPLETE ASSEMBLY WEIGHT W/ DECK RING, 34.9LBS/ 15.8K.
8. DOGGING PRESSURE FULLY ADJUSTABLE.
7. HANDLE POSITION TOPSIDE INDICATES WHETHER DOGGING MECHANISM IS IN OPEN OR CLOSED POSITION.
6. ALUMINUM ALLOY MECHANISM SHOWN.
5. FLUSH, WATERTIGHT CONSTRUCTION.
4. INTEGRAL TOPSIDE "T" HANDLE STANDARD, OTHER TOPSIDE ACTUATION AVAILABLE.
3. CAST ALUMINUM ALLOY FLANGE, FLANGE CAN BE DRILLED FOR BOLTED INSTALLATIONS OR WELDED TO ALUMINUM.
2. QUICK-ACTING, MECHANISM ENGAGES OR DISENGAGES IN QUARTER-TURN OF CENTER SPINDLE.
1. 23.7 x 14.8 CLEAR OPENING, ALL DIMENSIONS SHOWN SUBJECT TO CASTING VARIATION AND ARE REFERENCE ONLY.

NOTES: UNLESS OTHERWISE SPECIFIED.

| | | | | | |
|-----------------------------------------------------------------------------------------------------------------------------------------|--------------------|-------------------------------------------------------------------------------------------------------------------------------------------------------------------------------------------------------------------------------------------------------------------------------------------------------------------------------------------------------------------------------------------------|-------------------------------------------|----------------------------------------------------------------------------------------------------------------------------|--------|
| SPECIFICATIONS SUBJECT TO CHANGE WITHOUT NOTICE. | | FREEMAN MARINE EQUIPMENT, INC. | | 28336 HUNTER CREEK ROAD GOLD BEACH, OR 97444 U.S.A. PHONE: 541-247-7078 FAX: 541-247-2114 www.freemarinmarine.com | |
| PROJECTION | | <small>CONFIDENTIAL PROPERTY OF FREEMAN MARINE EQUIPMENT INC. UNAUTHORIZED USE, COPYING OR DISTRIBUTION IS STRICTLY PROHIBITED. POSSESSION OF THIS DOCUMENT DOES NOT IMPLY PERMISSION TO REPRODUCE OR TRANSMIT IN ANY FORM OR BY ANY MEANS, ELECTRONIC OR MECHANICAL, INCLUDING PHOTOCOPYING, RECORDING, OR BY ANY INFORMATION STORAGE AND RETRIEVAL SYSTEM. © ALL RIGHTS RESERVED 2004</small> | | CLIENT: FREEMAN MARINE | |
| <small>UNLESS OTHERWISE SPECIFIED DIMENSIONS ARE IN INCHES. TOLERANCES FOR ROUGH AND CLEAR OPENING ± .125 INCH. ALL OTHERS ARE:</small> | | <small>DATE: 22JUL05</small> DRAWN: MK FURMAN CHECKED: _____ ENGR: _____ DESIGN ACTIVITY: _____ CONTRACT NO: _____ | | TITLE: HATCH, 2433, OVAL LIFT OUT, COMPR. SEAL, ALUM. | |
| <small>.X .XX .XXX ANGLES ±.1 ±.03 ±.010 ±2°</small> | | <small>DO NOT SCALE DRAWING</small> | | SIZE: D CAGE CODE: 64747 DRAWING NUMBER: 2433-0002 SCALE: 1:3 CALC. VT. _____ ACT. VT. _____ | |
| - INITIAL RELEASE A UPDATE GEN. NOTES & BOM | 22JUL05 04AUG11 | MKF PPC | DATE: _____ DATE: _____ DATE: _____ | REV. A SHEET 1 OF 2 | REV. A |



SECTION A-A



SECTION B-B
SCALE 1 : 1

| ITEM NO. | QTY. | PART NUMBER | DESCRIPTION | MATERIAL |
|----------|------|-------------|----------------------------------------|-----------------------|
| 12 | 1 | 0031-2058 | BUSHING ASSY, W/ O-RING, NO SLEEVE | ACETRON/RUBBER |
| 11 | 1 | 9801-2005 | GASKET: 1524 (5.58 FT. DF 0631-9801) | NEOPRENE |
| 10 | 1 | 0112-2001 | ACTUATOR, AL | ALUMINUM, 535 |
| 9 | 1 | 0411-2004 | PIN, KNURLED, 1/4 X 2-1/4, 316 S/S | STAINLESS STEEL, 316L |
| 8 | 1 | 0021-2005 | HANDLE, S/S, ROUND BAR | STAINLESS STEEL, 316 |
| 7 | 4 | 0411-2032 | LOCKNUT, NYLON INSERT, 3/8-16, 316 S/S | STAINLESS STEEL, 316 |
| 6 | 4 | 0411-2033 | WASHER, .406 X 1.25 X .125, 316 S/S | STAINLESS STEEL, 316 |
| 5 | 4 | 0413-2005 | WASHER, .406 X 1.250 X .062 NYLON | NYLON |
| 4 | 4 | 0211-2004 | DOG, LOCKING ARM 1524, AL | ALUMINUM, 535.2-F |
| 3 | 1 | 0011-2002 | HUB, AL, 4 HOLE | ALUMINUM, 535.2-F |
| 2 | 1 | 2434-3001 | COVER: 1524 | ALUMINUM, A356.0-F |
| 1 | 1 | 2433-1002 | COAMING 1524 COMPRESSION | ALUMINUM, A356.0-F |

| | | | |
|--------------------------------------------------------------------------------------------------------------------------|--|--------------------------------------------------------------------------------------------------------------------------------------------------------------------------------------------------------|--|
| SPECIFICATIONS SUBJECT TO CHANGE WITHOUT NOTICE. | | FREEMAN MARINE EQUIPMENT, INC. 28336 HUNTER CREEK ROAD GOLD BEACH, OR 97444 U.S.A. PHONE: 541-247-7078 FAX: 541-247-2114 www.freemarine.com | |
| PROJECTION | | CLIENT: FREEMAN MARINE | |
| UNLESS OTHERWISE SPECIFIED DIMENSIONS ARE IN INCHES. TOLERANCES FOR ROUGH AND CLEAR OPENING ± .125 INCH. ALL OTHERS ARE: | | TITLE: HATCH, 2433, OVAL LIFT OUT, COMPR. SEAL, ALUM. | |
| X XX XXX ANGLES ±.1 ±.03 ±.010 ±.2* | | DRAWN: MK FURMAN DATE: 22JUL05 CHECKED: DATE: ENGR: DATE: DESIGN ACTIVITY: DATE: CONTRACT NO: | |
| - INITIAL RELEASE 22JUL05 MKF A UPDATE GEN. NOTES & BOM 04AUG11 PPC REV. DESCRIPTION DATE DRAWN | | SIZE: D CAGE CODE: 64747 DRAWING NUMBER: 2433-0002 REV. A SCALE: 1:1.25 CALC. WT. ACT. WT. SHEET 2 OF 2 | |