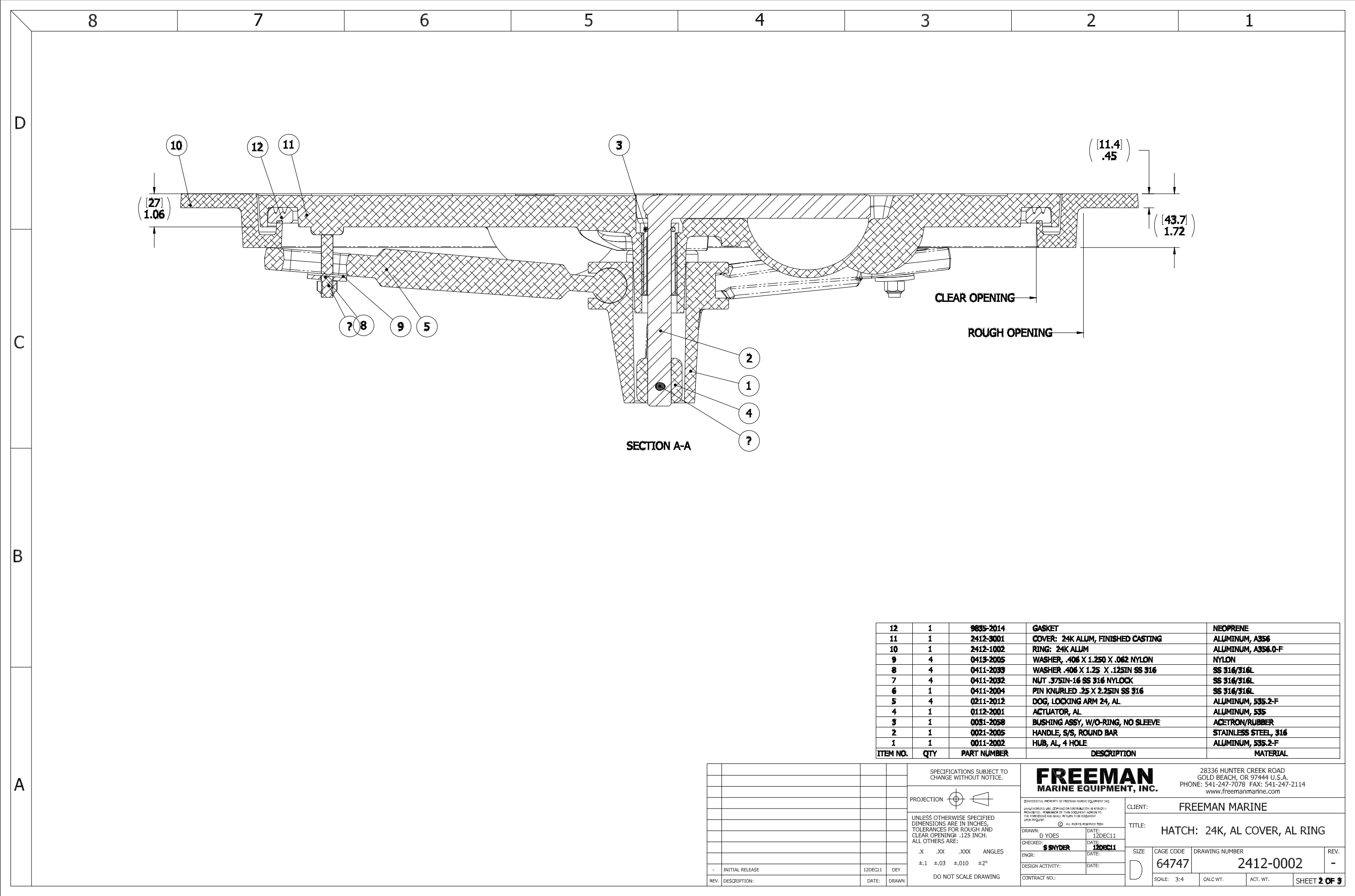


- 10. FOR SPECIFIC INFORMATION CONTACT SALES.
- 9. COMPLETE ASSEMBLY WEIGHT W/ DECK RING, 55LBS/ 24.9KG.
- 8. DOGGING PRESSURE FULLY ADJUSTABLE.
- 7. HANDLE POSITION TOPSIDE INDICATES WHETHER DOGGING MECHANISM IS IN OPEN OR CLOSED POSITION.
- 6. ALUMINUM ALLOY MECHANISM SHOWN.
- 5. FLUSH, WATERTIGHT CONSTRUCTION.
- 4. INTEGRAL TOPSIDE "T" HANDLE STANDARD, OTHER TOPSIDE ACTUATION AVAILABLE.
- 3. CAST ALUMINUM COVER, ALUMINUM COATING.
- 2. QUICK-ACTING, MECHANISM ENGAGES OR DISENGAGES IN QUARTER-TURN OF CENTER SPINDLE.
- 1. 24.0"/ 610MM DIAMETER CLEAR OPENING, ALL DIMENSIONS SHOWN SUBJECT TO CASTING VARIATION AND ARE REFERENCE ONLY.

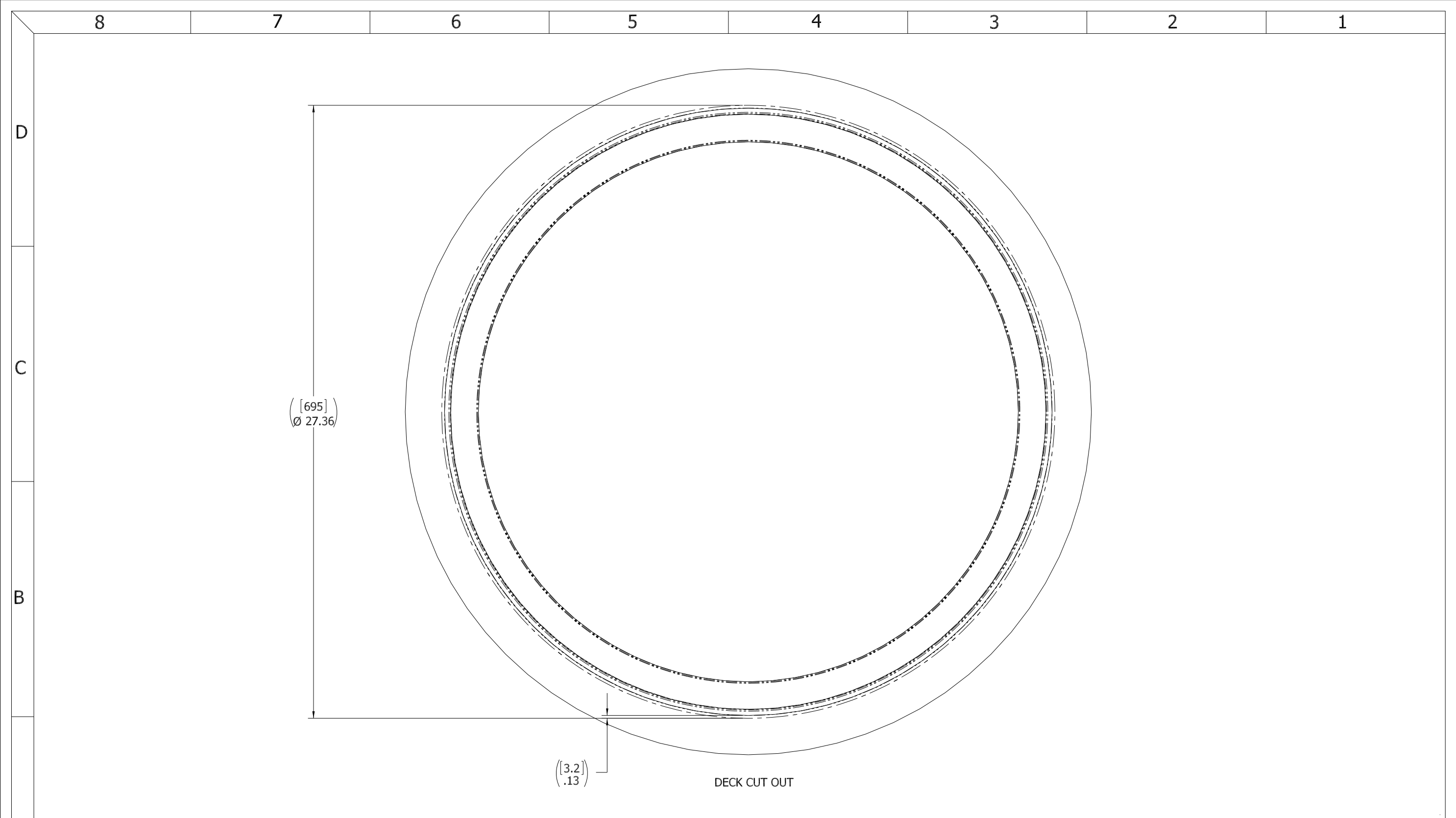
NOTES: UNLESS OTHERWISE SPECIFIED.

SPECIFICATIONS SUBJECT TO CHANGE WITHOUT NOTICE.		FREEMAN MARINE EQUIPMENT, INC.		28336 HUNTER CREEK ROAD GOLD BEACH, OR 97444 U.S.A. PHONE: 541-247-7078 FAX: 541-247-2114 www.freemanmarine.com	
PROJECTION		UNLESS OTHERWISE SPECIFIED DIMENSIONS ARE IN INCHES. TOLERANCES FOR ROUGH AND CLEAR OPENINGS: .125 INCH. ALL OTHERS ARE: .X .XX .XXX ANGLES ±.1 ±.03 ±.010 ±2°		CLIENT: FREEMAN MARINE	
DO NOT SCALE DRAWING		DRAWN: D YOES DATE: 12DEC11 CHECKED: S SNYDER DATE: 12DEC11 ENGR: DATE: DESIGN ACTIVITY: DATE: CONTRACT NO.:		TITLE: HATCH: 24K, AL COVER, AL RING	
- INITIAL RELEASE 12DEC11 DEY		SCALE: 1:2.5		CAGE CODE: 64747	
REV. DESCRIPTION: DATE: DRAWN		DRAWING NUMBER: 2412-0002		REV. -	
		CALC. WT.		ACT. WT.	
		SHEET 1 OF 3			



ITEM NO.	QTY	PART NUMBER	DESCRIPTION	MATERIAL
12	1	9835-2014	GASKET	NEOPRENE
11	1	2412-3001	COVER: 24K ALUM, FINISHED CASTING	ALUMINUM, A356
10	1	2412-1002	RING: 24K ALUM	ALUMINUM, A356.0-F
9	4	0413-2005	WASHER .406 X 1.250 X .062 NYLON	NYLON
8	4	0411-2035	WASHER .406 X 1.25 X .125IN SS 316	SS 316/316L
7	4	0411-2032	NUT .375IN-16 SS 316 NYLOCK	SS 316/316L
6	1	0411-2004	PIN KNURLED .25 X 2.25IN SS 316	SS 316/316L
5	4	0211-2012	DOG, LOCKING ARM 24, AL	ALUMINUM, 535.2-F
4	1	0112-2001	ACTUATOR, AL	ALUMINUM, 535
3	1	0031-2058	BUSHING ASSY, W/O-RING, NO SLEEVE	ACETRON/RUBBER
2	1	0021-2005	HANDLE, S/S, ROUND BAR	STAINLESS STEEL, 316
1	1	0011-2002	HUB, AL, 4 HOLE	ALUMINUM, 535.2-F

SPECIFICATIONS SUBJECT TO CHANGE WITHOUT NOTICE.		FREEMAN MARINE EQUIPMENT, INC. 28336 HUNTER CREEK ROAD GOLD BEACH, OR 97444 U.S.A. PHONE: 541-247-7078 FAX: 541-247-2114 www.freemanmarine.com	
PROJECTION		CLIENT: FREEMAN MARINE	
UNLESS OTHERWISE SPECIFIED DIMENSIONS ARE IN INCHES. TOLERANCES FOR ROUGH AND CLEAR OPENINGS: .125 INCH. ALL OTHERS ARE: .X .XX .XXX ANGLES ±.1 ±.03 ±.010 ±2°		TITLE: HATCH: 24K, AL COVER, AL RING	
INITIAL RELEASE 12DEC11 DEY		CONTRACT NO.:	
REV. DESCRIPTION: DATE: DRAWN:		DRAWN: D YOES DATE: 12DEC11 CHECKED: S SNYDER DATE: 12DEC11 ENGR: DATE: DESIGN ACTIVITY: DATE:	
DO NOT SCALE DRAWING		SIZE: D CAGE CODE: 64747 DRAWING NUMBER: 2412-0002 REV. - SCALE: 3:4 CALC WT. ACT. WT. SHEET 2 OF 3	



- 3. FINISH: 125 RMS MAX.
- 2. BREAK SHARP EDGES AND DEBURR.
- 1. MATERIAL:

NOTES: UNLESS OTHERWISE SPECIFIED.

CUSTOMER APPROVAL

Signature: _____
 Date: _____

IMPORTANT! THIS DRAWING SUPERSEDES ALL OTHER DOCUMENTS. By signing this approval you accept and agree that the dimensions and details shown are correct and properly fit your application, regardless of any differences between this drawing and any contract specifications. Should you see any errors in the drawing, or have any questions, please contact your Freeman Marine sales engineer for clarification.

REV.	DESCRIPTION	DATE	DRAWN
-	INITIAL RELEASE	12DEC11	DEY

SPECIFICATIONS SUBJECT TO CHANGE WITHOUT NOTICE.

PROJECTION

UNLESS OTHERWISE SPECIFIED DIMENSIONS ARE IN INCHES. TOLERANCES FOR ROUGH AND CLEAR OPENINGS: .125 INCH. ALL OTHERS ARE:

.X	.XX	.XXX	ANGLES
±.1	±.03	±.010	±2°

DO NOT SCALE DRAWING

		28336 HUNTER CREEK ROAD GOLD BEACH, OR 97444 U.S.A. PHONE: 541-247-7078 FAX: 541-247-2114 www.freemanmarine.com	
		CLIENT:	FREEMAN MARINE
<small>CONFIDENTIAL PROPERTY OF FREEMAN MARINE EQUIPMENT, INC. UNLESS OTHERWISE SPECIFIED. ALL RIGHTS RESERVED. THIS DRAWING IS THE PROPERTY OF FREEMAN MARINE EQUIPMENT, INC. AND SHALL BE RETURNED UPON REQUEST.</small>		TITLE: HATCH: 24K, AL COVER, AL RING	
DRAWN: D YOES CHECKED: S SNYDER ENGR: DESIGN ACTIVITY: CONTRACT NO.:	DATE: 12DEC11 DATE: 12DEC11 DATE: DATE:	SIZE: D CAGE CODE: 64747 SCALE: 3:4	DRAWING NUMBER: 2412-0002 ACT. WT.: SHEET 3 OF 3