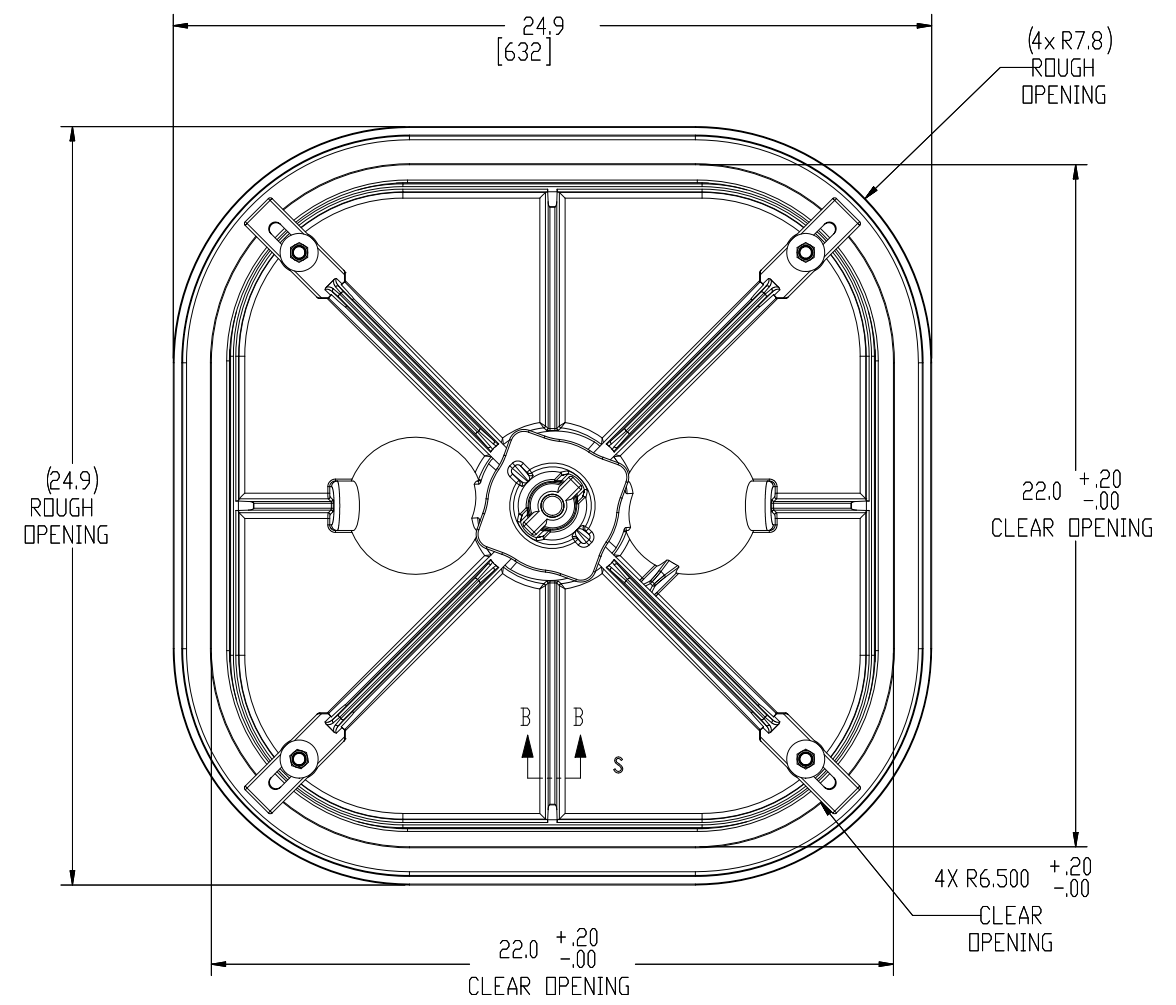
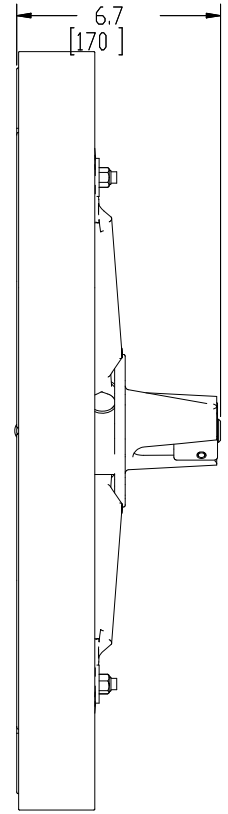
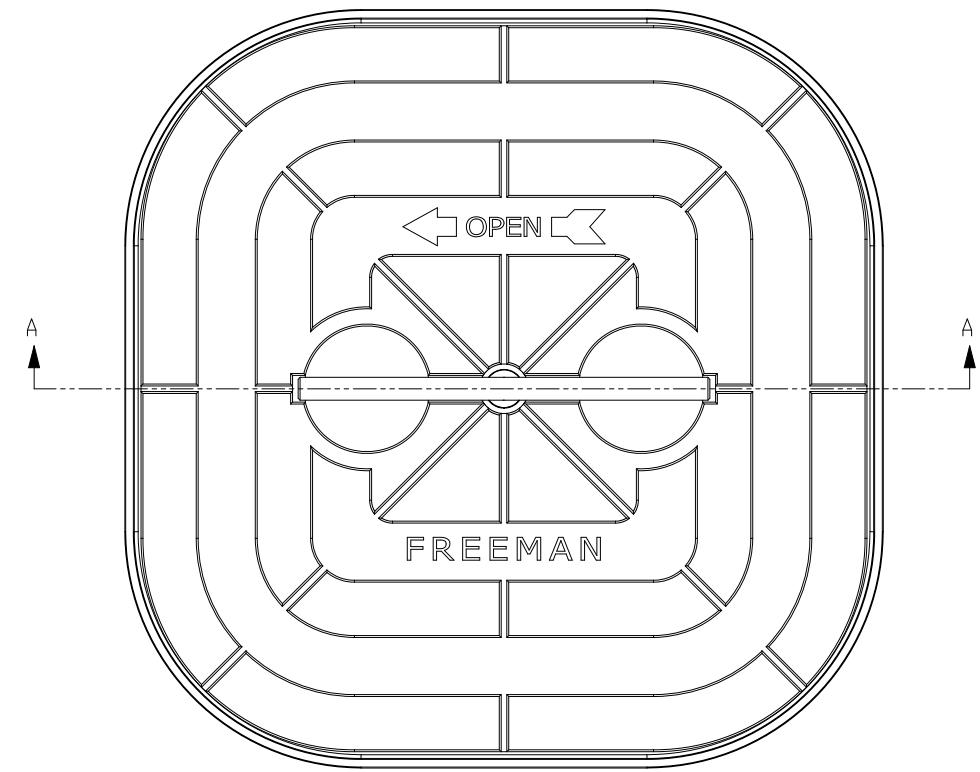


8 7 6 5 4 3 2 1

D
C
B
A



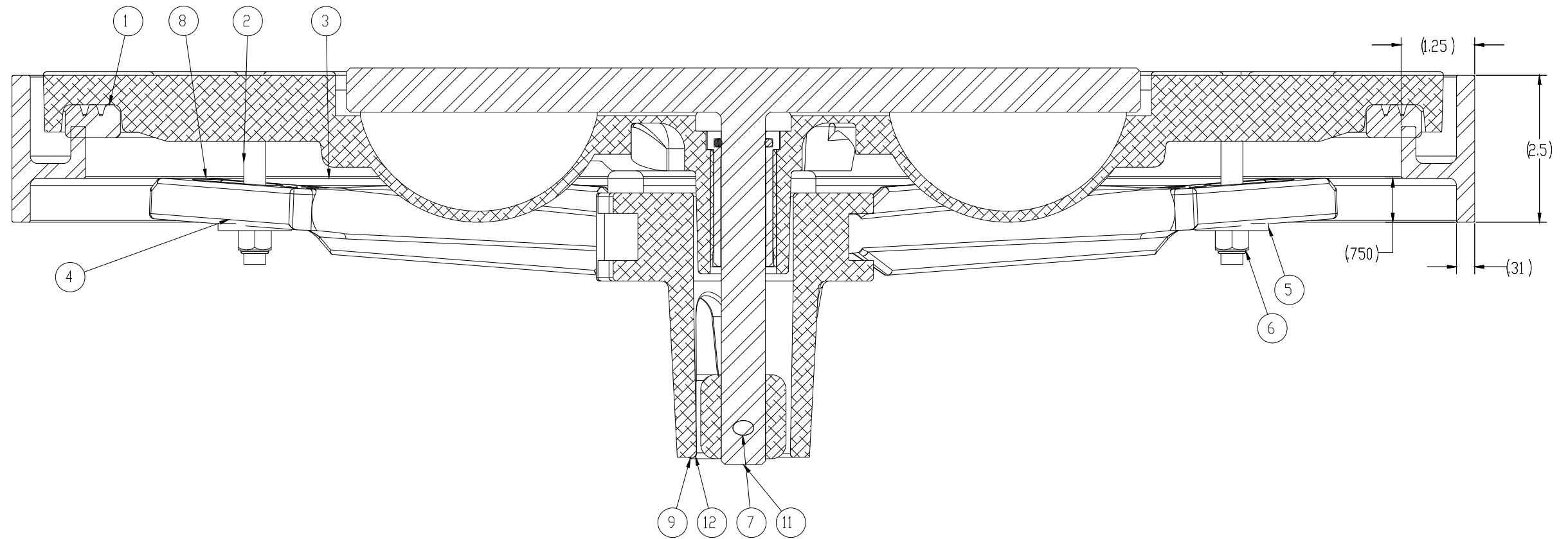
10. FOR SPECIFIC INFORMATION CONTACT SALES.
9. COMPLETE ASSEMBLY WEIGHT W/ DECK RING, 60LBS
8. DOGGING PRESSURE FULLY ADJUSTABLE.
7. HANDLE POSITION TOPSIDE INDICATES WHETHER DOGGING MECHANISM IS IN OPEN OR CLOSED POSITION.
6. ALUMINUM ALLOY MECHANISM SHOWN.
5. FLUSH, WATERTIGHT CONSTRUCTION.
4. INTEGRAL TOPSIDE "T" HANDLE STANDARD, OTHER TOPSIDE ACTUATION AVAILABLE.
3. MILD STEEL RING, RING CAN BE WELDED.
2. QUICK-ACTING, MECHANISM ENGAGES OR DISENGAGES IN QUARTER-TURN OF CENTER SPINDLE.
1. 22.4" X 22.4" CLEAR OPENING, ALL DIMENSIONS SHOWN SUBJECT TO CASTING VARIATION AND ARE REFERENCE ONLY.

NOTES: UNLESS OTHERWISE SPECIFIED.

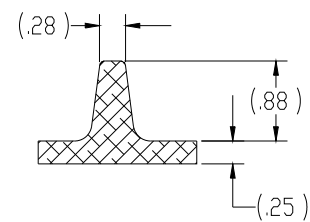
SPECIFICATIONS SUBJECT TO CHANGE WITHOUT NOTICE.		FREEMAN MARINE EQUIPMENT, INC.		28336 HUNTER CREEK ROAD GOLD BEACH, OR 97444 U.S.A. PHONE: 541-247-7078 FAX: 541-247-2114 www.freemarinmarine.com	
PROJECTION		<small>CONFIDENTIAL PROPERTY OF FREEMAN MARINE EQUIPMENT INC. UNAUTHORIZED USE, COPYING OR DISTRIBUTION IS STRICTLY PROHIBITED. POSSESSION OF THIS DOCUMENT GRANTS NO RIGHTS AND SHALL RETURN THIS DOCUMENT UPON REQUEST.</small>		CLIENT: FREEMAN MARINE	
<small>UNLESS OTHERWISE SPECIFIED DIMENSIONS ARE IN INCHES. TOLERANCES FOR ROUGH AND CLEAR OPENING ± .125 INCH. ALL OTHERS ARE:</small>		<small>© ALL RIGHTS RESERVED 2014</small>		TITLE: 22" X 22" SQUARE "K" STYLE ALUMINUM CAST HATCH, MILD STEEL RING W/ INTEGRAL TOPSIDE HANDLE	
<small>.X .XX .XXX ANGLES ±.1 ±.03 ±.010 ±2°</small>		<small>DO NOT SCALE DRAWING</small>		SIZE: D CAGE CODE: 64747 DRAWING NUMBER: 2423-0003	
A PRODUCTION RELEASE REV. DESCRIPTION		DATE: 28MAY13 DRAWN: ZJC		SCALE: 1:3 CALC. WT. ACT. WT. SHEET 1 OF 3	

8 7 6 5 4 3 2 1

D
C
B
A



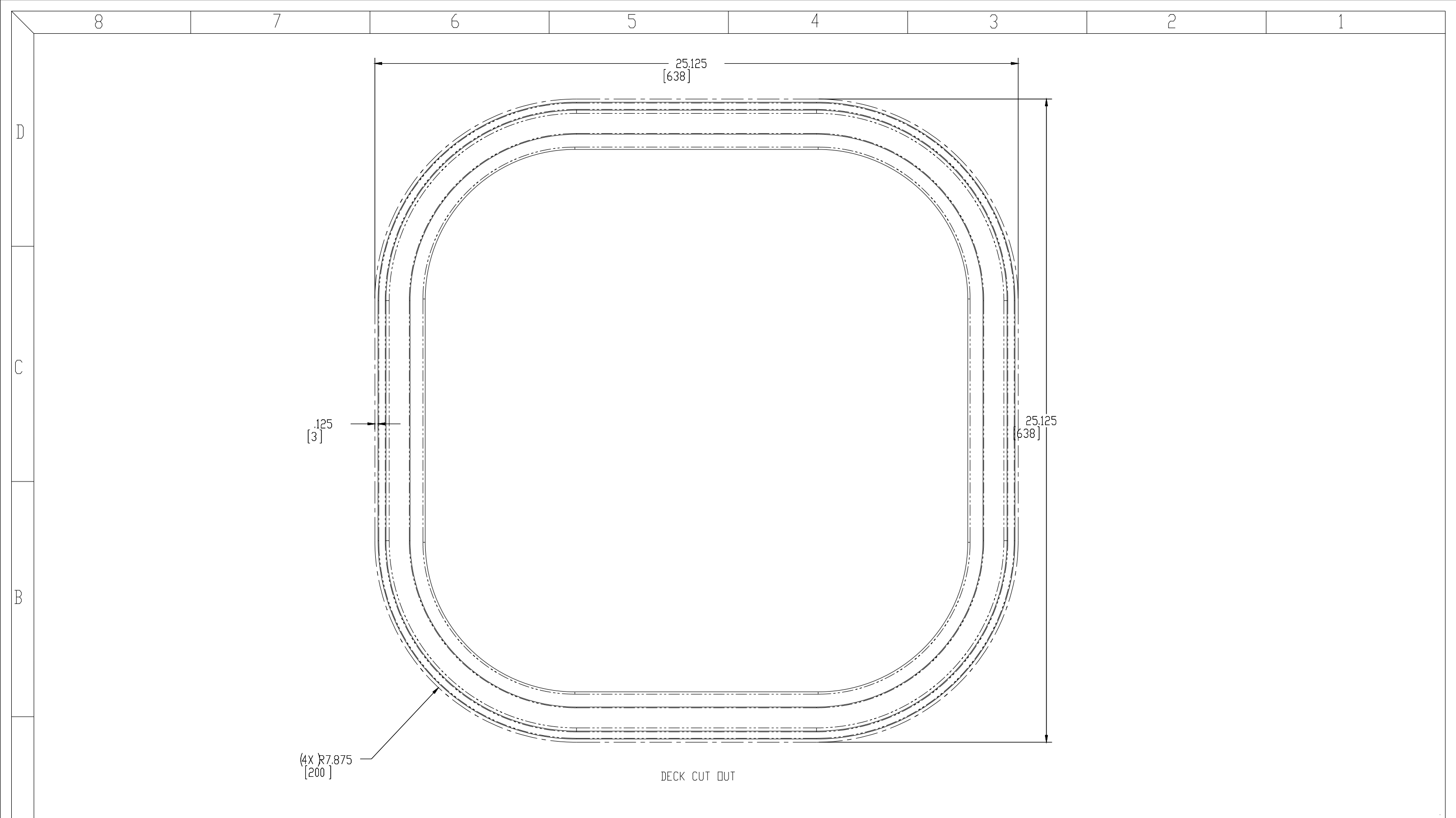
SECTION A-A
SCALE 1 : 2



SECTION B-B

ITEM NO.	QTY.	PART NUMBER	DESCRIPTION	MATERIAL
12	1	0011-2002	HUB, AL, 4 HOLE	ALUMINUM, 5352-F
11	1	0021-2005	HANDLE, S/S, ROUND BAR	STAINLESS STEEL, 316
10	1	0031-2058	BUSHING ASSY, W/O-RING, NO SLEEVE	ACETRON/RUBBER
9	1	0112-2001	ACTUATOR, AL	ALUMINUM, 535
8	4	0211-2011	DDG, LOCKING ARM 2222, AL	ALUMINUM, 5352-F
7	1	0411-2004	PIN, KNURLED, 1/4 X 2-1/4, 316 S/S	STAINLESS STEEL, 316L
6	4	0411-2032	LOCKNUT, NYLON INSERT, 3/8-16, 316 S/S	STAINLESS STEEL, 316
5	4	0411-2033	WASHER, .406 X 1.25 X .125, 316 S/S	STAINLESS STEEL, 316
4	4	0413-2005	WASHER, .406 X 1.250 X .062 NYLON	NYLON
3	1	2423-1003	RING 2424 K	MILD STEEL 316
2	1	2423-3001	CASTING, HATCH COVER 2222	ALUMINUM, A356.0-F
1	1	9813-2003	GASKET: 2222 (6.50 FT. DF 0631-9813)	NEOPRENE, 25 DURO

SPECIFICATIONS SUBJECT TO CHANGE WITHOUT NOTICE.		FREEMAN MARINE EQUIPMENT, INC. 28336 HUNTER CREEK ROAD GOLD BEACH, OR 97444 U.S.A. PHONE: 541-247-7078 FAX: 541-247-2114 WWW.FREEMANMARINE.COM	
PROJECTION		CLIENT: FREEMAN MARINE	
UNLESS OTHERWISE SPECIFIED DIMENSIONS ARE IN INCHES. TOLERANCES FOR ROUGH AND CLEAR OPENING ± .125 INCH. ALL OTHERS ARE:		TITLE: 22" X 22" SQUARE "K" STYLE ALUMINUM CAST HATCH, MILD STEEL RING W/ INTEGRAL TOPSIDE HANDLE	
X XX XXX ANGLES ±.1 ±.03 ±.010 ±2°		SIZE: D CAGE CODE: 64747 DRAWING NUMBER: 2423-0003	
DO NOT SCALE DRAWING		SCALE: 1:1 CALC. WT. ACT. WT. SHEET 2 OF 3	
A PRODUCTION RELEASE REV. DESCRIPTION	28MAY13 DATE:	ZJC DRAWN	CONTRACT NO.



- 3. FINISH: 125 RMS MAX.
 - 2. BREAK SHARP EDGES AND DEBURR.
 - 1. MATERIAL: REF. S/A - B.O.M.
- NOTES: UNLESS OTHERWISE SPECIFIED.

CUSTOMER APPROVAL

Signature: _____
 Date: _____

IMPORTANT! THIS DRAWING SUPERSEDES ALL OTHER DOCUMENTS. By signing this approval you accept and agree that the dimensions and details shown are correct and properly fit your application, regardless of any differences between this drawing and any contract specifications. Should you see any errors in the drawing, or have any questions, please contact your Freeman Marine sales engineer for clarification.

REV.	DESCRIPTION	DATE	DRAWN
A	PRODUCTION RELEASE	28MAY13	ZJC

SPECIFICATIONS SUBJECT TO CHANGE WITHOUT NOTICE.

PROJECTION

UNLESS OTHERWISE SPECIFIED DIMENSIONS ARE IN INCHES. TOLERANCES FOR ROUGH AND CLEAR OPENING ± .125 INCH. ALL OTHERS ARE:
 .X .XX .XXX ANGLES
 ±.1 ±.03 ±.010 ±2°

DO NOT SCALE DRAWING

FREEMAN MARINE EQUIPMENT, INC. <small>CONFIDENTIAL PROPERTY OF FREEMAN MARINE EQUIPMENT, INC. ALL RIGHTS RESERVED 2012. FREEMAN MARINE EQUIPMENT, INC. IS NOT RESPONSIBLE FOR ANY REPRODUCTION OR ALTERATION OF THIS DRAWING WITHOUT THE WRITTEN PERMISSION OF FREEMAN MARINE EQUIPMENT, INC.</small>		28336 HUNTER CREEK ROAD GOLD BEACH, OR 97444 U.S.A. PHONE: 541-247-7078 FAX: 541-247-2114 WWW.FREEMANMARINE.COM	
		CLIENT: FREEMAN MARINE	
DRAWN: Z. CARPENTER DATE: 28MAY13 CHECKED: D. YONES DATE: 28MAY13 ENGR: DATE: DESIGN ACTIVITY: DATE: CONTRACT NO:		TITLE: 22" X 22" SQUARE "K" STYLE ALUMINUM CAST HATCH, MILD STEEL RING	
SIZE: D	CAGE CODE: 64747	DRAWING NUMBER: 2423-0003	REV: A
SCALE: 1:1.75	CALC. WT.	ACT. WT.	SHEET 3 OF 3