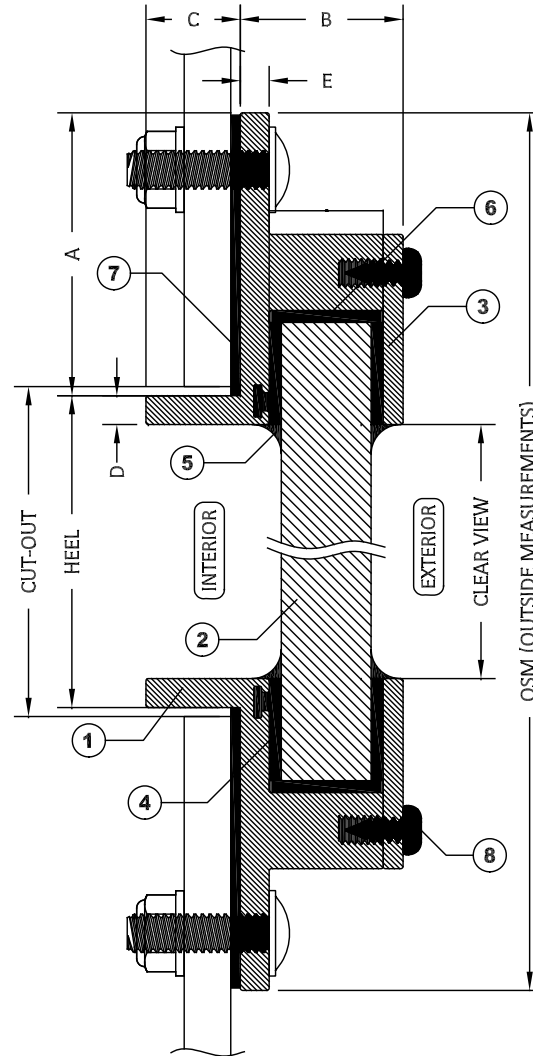
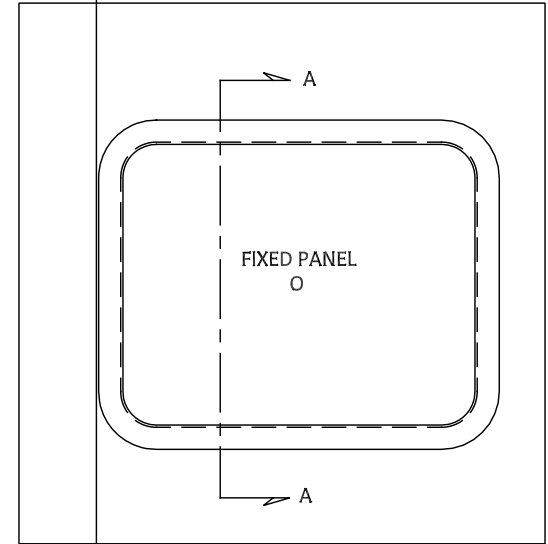


ITEMS			
ID	DESCRIPTION	MATERIAL	PART NUMBER
1	MOUNTING FRAME	6063 ALUMINUM	MT-EX28222
2	GLAZING	GLASS 12mm (1/2") & 15mm (5/8")	
3	600 STOP	6063 ALUMINUM	MT - EX28226
4	BUTYL TAPE		ADTA1/8X3/8B
5	SEALANT	SILICONE	
6	BACKFILL	URETHANE	
7	BEDDING COMPOUND	CUSTOMER TO SUPPLY	
8	STOP SCREW	S.S.	

STANDARD DIMENSIONS		
ID	DESCRIPTION	DIMENSION
A	FLANGE COVERAGE	47mm (1 13/16")
B	EXTERIOR PROTRUSION	27mm (1 1/16")
C	INTERIOR PROTRUSION	16mm (5/8")
D	SPIGOT TO CLEAR VIEW	5mm (3/16")
E	FLANGE THICKNESS	5mm (3/16")



SECTION A-A WITH BOLT-ON INSTALLATION



NOTES:

- GENERAL HEEL TOLERANCE +0/-1/4" OVERALL
- AVAILABLE WITH 4"(102mm) RADIUS OR MITERED CORNERS
- STANDARD MOUNTING HOLES ARE 1/4" WITH #8 COUNTERSUNK ON 6" NOMINAL CENTERS

DRAWING NUMBER

600F

DIAMOND SEA GLAZE MANUFACTURING LTD.
26995 GLOUCESTER WAY, LANGLEY B.C.
CANADA V4W 3Y3
TOLL FREE: 1-800-770-0455
PHONE: 604-607-0091
FAX: 604-607-0092

SCALE

NTS

BY

LD

ITEM NAME

600F

REVISION

0

ALL DRAWINGS AND ANY ASSOCIATED INFORMATION HEREON CONTAIN PROPRIETARY AND/OR CONFIDENTIAL INFORMATION, AND SHALL NOT BE REPRODUCED, DISCLOSED OR SUBMITTED TO ANY THIRD PARTY WITHOUT PRIOR CONSENT FROM DIAMOND SEA GLAZE MANUFACTURING LTD.

Xref Q:\dsg\dwg

FIXED WINDOW