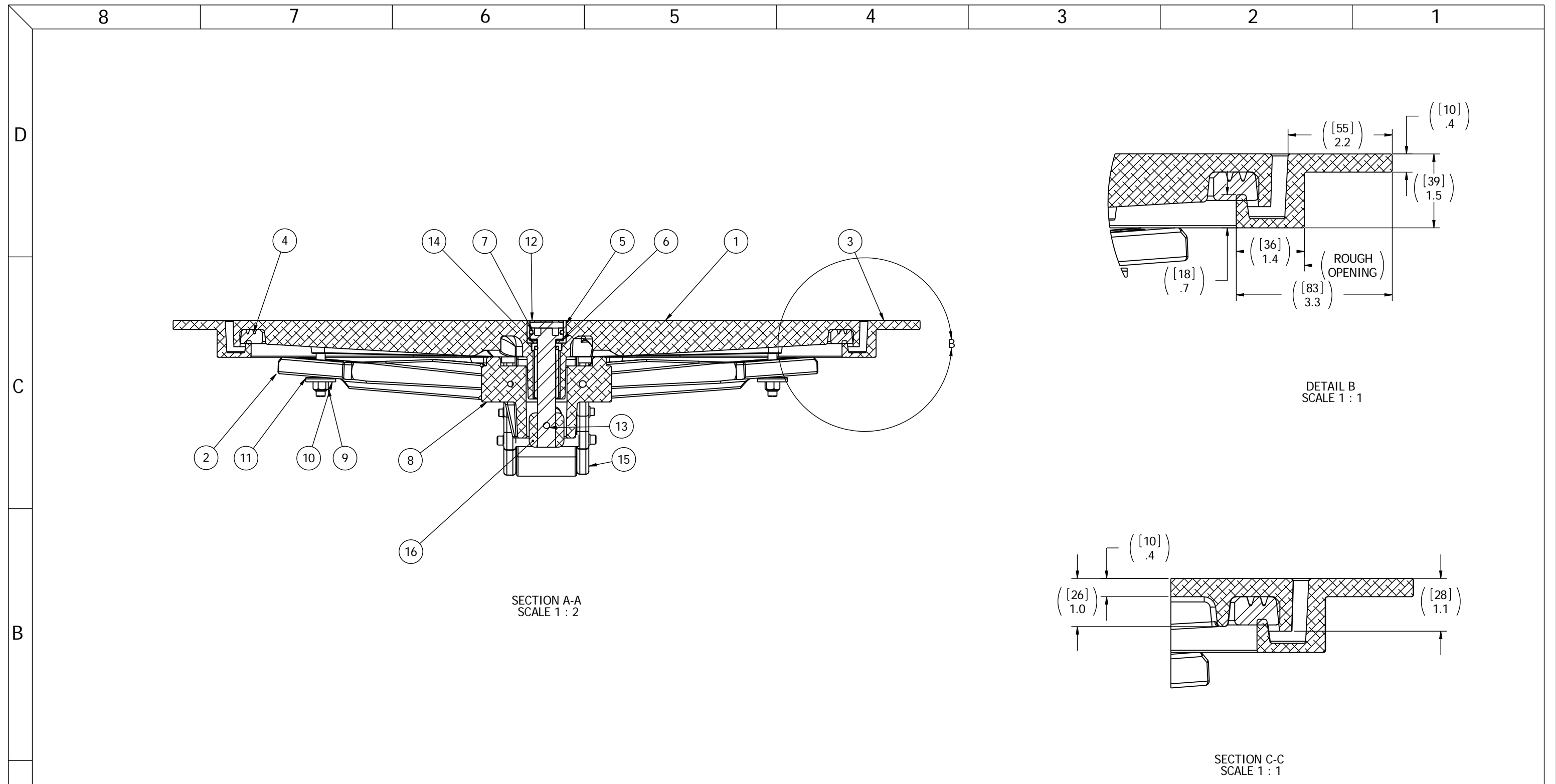


9. THIS DRAWING PROVIDES THE GENERAL CONFIGURATION OF A HATCH, FOR SPECIFIC INFORMATION CONTACT FREEMAN MARINE SALES.
8. ALUMINUM ALLOY MECHANISM SHOWN.
7. FLUSH, WATERTIGHT CONSTRUCTION.
6. INTERLOCKING SPINDLE EXTERIOR.
5. COAMING MATERIAL ALUMINUM, A356.
4. DIMENSIONS ARE SHOWN IN REFERENCE STATE DUE TO VARIATIONS IN THE CASTING PROCESS.
3. COVER MATERIAL ALUMINUM, A356.
2. QUICK ACTING MECHANISM ENGAGES OR DISENGAGES IN QUARTER-TURN OF CENTER SPINDLE.
1. 24.6" X 24.6" CLEAR OPENING.
- NOTES: UNLESS OTHERWISE SPECIFIED.

SPECIFICATIONS SUBJECT TO CHANGE WITHOUT NOTICE.		<b>FREEMAN</b> MARINE EQUIPMENT, INC.		28336 HUNTER CREEK ROAD GOLD BEACH, OR 97444 U.S.A. PHONE: 541-247-7078 FAX: 541-247-2114 www.freemanmarine.com	
PROJECTION		<small>CONFIDENTIAL PROPERTY OF FREEMAN MARINE EQUIPMENT, INC. UNAUTHORIZED USE, COPYING OR DISTRIBUTION IS STRICTLY PROHIBITED. POSSESSOR OF THIS DOCUMENT AGREES TO THE FOREGOING AND SHALL RETURN THIS DOCUMENT UPON REQUEST.</small>		CLIENT: FREEMAN MARINE	
<small>UNLESS OTHERWISE SPECIFIED DIMENSIONS ARE IN INCHES, TOLERANCES FOR ROUGH AND CLEAR OPENING ±.125 INCH. ALL OTHERS ARE:</small>		<small>ALL RIGHTS RESERVED 2004</small>		TITLE: MODLE 2495, QUICK ACTING HATCH 2424K YOKE HINGED	
.X .XX .XXX ANGLES ±.1 ±.03 ±.010 ±2°		DRAWN: S SYNDER DATE: 7 OCT 08 CHECKED: P. CANCELLIERI DATE: 10DEC09 ENGR: DATE:		SIZE: <b>D</b> CAGE CODE: 64747 DRAWING NUMBER: 2495-0062 REV: -	
INITIAL RELEASE: 7 OCT 08 SAS		DESIGN ACTIVITY: DATE:		SCALE: 1:8 CALC. WT. ACT. WT. SHEET 1 OF 3	
REV. DESCRIPTION: DATE: DRAWN		CONTRACT NO.:		DO NOT SCALE DRAWING	



ITEM NO.	CLOSED/ QTY.	PART NUMBER	DESCRIPTION	MATERIAL
16	1	0112-2001	ACTUATOR, AL	ALUMINUM, 535
15	1	0461-2077	HINGE ASSY, YOKE, CAST HATCH, W/HOLD OPEN	ALUM W/ VARIOUS COMPONENTS
14	1	0031-2001	BUSHING ASSY, STD HATCH, W/SLEEVE	VARIOUS
13	1	0411-2004	PIN KNURLED .25 X 2.25IN SS 316	SS 316/316L
12	1	0031-2107	SPINDLE, INTERLOCKING, FLUSH TO 1/4 TEAK	STAINLESS STEEL, 316L
11	4	0413-2005	WASHER, .406 X 1.250 X .062 NYLON	NYLON
10	4	0411-2033	WASHER .406 X 1.25 X .125IN SS 316	SS 316/316L
9	4	0411-2032	NUT .375IN-16 SS 316 NYLOCK	SS 316/316L
8	1	0011-2006	HUB, 4 HOLE - SHORT	ALUMINUM, 535.2
7	1	0441-2045	O-RING, 27MM X 4MM	BUNA-N
6	1	0413-2049	WASHER, SHIM CAST HATCH BI-SQ	ACETAL, BLACK
5	1	0441-2133	CUP, INTERLOCKING SPINDLE, FLUSH TO 1/4	STAINLESS STEEL, 316L
4	1	9813-2004	GASKET, 2424 (7.33' OF 0631-9813)	NEOPRENE
3	1	2495-1002	RING: 2424 ALUM W/FLANGE, BOSS, YH	ALUMINUM, 356
2	4	0211-2013	DOG, LOCKING ARM	ALUMINUM, 535.2-F
1	1	2495-3041	CASTING, HATCH COVER, 2424	ALUMINUM, 356

REV.	DESCRIPTION:	DATE:	DRAWN:
-	INITIAL RELEASE	7 OCT 08	SAS

SPECIFICATIONS SUBJECT TO CHANGE WITHOUT NOTICE.

PROJECTION

UNLESS OTHERWISE SPECIFIED DIMENSIONS ARE IN INCHES, TOLERANCES FOR ROUGH AND CLEAR OPENING ± .125 INCH. ALL OTHERS ARE:

.X .XX .XXX ANGLES  
±.1 ±.03 ±.010 ±2°

DO NOT SCALE DRAWING

**FREEMAN**  
MARINE EQUIPMENT, INC.

28336 HUNTER CREEK ROAD  
GOLD BEACH, OR 97444 U.S.A.  
PHONE: 541-247-7078 FAX: 541-247-2114  
www.freemanmarine.com

CLIENT: FREEMAN MARINE

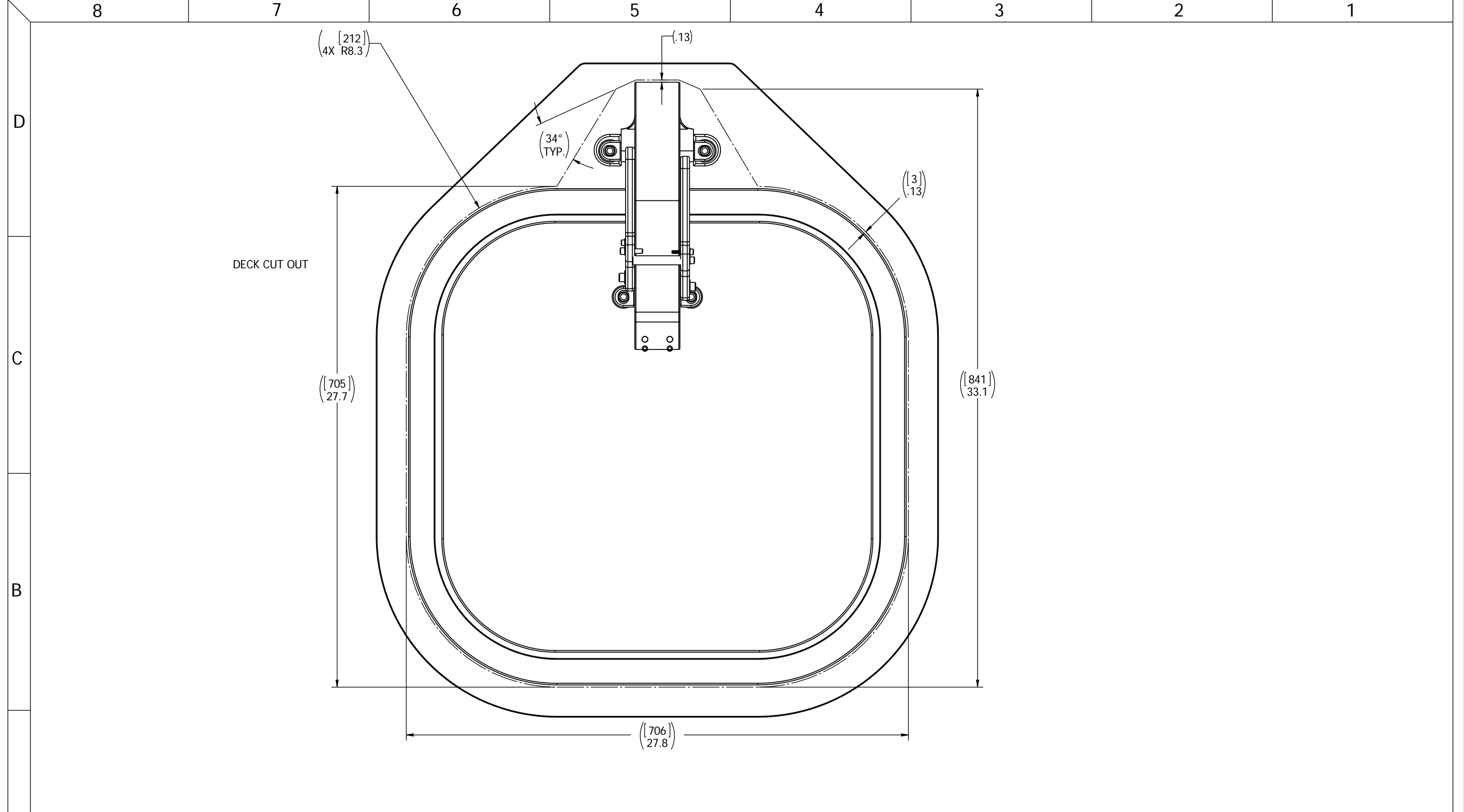
TITLE: MODLE 2495, QUICK ACTING HATCH  
2424K YOKE HINGED

CONFIDENTIAL PROPERTY OF FREEMAN MARINE EQUIPMENT, INC. UNAUTHORIZED USE, COPYING OR DISTRIBUTION IS STRICTLY PROHIBITED. POSSESSION OF THIS DOCUMENT AGREES TO THE FOREGOING AND SHALL RETURN THIS DOCUMENT UPON REQUEST. © ALL RIGHTS RESERVED 2004

DRAWN: S SYNDER DATE: 7 OCT 08  
CHECKED: P. CANCELLIERI DATE: 10DEC09  
ENGR: DATE:  
DESIGN ACTIVITY: DATE:  
CONTRACT NO.:

SIZE: **D** CAGE CODE: 64747 DRAWING NUMBER: 2495-0062 REV: -

SCALE: 1:8 CALC. WT. ACT. WT. SHEET 2 OF 3



- 3. FINISH: 125 RMS MAX.
- 2. BREAK SHARP EDGES AND DEBURR.
- 1. MATERIAL: ALUMINUM

NOTES: UNLESS OTHERWISE SPECIFIED.

**CUSTOMER APPROVAL**

Signature: \_\_\_\_\_  
 Date: \_\_\_\_\_

IMPORTANT! THIS DRAWING SUPERSEDES ALL OTHER DOCUMENTS. By signing this approval you accept and agree that the dimensions and details shown are correct and properly fit your application, regardless of any differences between this drawing and any contract specifications. Should you see any errors in the drawing, or have any questions, please contact your Freeman Marine sales engineer for clarification.

REV.	DESCRIPTION:	DATE:	DRAWN:
-	INITIAL RELEASE	7 OCT 08	SAS

SPECIFICATIONS SUBJECT TO CHANGE WITHOUT NOTICE.

PROJECTION

UNLESS OTHERWISE SPECIFIED DIMENSIONS ARE IN INCHES, TOLERANCES FOR ROUGH AND CLEAR OPENING ± .125 INCH. ALL OTHERS ARE:

.X	.XX	.XXX	ANGLES
±.1	±.03	±.010	±2°

DO NOT SCALE DRAWING

<b>FREEMAN</b> MARINE EQUIPMENT, INC.		28336 HUNTER CREEK ROAD GOLD BEACH, OR 97444 U.S.A. PHONE: 541-247-7078 FAX: 541-247-2114 www.freemanmarine.com	
CONFIDENTIAL PROPERTY OF FREEMAN MARINE EQUIPMENT, INC. UNAUTHORIZED USE, REPRODUCTION OR DISTRIBUTION IS STRICTLY PROHIBITED. ALL RIGHTS RESERVED 2012. FREEMAN MARINE EQUIPMENT, INC.		CLIENT: <b>FREEMAN MARINE</b>	
DRAWN: S SYNDER DATE: 7 OCT 08 CHECKED: P. CANCELLIERI DATE: 10DEC09 ENGR: DATE: DESIGN ACTIVITY: DATE:		TITLE: <b>MODLE 2495, QUICK ACTING HATCH 2424K YOKE HINGED</b>	
<b>D</b>	CAGE CODE <b>64747</b>	DRAWING NUMBER <b>2495-0062</b>	REV. -
CONTRACT NO.:	SCALE: 1:2.5	CALC. WT.	ACT. WT.
		SHEET 3 OF 3	