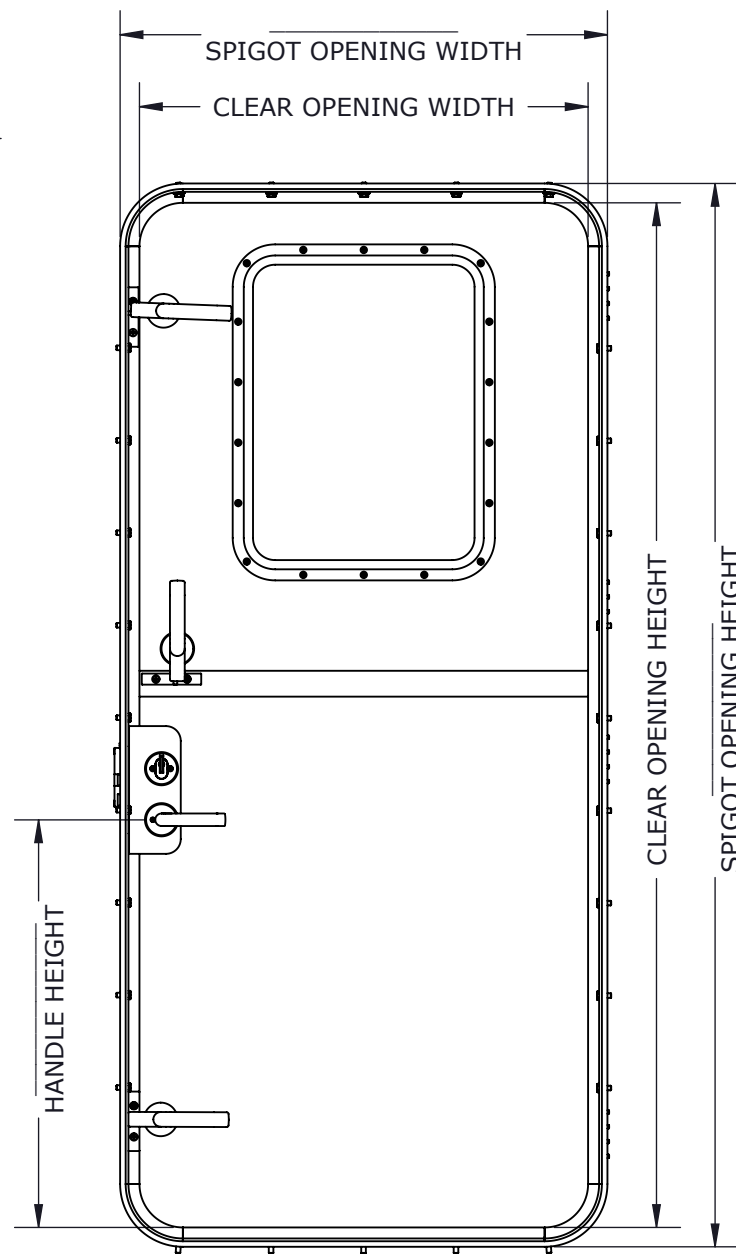
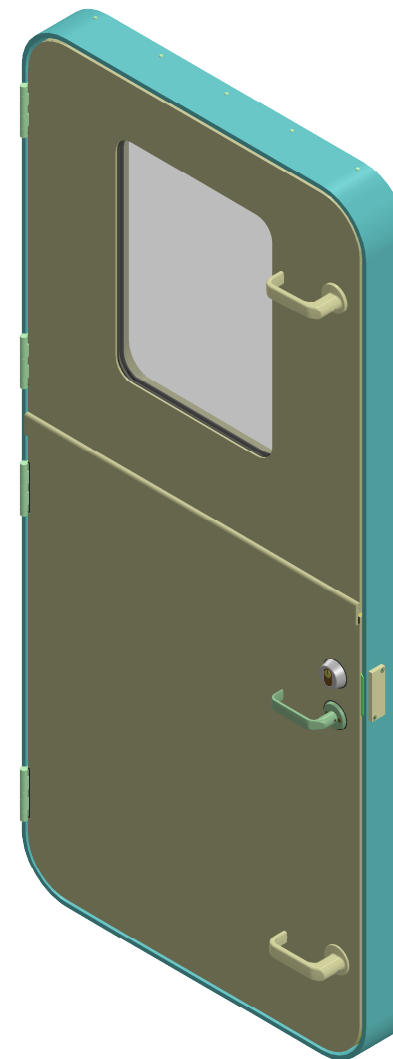


EXTERIOR VIEW

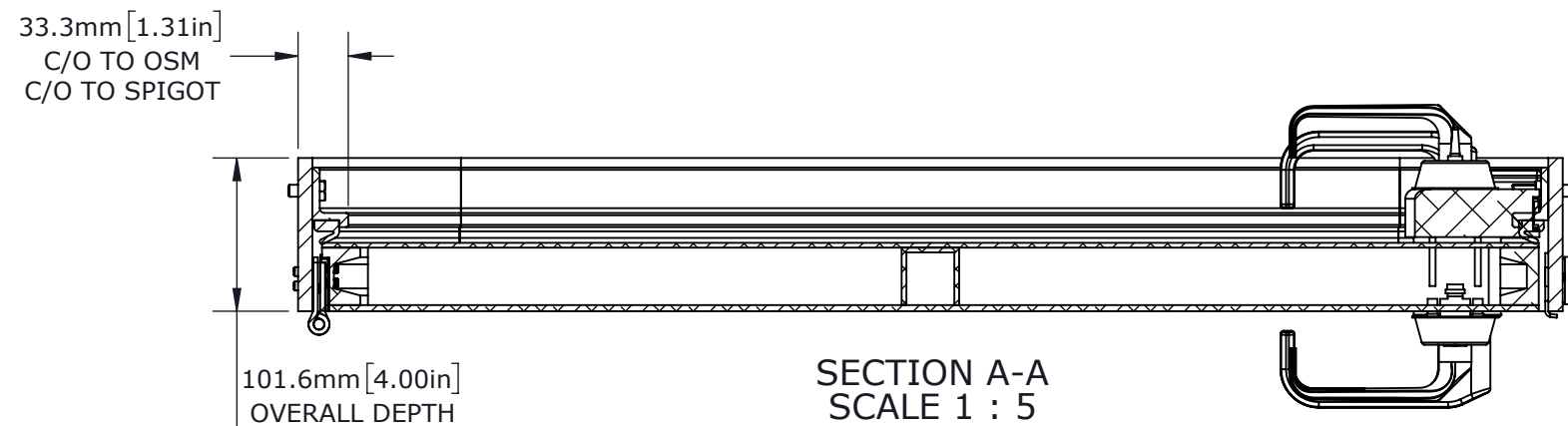


INTERIOR VIEW

OVERALL = SPIGOT OPENING
 CLEAR OPENING = SPIGOT OPENING - 66.6mm[2.62in]
 PLATE CUT = SPIGOT OPENING + 6.35mm[0.25in]

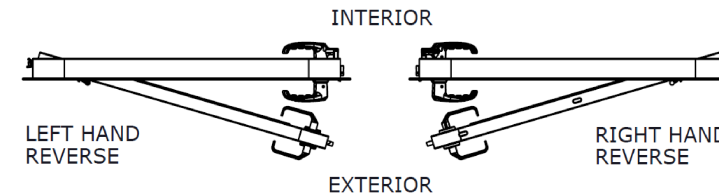
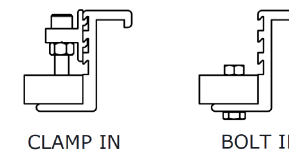


ISOMETRIC VIEW
SCALE 1 : 13



SECTION A-A
SCALE 1 : 5

FRAME STYLES



OPTIONS

HANDING	RIGHT HANDED	
	LEFT HANDED	
LOCK	LOCKING	
	NOT LOCKING	
LOCK MECHANISM	LOCKSET/HANDLE	
	LOCKSET/DEADBOLT	
	PASSAGE SET/HANDLE	
DOG STYLE	ALUMINIUM	
	CONCEALED	
	NYLON	
WINDOW STYLE	STAINLESS STEEL	
	FULL HEIGHT	
	HALF HEIGHT	
	CIRCULAR	
FRAME STYLE	NO PORTLIGHT	
	BOLT IN	
*CORNER TYPE	CLAMP IN	
	MITRED	
	ROUND	

CUSTOMER

ADVANTEC

PROJECT

1523 PCM SALES DRAWING

DESCRIPTION

STANDARD 1523 PCM SERIES MODEL AND DRAWING

CONTACT (604) 607-0091 DATE 10/2/2020



DWG TITLE 1523 SERIES DOOR CAGE CODE

DESCRIPTION Premium Duty, Dutch Leaf, Formed Panel, Steel/Stainless Steel, Weathertight QTY

COPYRIGHT 2020 ADVANTEC GLOBAL INNOVATIONS. ALL RIGHTS RESERVED. CONFIDENTIAL PROPERTY OF ADVANTEC GLOBAL INNOVATIONS. UNAUTHORIZED USE, REPRODUCTION OR DISTRIBUTION IS STRICTLY PROHIBITED. COPIES REMAIN THE PROPERTY OF ADVANTEC GLOBAL INNOVATIONS AND MUST BE RETURNED UPON REQUEST.

SCALE 1:13	DRAWN SP	DATE 10/2/2020	CHECKED	DATE	SIZE B
S.O. NO	DWG NO 1523-1 PCM Sales	SHEET 1 of 1	REV 00		