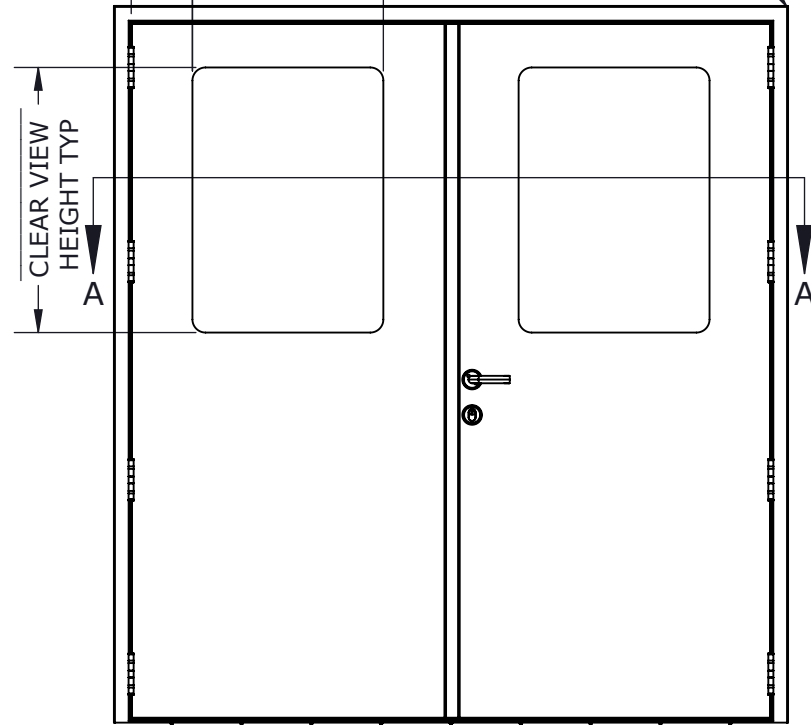


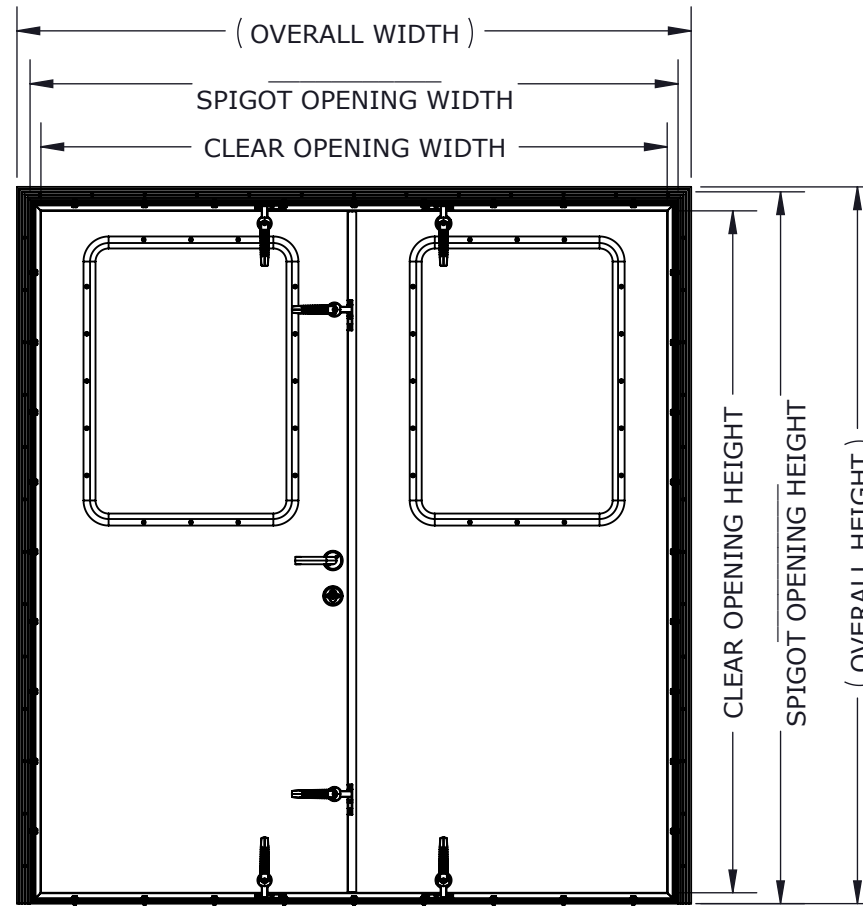
178.2mm [7.01in]  
MIN GLASS  
CLEARANCE  
TYP

CLEAR VIEW  
WIDTH TYP

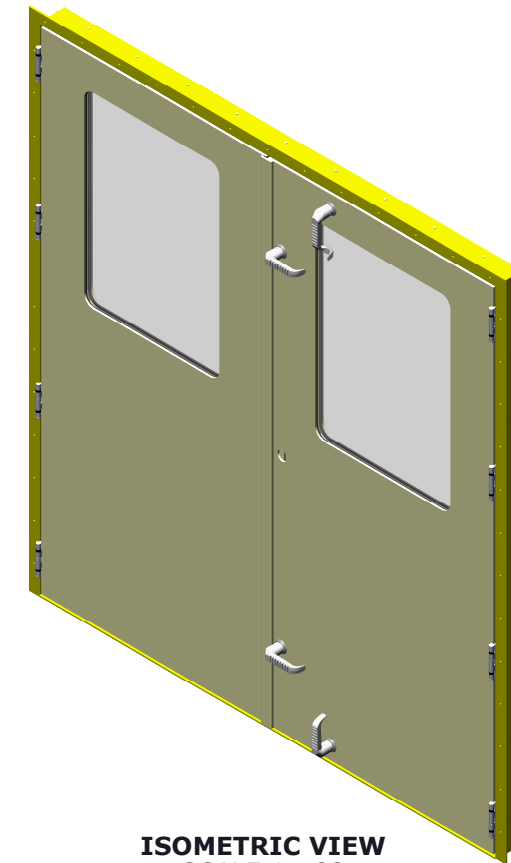
MITERED CORNER  
\*ROUND CORNER WITH  
STANDARD RADIUS  
AVAILABLE



EXTERIOR VIEW



INTERIOR VIEW



ISOMETRIC VIEW  
SCALE 1 : 22

**OPTIONS**

<b>HANDING</b>	RIGHT HANDED	
	LEFT HANDED	
<b>LOCK</b>	LOCKING	
	NOT LOCKING	
<b>LOCK MECHANISM</b>	LOCKSET/HANDLE	
	LOCKSET/DEADBOLT	
	PASSAGE SET/ HANDLE	
<b>DOG STYLE</b>	ALUMINIUM	
	CONCEALED	
	NYLON	
<b>WINDOW STYLE</b>	FULL HEIGHT	
	HALF HEIGHT	
	CIRCULAR	
	NO PORTLIGHT	
<b>FRAME STYLE</b>	BOLT IN	
	CLAMP IN	
<b>*CORNER TYPE</b>	MITRED	
	ROUND	

**CUSTOMER**

ADVANTEC

**PROJECT**

1620 PCM SALES DRAWING

**DESCRIPTION**

STANDARD 1620 PCM SERIES  
MODEL AND DRAWING

CONTACT (604) 607-0091	DATE 10/2/2020
---------------------------	-------------------



**PACIFIC COAST  
MARINE**

DWG TITLE 1620 SERIES DOOR	CAGE CODE
-------------------------------	-----------

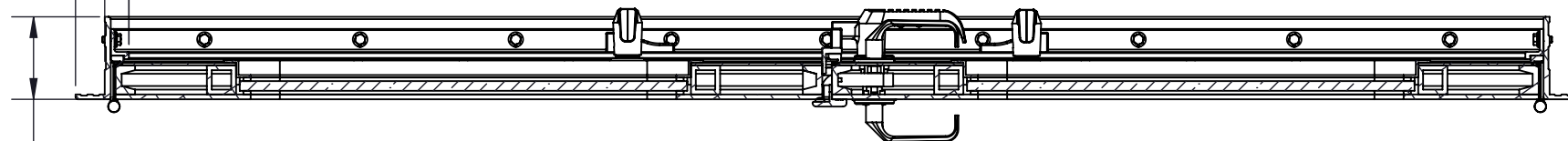
DESCRIPTION Premium Duty, French Leaf, Individual Dog	QTY
---	-----

COPYRIGHT 2020 ADVANTEC GLOBAL INNOVATIONS. ALL RIGHTS RESERVED. CONFIDENTIAL PROPERTY OF ADVANTEC GLOBAL INNOVATIONS. UNAUTHORIZED USE, REPRODUCTION OR DISTRIBUTION IS STRICTLY PROHIBITED. COPIES REMAIN THE PROPERTY OF ADVANTEC GLOBAL INNOVATIONS AND MUST BE RETURNED UPON REQUEST.

SCALE 1:22	DRAWN SP	DATE 10/2/2020	CHECKED	DATE	SIZE B
S.O. NO	DWG NO 1620-1 PCM Sales	SHEET 1 of 1	REV 00		

69.7mm [2.75in]  
C/O TO OSM

31.6mm [1.25in]  
C/O TO SPIGOT



108.0mm [4.25in]  
OVERALL DEPTH

SECTION A-A  
SCALE 1 : 9

**FRAME STYLES**

