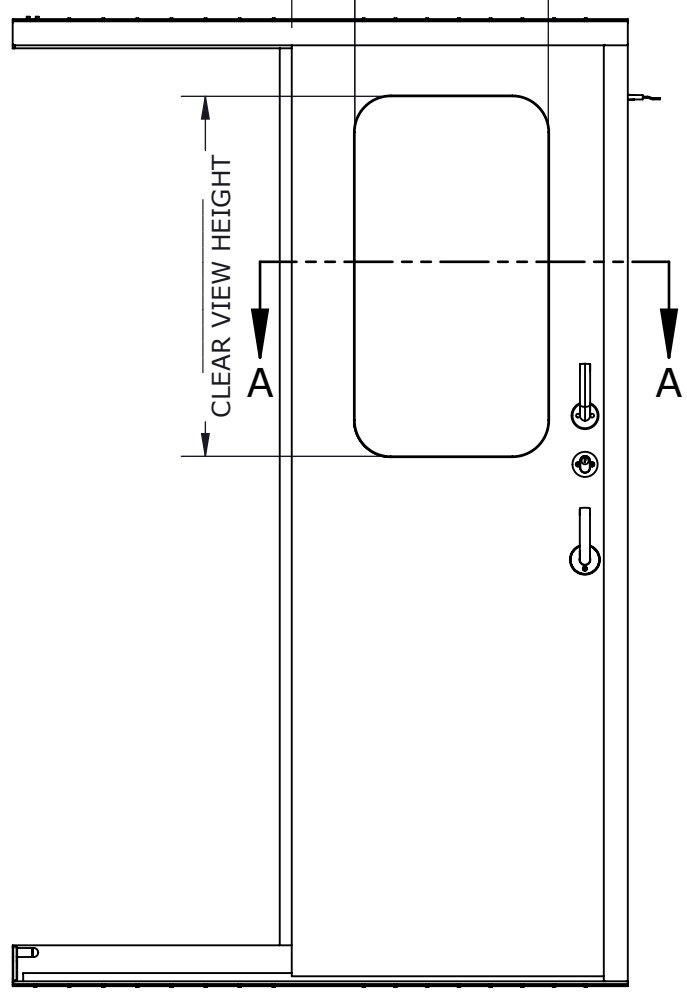
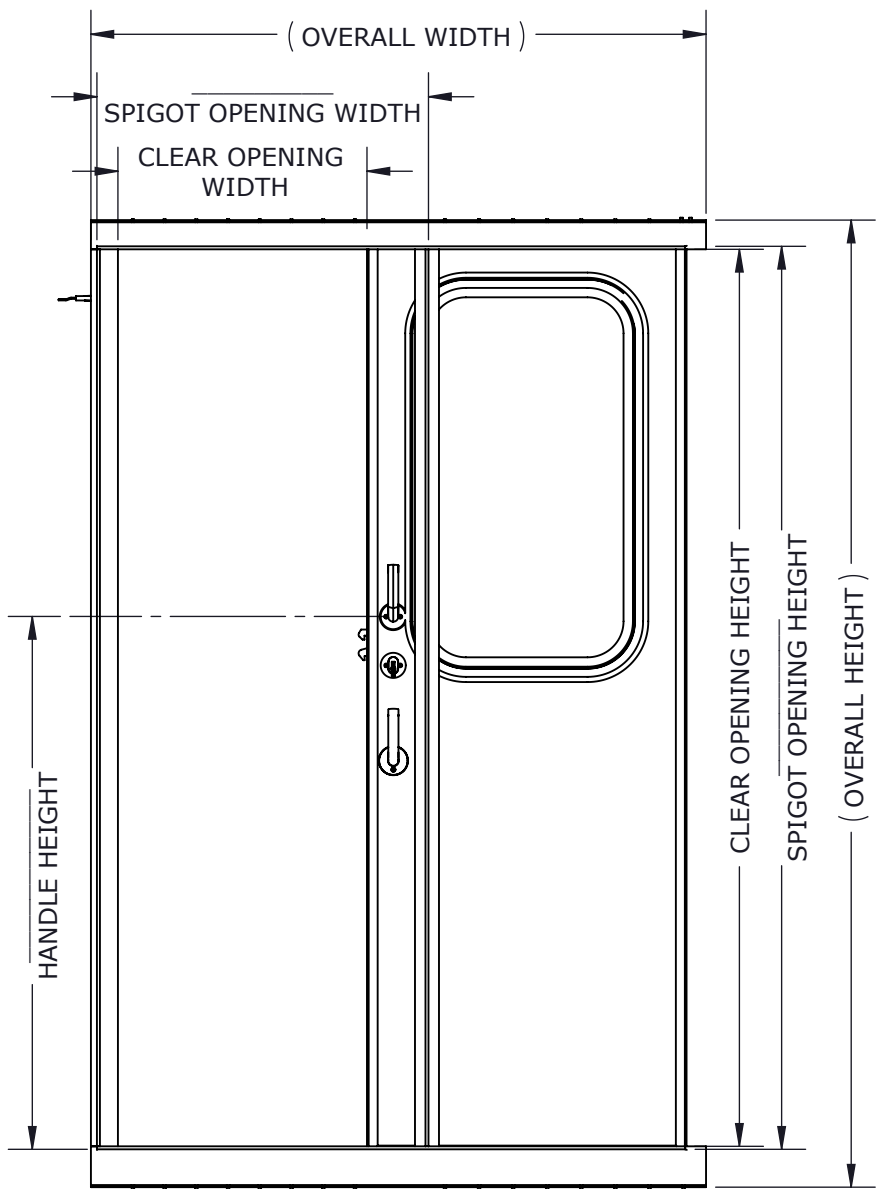


133.4mm [5.25in]
MIN GLASS
CLEARANCE
TYP

CLEAR VIEW WIDTH

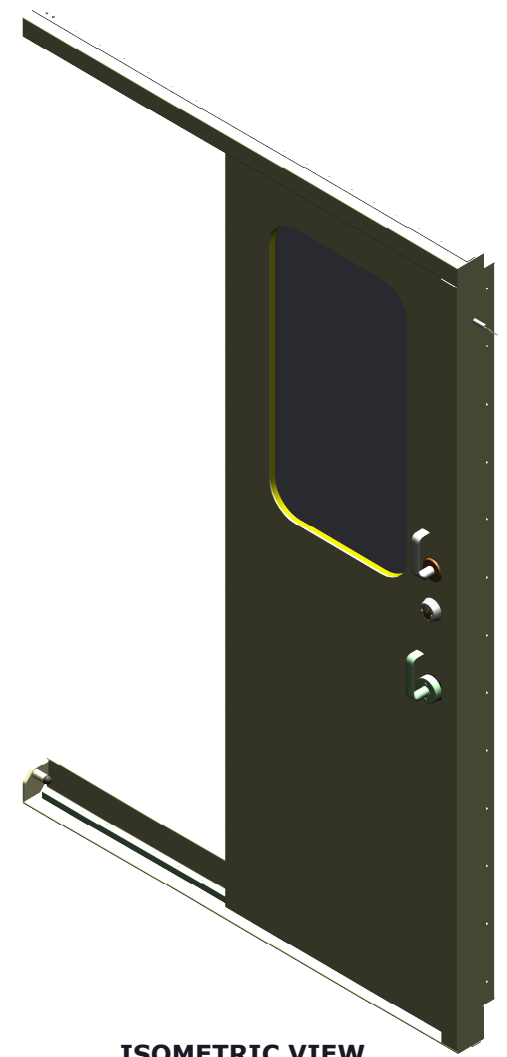


EXTERIOR VIEW (CLOSED)

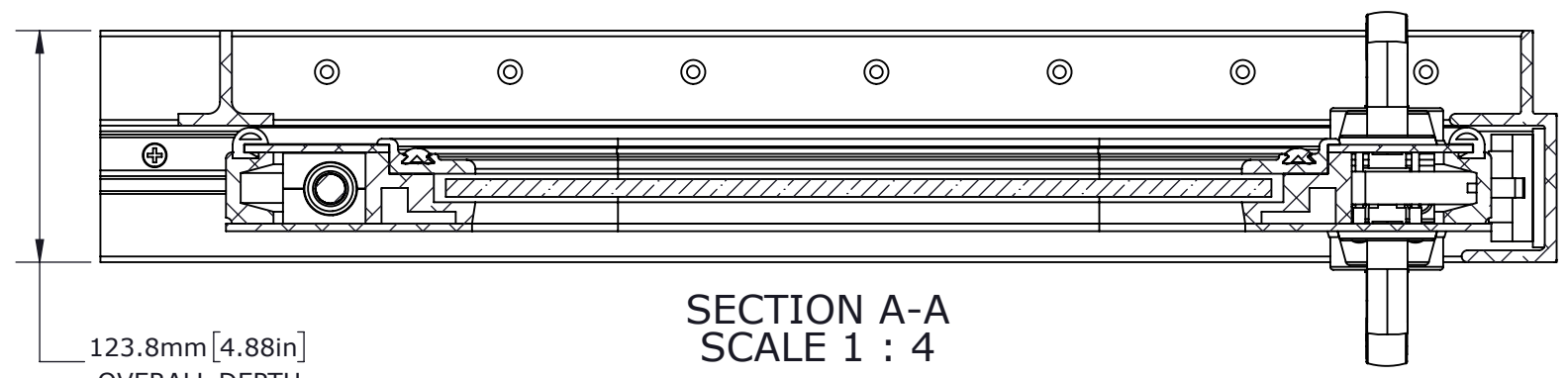


INTERIOR VIEW (OPEN)

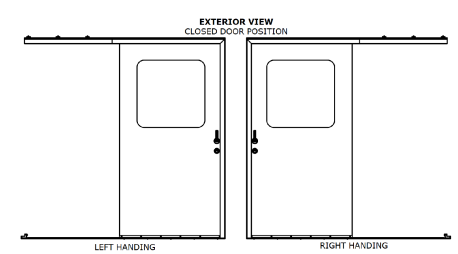
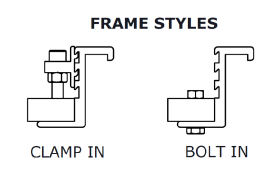
OVERALL = SPIGOT OPENING + 600.2mm[23.63 in]WIDTH/135.6mm[5.34 in]HEIGHT
 CLEAR OPENING = SPIGOT OPENING - 174.5mm[6.87 in]WIDTH/12.7mm[0.5 in]HEIGHT
 PLATE CUT = SPIGOT OPENING + 6.35mm[0.25 in]



ISOMETRIC VIEW
SCALE 1 : 16



SECTION A-A
SCALE 1 : 4



OPTIONS

HANDING	RIGHT HANDED	
	LEFT HANDED	
LOCK	LOCKING	
	NOT LOCKING	
LOCK MECHANISM	LOCKSET/HANDLE	
	LOCKSET/DEADBOLT	
WINDOW STYLE	PASSAGE SET/HANDLE	
	FULL HEIGHT	
	HALF HEIGHT	
	CIRCULAR	
	NO PORTLIGHT	

CUSTOMER

ADVANTEC

PROJECT

1720 FREEMAN SALES DRAWING

DESCRIPTION

STANDARD 1720 FREEMAN SERIES
MODEL AND DRAWING

CONTACT (604) 607-0091	DATE 10/7/2020
---------------------------	-------------------



DWG TITLE 1720 SERIES DOOR	CAGE CODE
-------------------------------	-----------

DESCRIPTION Heavy Duty, Sliding, Dual-Axis, Single Leaf	QTY
---	-----

COPYRIGHT 2020 ADVANTEC GLOBAL INNOVATIONS. ALL RIGHTS RESERVED. CONFIDENTIAL PROPERTY OF ADVANTEC GLOBAL INNOVATIONS. UNAUTHORIZED USE, REPRODUCTION OR DISTRIBUTION IS STRICTLY PROHIBITED. COPIES REMAIN THE PROPERTY OF ADVANTEC GLOBAL INNOVATIONS AND MUST BE RETURNED UPON REQUEST.

SCALE 1:16	DRAWN SP	DATE 10/7/2020	CHECKED	DATE	SIZE B
S.O. NO	DWG NO 1720-1 FME Sales	SHEET 1 of 1	REV 00		