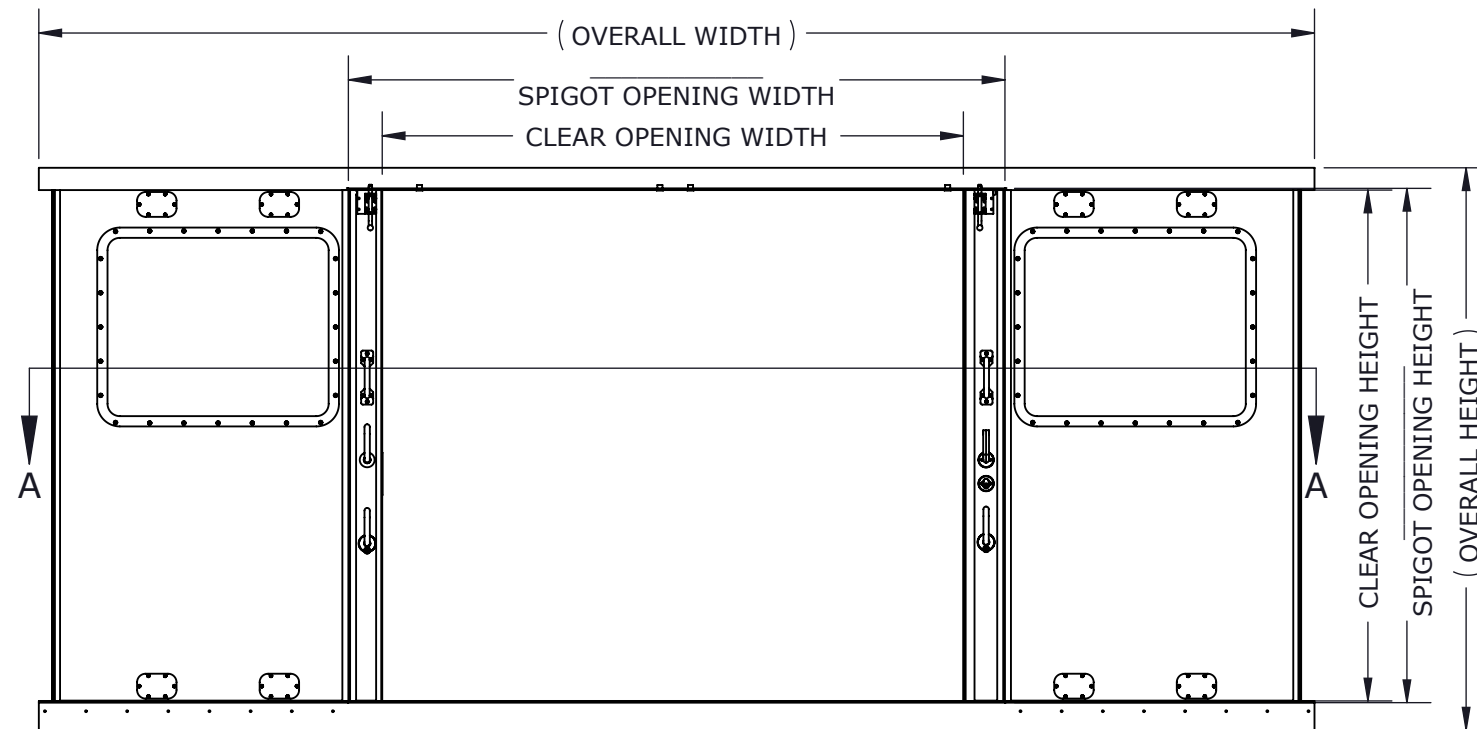
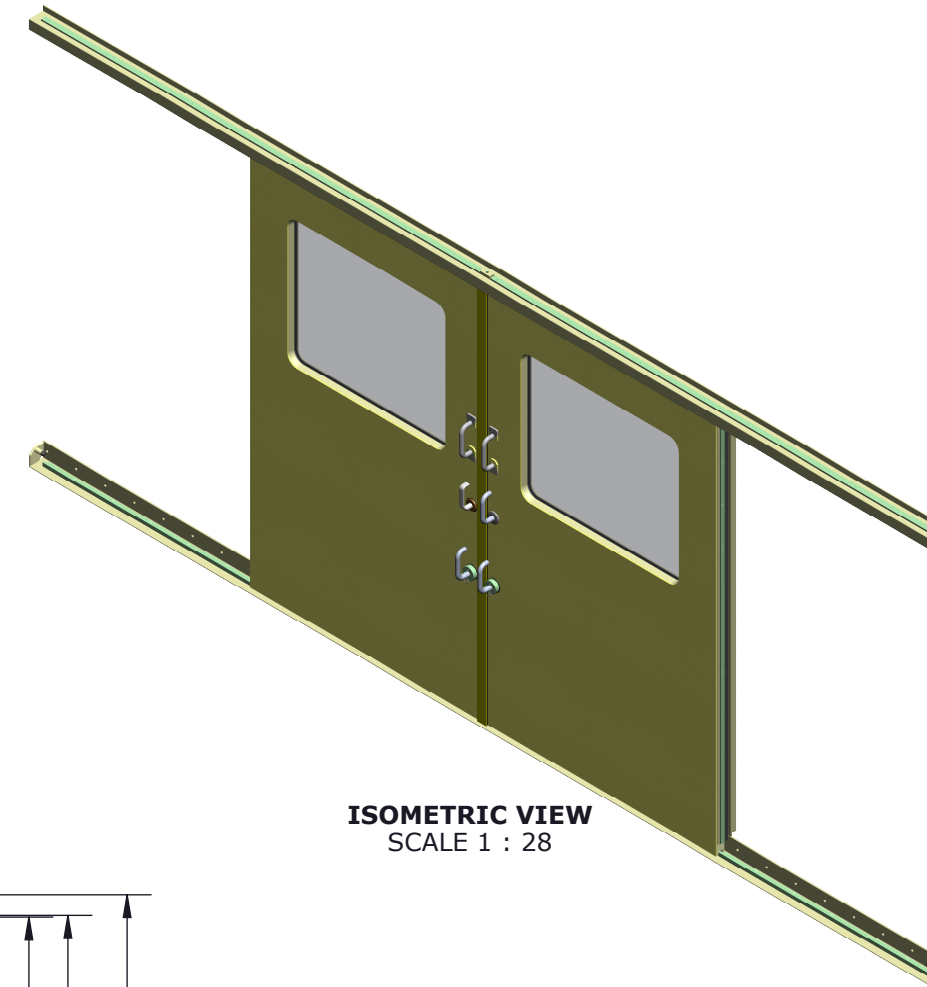


**EXTERIOR VIEW (CLOSED)**

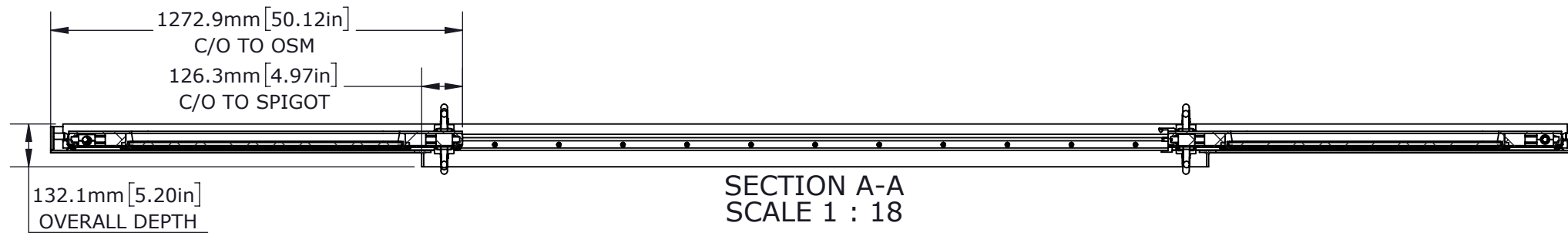


**INTERIOR VIEW (OPEN)**

OVERALL = SPIGOT OPENING + 2293.4mm[90.29in]W/177.8mm[7.00in]H  
 CLEAR OPENING = SPIGOT OPENING - 276.1mm[10.87in]W/12.7mm[0.50in]H  
 PLATE CUT = SPIGOT OPENING + 6.35mm[0.25in]



**ISOMETRIC VIEW**  
SCALE 1 : 28



**SECTION A-A**  
SCALE 1 : 18

**OPTIONS**

<b>LOCK</b>	LOCKING	
	NOT LOCKING	
<b>LOCK MECHANISM</b>	LOCKSET/HANDLE	
	LOCKSET/DEADBOLT	
	PASSAGE SET/HANDLE	
<b>WINDOW STYLE</b>	FULL HEIGHT	
	HALF HEIGHT	
	CIRCULAR	
	NO PORTLIGHT	

**CUSTOMER**

ADVANTEC

**PROJECT**

1726 PCM SALES DRAWING

**DESCRIPTION**

STANDARD 1726 PCM SERIES  
MODEL AND DRAWING

CONTACT	DATE
(604) 607-0091	10/5/2020



**PACIFIC COAST  
MARINE**

DWG TITLE	CAGE CODE
1726 SERIES DOOR	

DESCRIPTION	QTY
Premium Duty, Sliding, Dual-Axis, Double Leaf	

COPYRIGHT 2020 ADVANTEC GLOBAL INNOVATIONS. ALL RIGHTS RESERVED. CONFIDENTIAL PROPERTY OF ADVANTEC GLOBAL INNOVATIONS. UNAUTHORIZED USE, REPRODUCTION OR DISTRIBUTION IS STRICTLY PROHIBITED. COPIES REMAIN THE PROPERTY OF ADVANTEC GLOBAL INNOVATIONS AND MUST BE RETURNED UPON REQUEST.

SCALE	DRAWN	DATE	CHECKED	DATE	SIZE
1:28	SP	10/5/2020			B
S.O. NO	DWG NO	SHEET	REV		
	1726-1 PCM Sales	1 of 1	00		