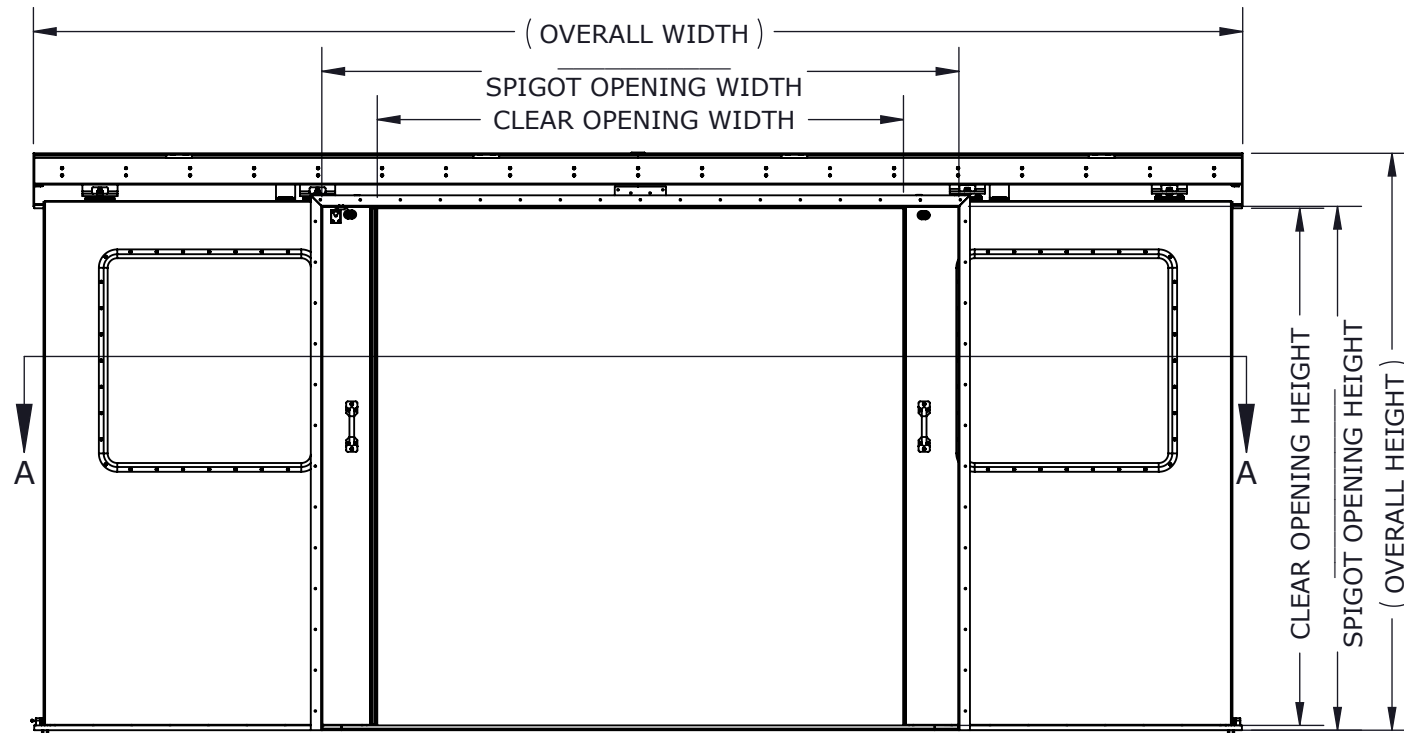
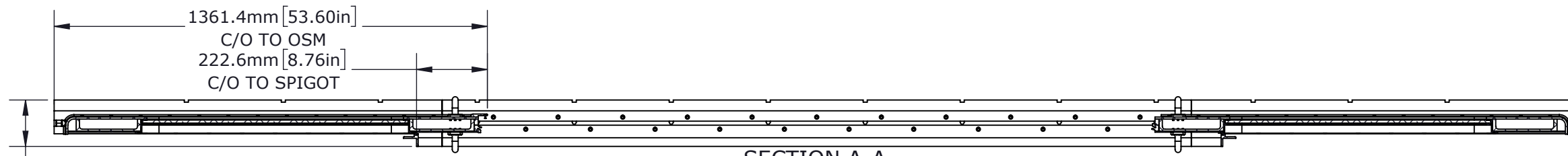


**EXTERIOR VIEW (CLOSED)**

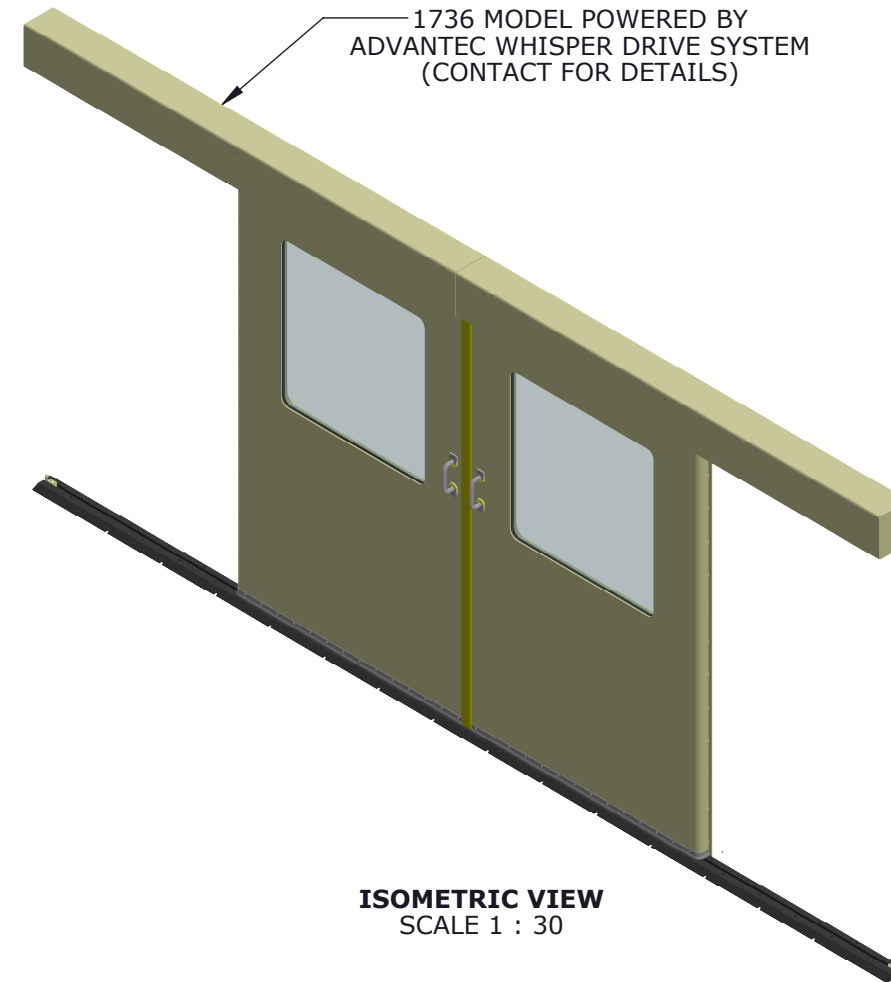


**INTERIOR VIEW (OPEN)**

OVERALL = SPIGOT OPENING + 2270.8mm[89.40in]WIDTH/210.6mm[8.29in]HEIGHT  
 CLEAR OPENING = SPIGOT OPENING - 440.2mm[17.33in]WIDTH/26.7mm[1.05in]HEIGHT  
 PLATE CUT = SPIGOT OPENING + 6.35mm[0.25in]



**SECTION A-A  
SCALE 1 : 16**



**ISOMETRIC VIEW  
SCALE 1 : 30**

**OPTIONS**

<b>LOCK</b>	LOCKING	
	NOT LOCKING	
<b>LOCK MECHANISM</b>	LOCKSET/HANDLE	
	LOCKSET/DEADBOLT	
	PASSAGE SET/HANDLE	
<b>WINDOW STYLE</b>	FULL HEIGHT	
	HALF HEIGHT	
	CIRCULAR	
	NO PORTLIGHT	

**CUSTOMER**

ADVANTEC

**PROJECT**

1736 FREEMAN SALES DRAWING

**DESCRIPTION**

STANDARD 1736 FREEMAN SERIES MODEL AND DRAWING

CONTACT	DATE
(604) 607-0091	10/8/2020



DWG TITLE	CAGE CODE
1736 SERIES DOOR	

DESCRIPTION	QTY
Heavy Duty, Top-Hung Slider, Multi Active Panels - Manual or Automatic	

COPYRIGHT 2020 ADVANTEC GLOBAL INNOVATIONS. ALL RIGHTS RESERVED. CONFIDENTIAL PROPERTY OF ADVANTEC GLOBAL INNOVATIONS. UNAUTHORIZED USE, REPRODUCTION OR DISTRIBUTION IS STRICTLY PROHIBITED. COPIES REMAIN THE PROPERTY OF ADVANTEC GLOBAL INNOVATIONS AND MUST BE RETURNED UPON REQUEST.

SCALE	DRAWN	DATE	CHECKED	DATE	SIZE
1:30	SP	10/8/2020			B
S.O. NO	DWG NO	SHEET	REV		
	1736-1 FME Sales	1 of 1	00		