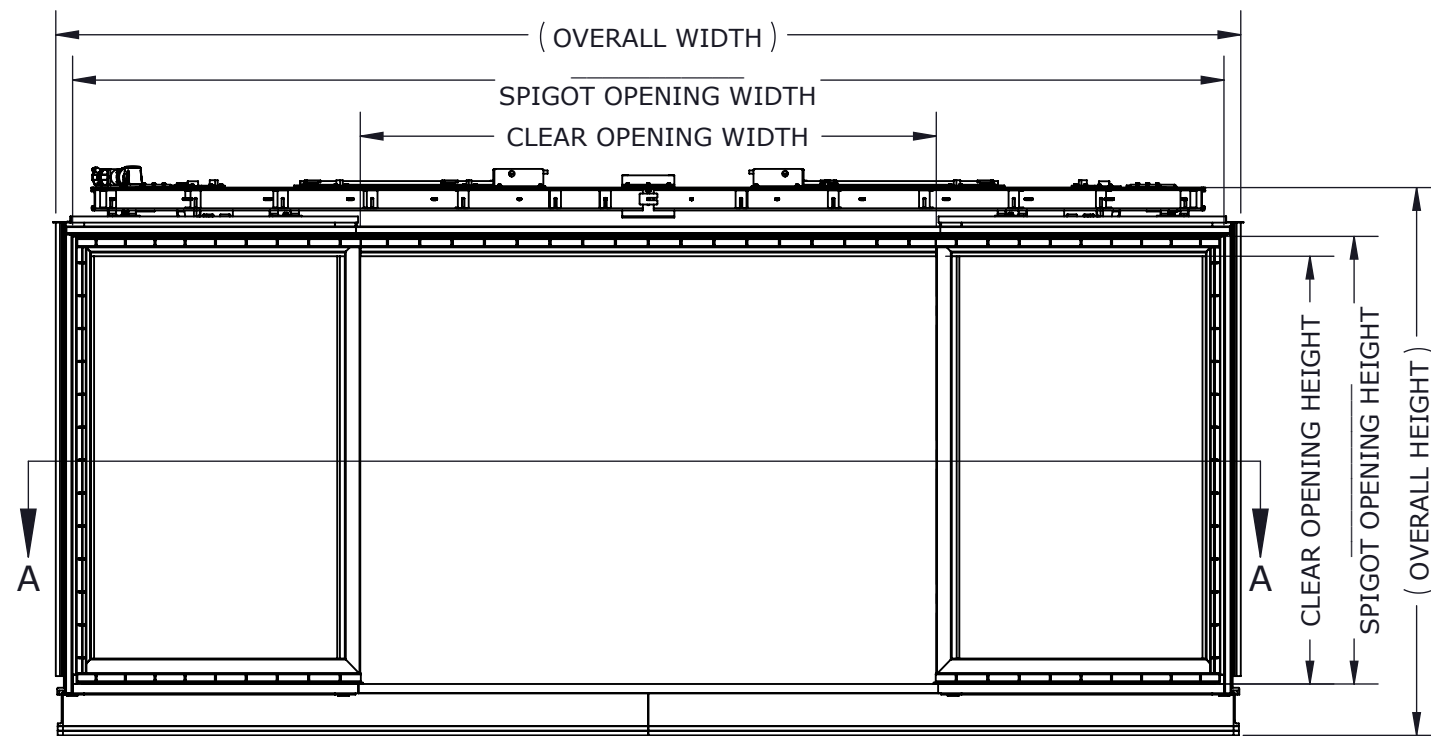
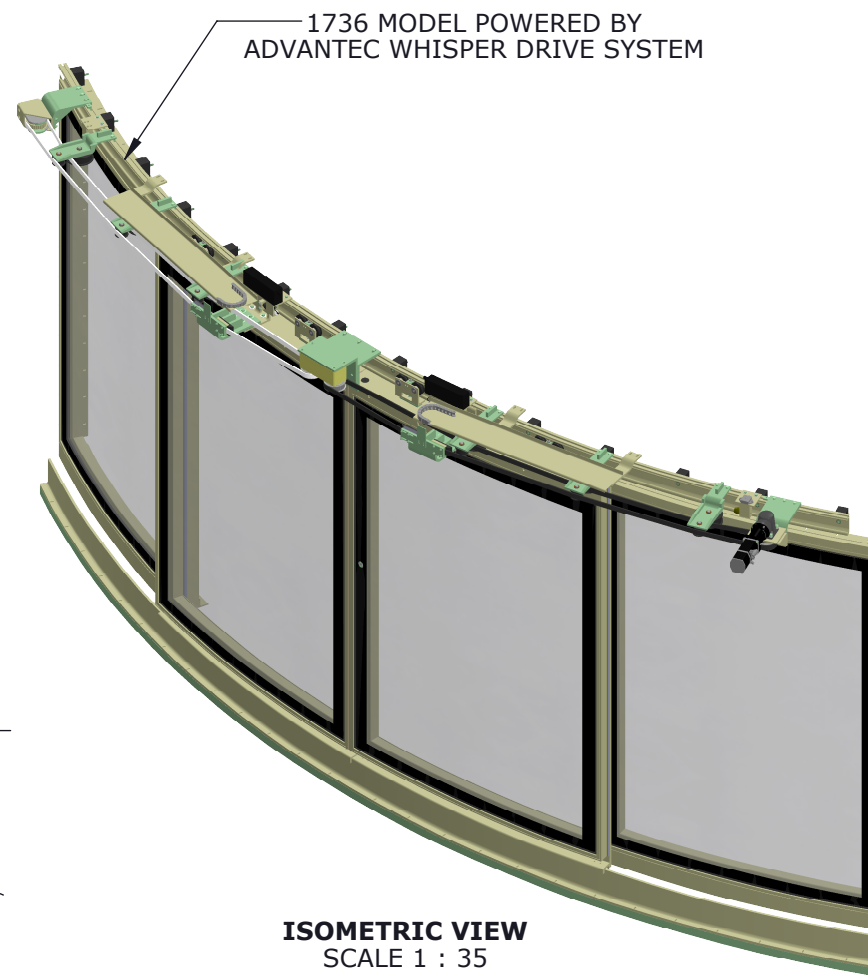


EXTERIOR VIEW

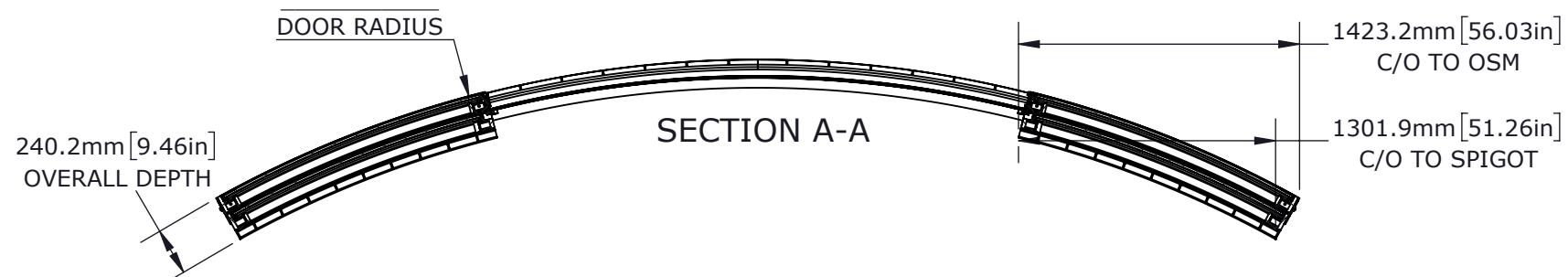


INTERIOR VIEW

OVERALL = SPIGOT OPENING + 155.7mm[6.13in]WIDTH/464.1mm[18.27in]HEIGHT
 CLEAR OPENING = SPIGOT OPENING - 2664.0mm[104.9in]WIDTH/91.9mm[3.62in]HEIGHT
 PLATE CUT = SPIGOT OPENING + 6.35mm[0.25in]



ISOMETRIC VIEW
SCALE 1 : 35



SECTION A-A

OPTIONS

LOCK	LOCKING	
	NOT LOCKING	
LOCK MECHANISM	LOCKSET/HANDLE	
	LOCKSET/DEADBOLT	
	PASSAGE SET/HANDLE	
WINDOW STYLE	FULL HEIGHT	
	HALF HEIGHT	
	CIRCULAR	
	NO PORTLIGHT	

WHISPER DRIVE SYSTEM

SAFETY	EYE BEAMS & PINCH SENSORS
PUSH BUTTONS	PIEZO LED (1-SET)
TOUCH SCREEN	DISPLAY (4) PRESET MODES
GEAR BOX	GEAR RATIO VARIES PER SYSTEM
CONTROL BOX SIZE [mm]	420W X 356L X 165H
JUNCTION BOX SIZE [mm]	420W X 356L X 165H
MAX DISTANCE	JUNCTION BOX TO MOTOR 2.5m JUNCTION BOX TO CONTROL BOX 5m
BACK-UP	BATTERY (10) FULL CYCLES
DRIVE TYPE	BELT DRIVE
SECURITY	PIN LOCK

CUSTOMER

ADVANTEC

PROJECT

1736 PCM SALES DRAWING

DESCRIPTION

STANDARD 1736 PCM SERIES
MODEL AND DRAWING

CONTACT	(604) 607-0091	DATE	10/8/2020
---------	----------------	------	-----------



PACIFIC COAST MARINE

DWG TITLE	1736 SERIES DOOR	CAGE CODE	
-----------	------------------	-----------	--

DESCRIPTION	Premium Duty, Sliding, Top-Hung Multi Active Panel Aluminum - Manual or Automatic	QTY	
-------------	---	-----	--

COPYRIGHT 2020 ADVANTEC GLOBAL INNOVATIONS. ALL RIGHTS RESERVED. CONFIDENTIAL PROPERTY OF ADVANTEC GLOBAL INNOVATIONS. UNAUTHORIZED USE, REPRODUCTION OR DISTRIBUTION IS STRICTLY PROHIBITED. COPIES REMAIN THE PROPERTY OF ADVANTEC GLOBAL INNOVATIONS AND MUST BE RETURNED UPON REQUEST.

SCALE	DRAWN	DATE	CHECKED	DATE	SIZE
1:35	SP	10/8/2020			B
S.O. NO	DWG NO	SHEET	REV		
	1736-1 PCM Sales	1 of 1	00		