

EXTERIOR VIEW

KEY PLAN
UPWARD OPENING
SPRING ASSISTED

INTERIOR VIEW

7. THIS DRAWING PROVIDES THE GENERAL CONFIGURATION OF A RAISED HATCH FOR MORE DETAILED INFORMATION, CONTACT FREEMAN MARINE SALES.

6. FINISH - PER SALES ORDER SPECIFICATION SHEET

5. RADIUS CORNER PANEL.

4. WEATHERTIGHT CONSTRUCTION.

3. PANEL SKIN THICKNESS AS DESCRIBED IN CONFIGURATION DETAIL.

2. DOOR SIZE/STYLE AS REQUIRED.

1. UPWAARD OPENING, SPRING ASSISTED, PER FREEMAN STANDARD.

NOTES: UNLESS OTHERWISE SPECIFIED.

A

CUSTOMER APPROVAL

Signature: _____
Date: _____

IMPORTANT! THIS DRAWING SUPERSEDES ALL OTHER DOCUMENTS. By signing this approval you accept and agree that the dimensions and details shown are correct and properly fit your application, regardless of any differences between this drawing and any contract specifications. Should you see any errors in the drawing, or have any questions, please contact your Freeman Marine sales engineer for clarification.

REV.	DESCRIPTION:	DATE:	DRAWN
01	INITIAL RELEASE	10OCT13	SMM

SPECIFICATIONS SUBJECT TO CHANGE WITHOUT NOTICE.

PROJECTION

UNLESS OTHERWISE SPECIFIED DIMENSIONS ARE IN INCHES, TOLERANCES FOR ROUGH AND CLEAR OPENING ± .125 INCH. ALL OTHERS ARE:

.X	.XX	.XXX	ANGLES
±.1	±.03	±.010	±2°

DO NOT SCALE DRAWING

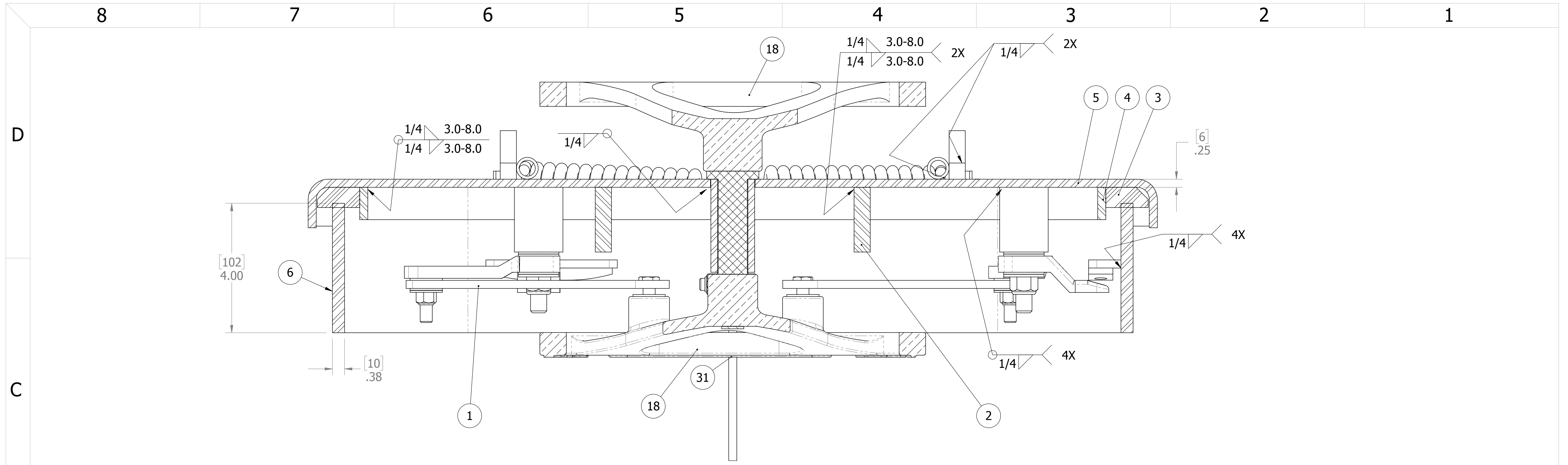
FREEMAN MARINE EQUIPMENT, INC.

28336 HUNTER CREEK ROAD
GOLD BEACH, OR 97444 U.S.A.
PHONE: 541-247-7078 FAX: 541-247-2114
www.freemanmarine.com

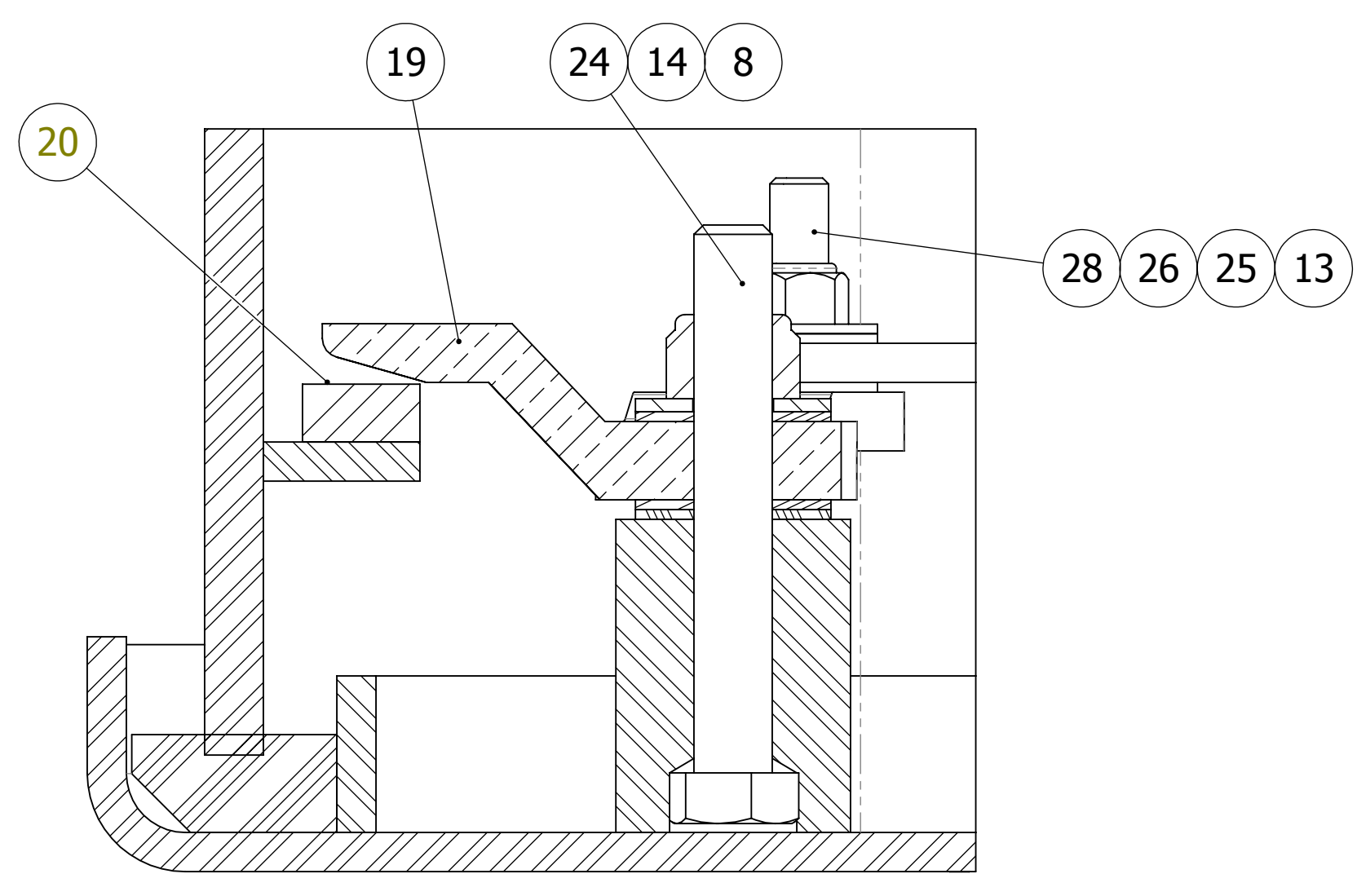
CONFIDENTIAL PROPERTY OF FREEMAN MARINE EQUIPMENT, INC. UNAUTHORIZED USE, REPRODUCTION OR DISTRIBUTION IS STRICTLY PROHIBITED. ALL CODES REMAIN THE PROPERTY OF FREEMAN MARINE EQUIPMENT, INC. AND MUST BE RETURNED UPON REQUEST.
© ALL RIGHTS RESERVED 2012, FREEMAN MARINE EQUIPMENT, INC.

DRAWN: S MILLER
CHECKED: Z CARPENTER
ENGR:
DESIGN ACTIVITY:
CONTRACT NO.:

CLIENT:		MODEL - H70R, ENGINE ROOM HATCH		
DATE: 10OCT13	DATE: 10OCT13	SIZE: D	CAGE CODE: 64747	DRAWING NUMBER: P0004253-002
DATE:	DATE:	SCALE: 1:4	CALC. WT.	ACT. WT.
REV. 01	SHEET 1 OF 2			



SECTION A-A



SECTION B-B
SCALE 1 : 1

ITEM NO.	QTY.	PART NUMBER	DESCRIPTION	MATERIAL
31	1	0423-2398	HOLD BACK HOOK SET	STEEL, A36
30	1	0431-2233	SPRING, .38IN DIA TORSION	STAINLESS STEEL
29	1	0431-2232	SPRING .38IN. DIA TORSION	SS 302 A313
28	4	0411-2053	SCREW, HEX HEAD CAP, 3/8-16x1-1/2	SS EP
27	4	0411-2693	WASHER, FLAT	316/316L STAINLESS STEEL
26	4	0411-2032	NUT .375IN NYLOCK	316/316L
25	4	0411-2101	WASHER, FLAT .406 X 1 X .05IN	SS 316/316L
24	4	0411-2238	SCREW, HH .5-13X3.5IN SS 316	STAINLESS STEEL, 316
23	2	0716-2021	SPRING CLIP	1/4, A36 (0715-2006)
22	4	0231-2557	STRIKER WEDGE TAB	A36
21	8	0411-3107	SCREW, PH P 10-24X.375IN SS 316	316 SS
20	4	0231-2086	QUICK ACTING DOG WEDGE	GLASS FILLED NYLON
19	4	0223-2008	DOG, BRONZE LEVER SINGLE LH QA	BRONZE
18	1	0243-1001	HANDWHEEL ASSEMBLY, BZ WH/BZ WH, MS CVR, TALL	BRONZE
17	4	0411-2027	NUT .50IN-13 SS 316 NYLOCK	SS 316/316L
16	2	0411-2896	COTTER PIN	STAINLESS STEEL
15	2	0411-3083	WASHER FLAT .625IN SS 18-8 SAE	SS 303 (18-8) ANLD
14	12	0413-2012	WASHER, .525X 1.25X.062	NYLON
13	8	0413-2113	WASHER, 3/8 X 7/8 NYLON	NYLON
12	3	0462-2581	HINGE BLADE	A36 (0715-2028)
11	1	0462-2584	HINGE BRACKET, RH	1/2, A36 (0715-2028)
10	1	0462-2609	HINGE BRACKET, LH	1/2, A36 (0715-2028)
9	2	0615-9593	PIPE, 3/8 SCH 40, 6061-T6	A36 (0615-9593)
8	4	0616-2047	LUG, 1 1/2" OD X 1/2" HOLE X 2"	STEEL
7	1	P0003817-001-106	ROD, HINGE,	BAR, ROUND, 5/8x8in, 316 S/S (0613-9507)
6	1	H-70RS-24-101	COAMING, (0615-9564)	BAR, FLAT, 3/8 X 6 A36 HR STEEL
5	1	H-70RS-24-201	PANEL, (0715-2020)	PLATE, .250 A36 STEEL, ABS CERT, GRAY
4	1	H-70RS-24-202	HATCH RING, (0615-9511)	BAR, FLAT, 1/4 X 1 A36 HR STEEL
3	1	H-70RS-24-203	GASKET, STANDARD, (0631-9920)	GASKET, STANDARD 5/8 X 1-3/8, GKTX050
2	2	H-70RS-24-204	STIFFNER, (0615-9578)	BAR, FLAT, 1/2X2 A36 HR STEEL
1	4	H-70RS-24-205	LINKAGE, (0713-2023)	1/4, 304L S/S

A

CUSTOMER APPROVAL

Signature: _____
Date: _____

IMPORTANT! THIS DRAWING SUPERSEDES ALL OTHER DOCUMENTS. By signing this approval you accept and agree that the dimensions and details shown are correct and properly fit your application, regardless of any differences between this drawing and any contract specifications. Should you see any errors in the drawing, or have any questions, please contact your Freeman Marine sales engineer for clarification.

REV.	DESCRIPTION	DATE	DRAWN
01	INITIAL RELEASE	10OCT13	SMM

SPECIFICATIONS SUBJECT TO CHANGE WITHOUT NOTICE.



UNLESS OTHERWISE SPECIFIED DIMENSIONS ARE IN INCHES, TOLERANCES FOR ROUGH AND CLEAR OPENING ± .125 INCH. ALL OTHERS ARE:

.X	.XX	.XXX	ANGLES
±.1	±.03	±.010	±2°

DO NOT SCALE DRAWING



28336 HUNTER CREEK ROAD
GOLD BEACH, OR 97444 U.S.A.
PHONE: 541-247-7078 FAX: 541-247-2114
www.freemanmarine.com

CONFIDENTIAL PROPERTY OF FREEMAN MARINE EQUIPMENT, INC. UNAUTHORIZED USE, REPRODUCTION OR DISTRIBUTION IS STRICTLY PROHIBITED. ALL COPIES REMAIN THE PROPERTY OF FREEMAN MARINE EQUIPMENT, INC. AND MUST BE RETURNED UPON REQUEST.
© ALL RIGHTS RESERVED 2012, FREEMAN MARINE EQUIPMENT, INC.
DRAWN: S MILLER
CHECKED: Z CARPENTER
ENGR:
DESIGN ACTIVITY:
CONTRACT NO.:

CLIENT:	MODEL - H70R, ENGINE ROOM HATCH			
TITLE:	SIZE	CAGE CODE	DRAWING NUMBER	REV.
	D	64747	P0004253-002	01
SCALE: 1:4	CALC. WT.	ACT. WT.	SHEET 2 OF 2	