

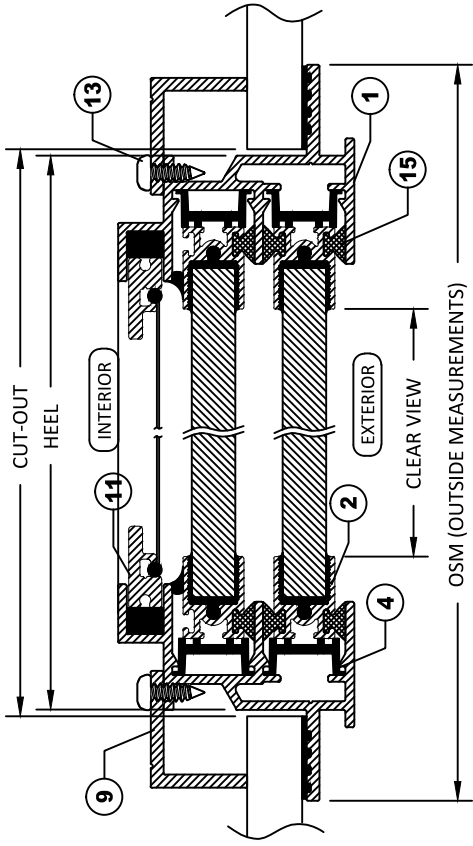
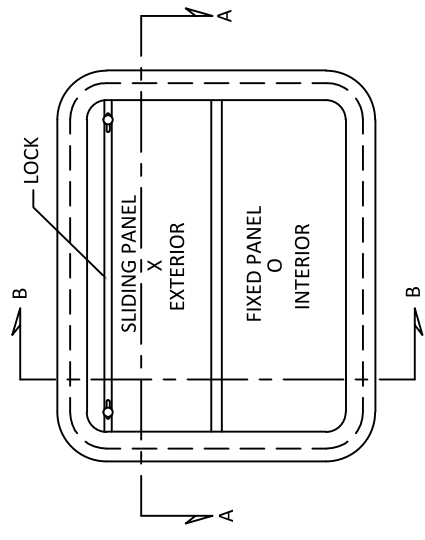
SECTION B-B WITH CLAMP IN INSTALLATION

NOTES:

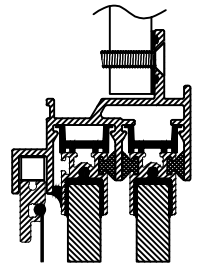
- GENERAL HEEL TOLERANCE $\pm 0/-1/4$ " OVERALL
- AVAILABLE WITH 3"(76MM) RADIUS OR MITERED CORNERS
- STANDARD MOUNTING HOLES ARE 3/16" WITH #10 COUNTERSUNK

ITEMS		DESCRIPTION	MATERIAL	PART NUMBER
1	MOUNTING FRAME	6063 ALUMINUM	6063 ALUMINUM	MT-EX17698
2	VENT	6063 ALUMINUM	6063 ALUMINUM	MT-EX782146
3	T-BAR	6063 ALUMINUM	6063 ALUMINUM	MT-EX780989
4	TRACK	RIGID PVC	RIGID PVC	AD-VY1802
5	GLAZING	GLASS 6mm (1/4") TO 10mm (3/8")	GLASS 6mm (1/4") TO 10mm (3/8")	
6	GLAZING MATERIAL	URETHANE	URETHANE	
7	PLUG/STOP	FLEXIBLE PVC	FLEXIBLE PVC	AD-VY2170BM
8	106 T-BAR FLAP	FLEXIBLE PVC	FLEXIBLE PVC	AD-VY1801A
9	TRIM RING	6063 ALUMINUM	6063 ALUMINUM	
10	BEDDING COMPOUND	CUSTOMER SUPPLY	CUSTOMER SUPPLY	
11	SCREEN (OPTIONAL)	6063 ALUMINUM	6063 ALUMINUM	
12	MULTI LOCK	6063 ALUMINUM	6063 ALUMINUM	
13	TRIM SCREWS	S.S.	S.S.	
14	T-BAR WEATHER STRIP W/ FIN	HAIR	HAIR	AD - WS187_8335D5
15	WEATHER STRIP W/O FIN	HAIR	HAIR	AD - WS270_753Z

STANDARD DIMENSIONS		DESCRIPTION	DIMENSION
A	FLANGE COVERAGE	FLANGE COVERAGE	21mm (13/16")
B	EXTERIOR PROTRUSION	EXTERIOR PROTRUSION	11mm (7/16")
C	INTERIOR PROTRUSION	INTERIOR PROTRUSION	44mm (1 11/16")
D	SPIGOT TO CLEARVIEW	SPIGOT TO CLEARVIEW	35mm (1 3/8")
E	FLANGE THICKNESS	FLANGE THICKNESS	3mm (1/8")



SECTION A-A WITH CLAMP IN INSTALLATION



OPTIONAL BOLT-ON INSTALLATION

DRAWING NUMBER

106HD

SCALE

BY NTS LD

DIAMOND SEA GLAZE MANUFACTURING LTD.
26995 GLOUCESTER WAY, LANGLEY B.C.
CANADA V4W 3Y3
TOLL FREE: 1-800-770-0455
PHONE: 604-607-0091
FAX: 604-607-0092



ITEM NAME

106HD

REVISION

1

ITEM DESCRIPTION

SLIDING OPENING WINDOW